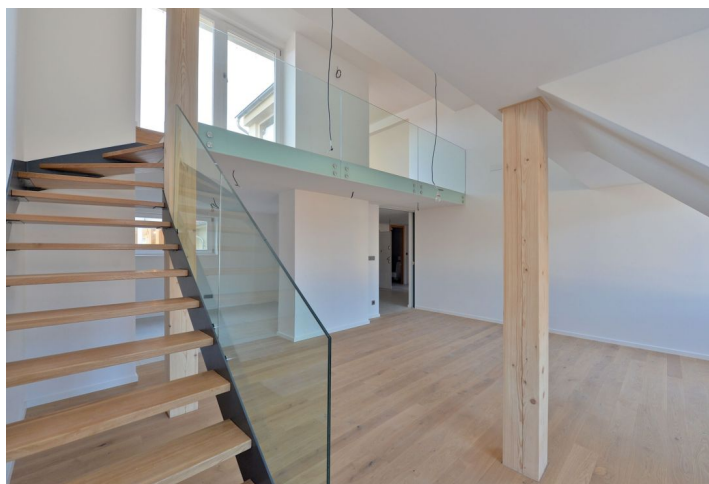
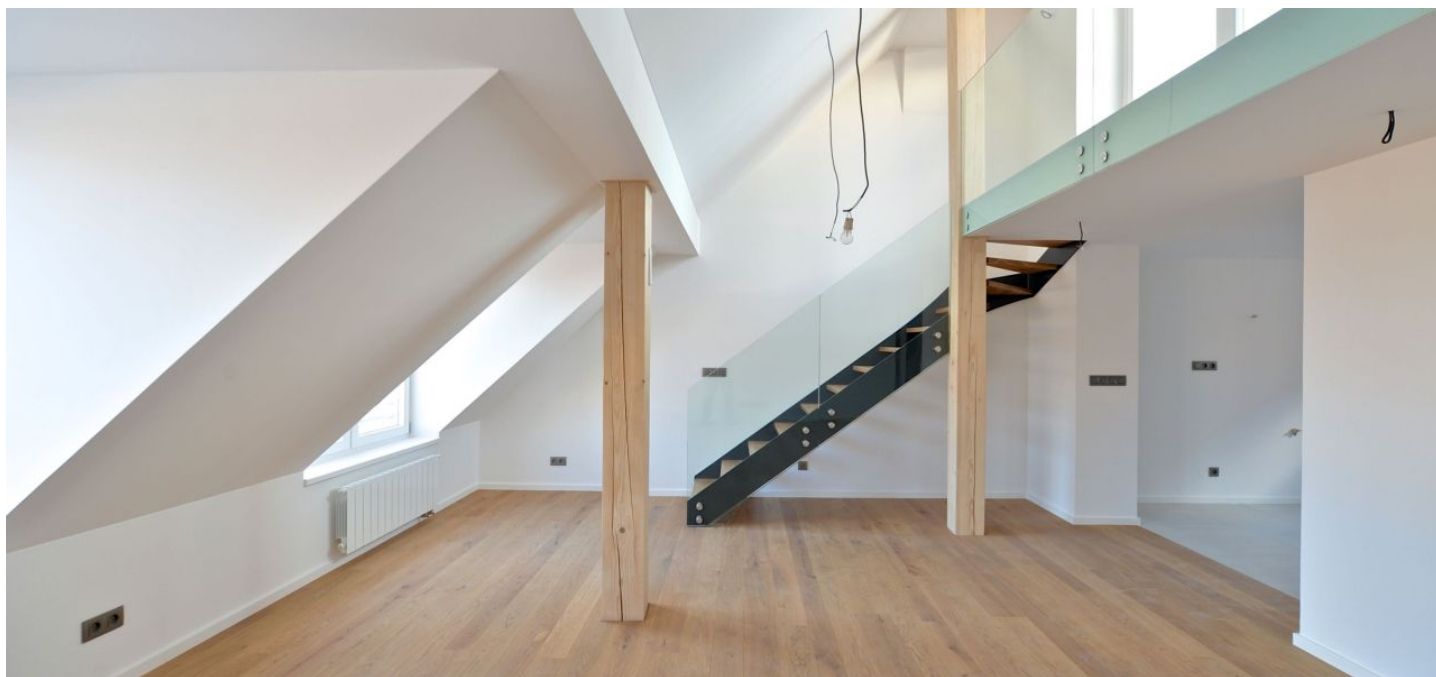




Apartment Two-bedroom (3+1)

Sold

115 m², Praha 7, Holešovice, Tusarova





Apartment Two-bedroom (3+1)

Sold115 m², Praha 7, Holešovice, Tusarova

Total area	130 m ²
Floor area*	115 m ²
Terrace	15 m ²
Parking	-
Cellar	Yes
PENB	G
Reference number	20180

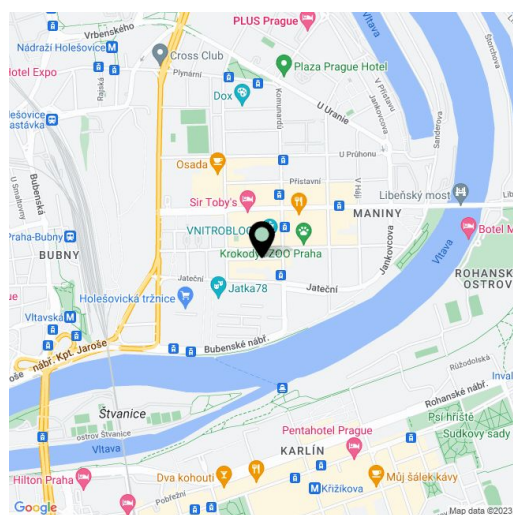
New split-level attic flat with a terrace on the 6th floor of a reconstructed apartment building with a lift, situated in a dynamically developing part of Prague 7 - Holešovice, right in front of a park, only a few steps from a tram stop and 5 minutes to metro Vltavská.

The layout of the lower level consists of a large entrance hall, open-plan living room with dining area, kitchen, 2 bedrooms, bathroom, storage room, and a separate toilet. The stairs from the living room lead to the gallery in the upper level, with plenty of room for work space, and a terrace.

Oak floorboards, Ragno Concept floor and wall tiles, **large format windows**, Laufen bathroom fittings, preparation for kitchen. The purchase price includes a **cellar**.

The house is situated in an **attractive location near the riverbank**, in the vicinity of the Rock Opera theater, a kindergarten, school, supermarket, sports and medical facilities and restaurants. 5 minutes to the fitness club or a squash hall, 10 minutes to CZ Golf golf course in Libeň, 10 minutes to the center.

Interior 115.5 m², terrace 14.7 m², cellar.



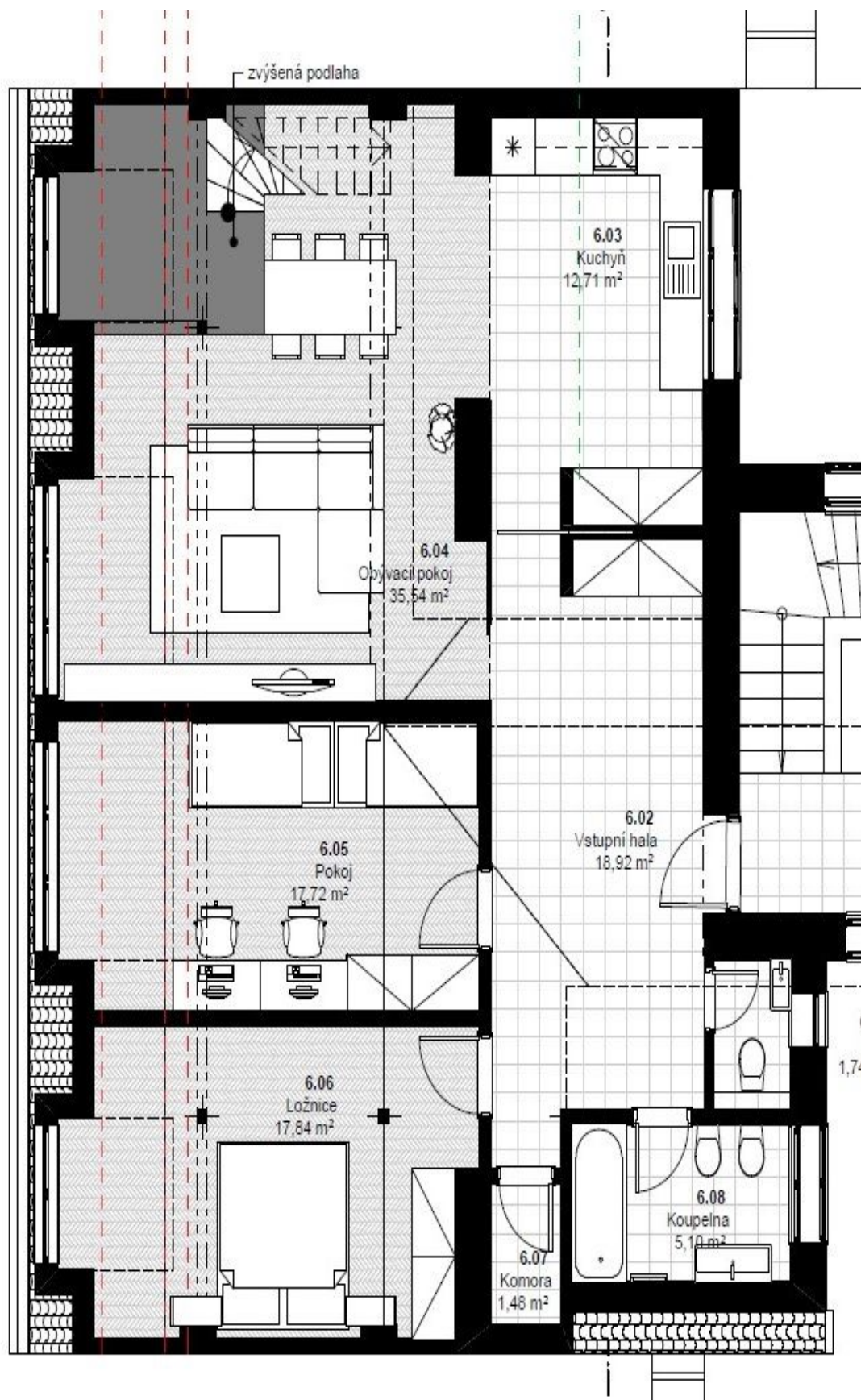
* Area of the unit according to the Civil Code. The area consists of the sum total area of the entire unit bounded by perimeter walls.



Apartment Two-bedroom (3+1)

115 m², Praha 7, Holešovice, Tusarova

Sold





Apartment Two-bedroom (3+1)

115 m², Praha 7, Holešovice, Tusarova

Sold

