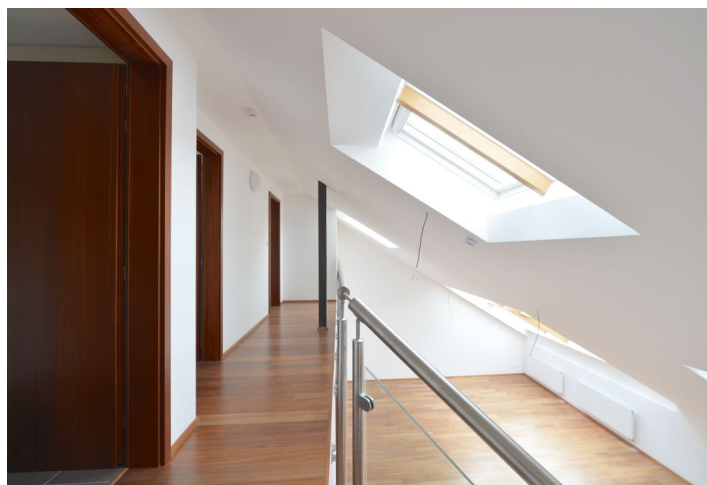
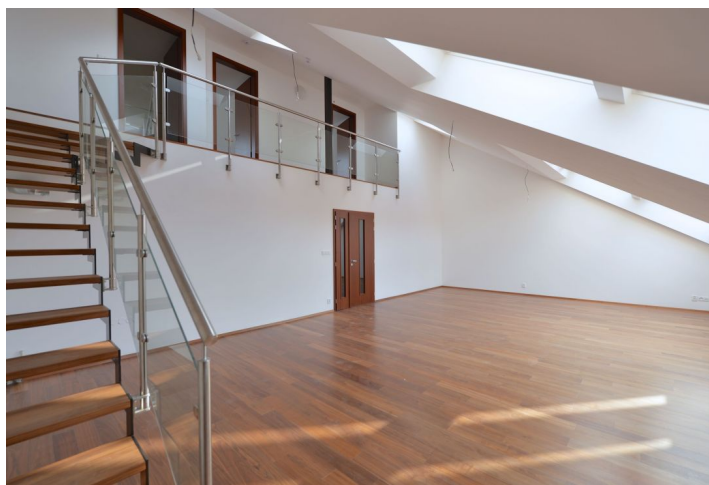




Apartment Four-bedroom (5+kk)

Sold

161 m², Prague 5, Smíchov, Staropramenná





Apartment Four-bedroom (5+kk)

Sold161 m², Prague 5, Smíchov, Staropramenná

Total area	174 m ²
Floor area*	161 m ²
Terrace	13 m ²
Parking	Yes
Garage	Yes
Cellar	-
PENB	G
Reference number	20196

Spacious split-level attic flat with terrace on the 5th and 6th floors of an apartment building with a lift, 24-hour reception and a restaurant in a popular location in Prague 5, 3 minutes walk from the metro station and Nový Smíchov shopping center at Anděl.

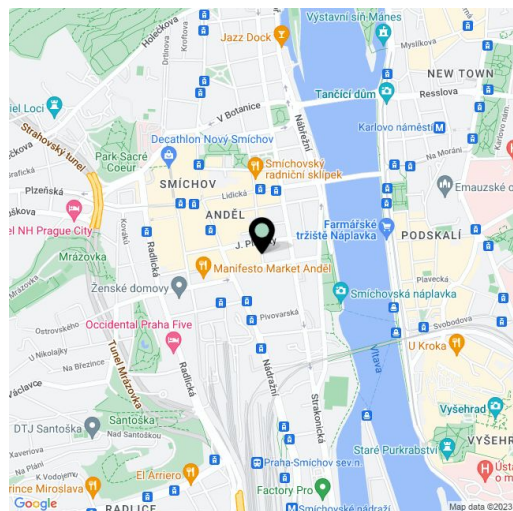
The lower level of the flat consists of an entrance hall, large living room with preparation for kitchen, 2 bedrooms, 2 bathrooms (one of them en-suite), and a storage room. On the upper level there is a gallery, 2 bedrooms with access to the terrace facing a quiet courtyard, and the last bathroom.

Parking space in the garage or in the double deck parking system can be purchased at extra cost.

Three-layer oak flooring, Sandstone floor and wall tiles, **new casement windows**, Villeroy & Boch bathroom fixtures, cassette replica front door.

All amenities in place, excellent transport links to the city thanks to the nearby tram stop, metro station and Smíchovské nádraží train station. Near the house there is a kindergarten, elementary school, health center, bowling, fitness center, skate park.

Interior 160.9 m², terrace 13.1 m².



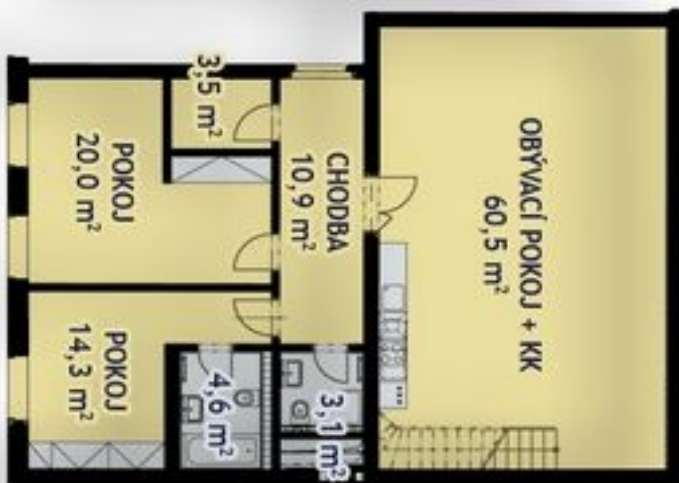
* Area of the unit according to the Civil Code. The area consists of the sum total area of the entire unit bounded by perimeter walls.



Apartment Four-bedroom (5+kk)

Sold

161 m², Prague 5, Smíchov, Staropramenná



6.-7. NP | 174,0 m² | 5+KK

