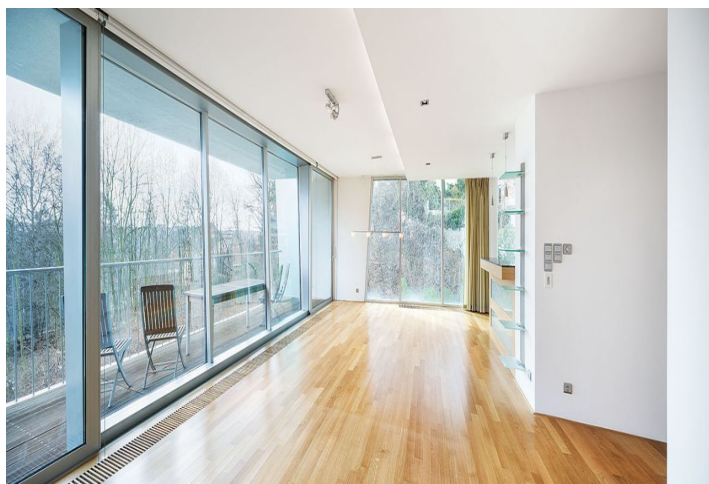




Apartment Two-bedroom (3+kk)

Rented

153 m², Praha 5, Smíchov, Na Hřebenkách





Apartment Two-bedroom (3+kk)

Rented

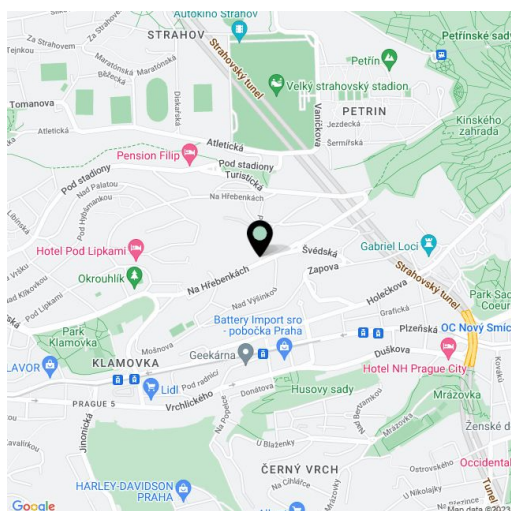
153 m², Praha 5, Smíchov, Na Hřebenkách

Total area	171 m ²
Floor area*	153 m ²
Terrace	18 m ²
Parking	Two garage parking spaces included.
Garage	Yes
Cellar	Yes
PENB	G
Reference number	20202
Available from	Immediately

Top quality 2-bedroom 2-bathroom flat boasting an 18 m² terrace and direct access from the lift. Situated on the first floor of a unique residential project with 24-hour reception, sport and relaxation facilities, security and camera system. The project amenities include an indoor swimming pool, sauna, gym and squash court. Set in a hillside and surrounded with plenty of greenery, convenient to the French School and the Klamovka and Ladronka parks, a few minute drive to the Nový Smíchov shopping and entertainment center or exit to Karlovy Vary and Plzeň.

The interior features a large living room with a fully integrated kitchen and floor-to-ceiling windows leading to the terrace providing tranquil green views. There are two separate bedrooms, two bathrooms, walk-in closet, guest toilet, and utility room.

The equipment includes solid oak floors, polished marble, underfloor heating and sound system in the bathrooms, aluminum windows, interior doors with internal hinges, and plenty of built-in storage space. Two parking spaces and a 10 m² cellar included. Common building charges and deposit for utilities CZK 15,500 per month.



* Area of the unit according to the Civil Code. The area consists of the sum total area of the entire unit bounded by perimeter walls.



Apartment Two-bedroom (3+kk)

Rented

153 m², Praha 5, Smíchov, Na Hřebenkách

