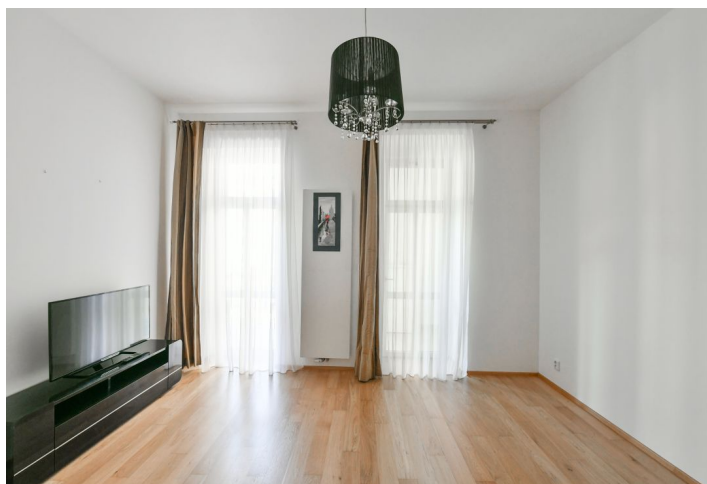




Apartment Two-bedroom (3+kk)

Rented

65 m², Praha 2, Nové Město, Trojická





Apartment Two-bedroom (3+kk)

Rented

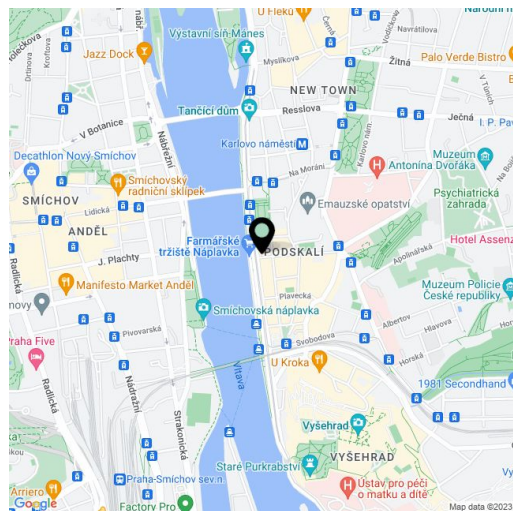
65 m², Praha 2, Nové Město, Trojická

Total area	70 m ²
Floor area*	65 m ²
Balcony	5 m ²
Parking	-
Cellar	Yes
PENB	G
Reference number	20212
Available from	Immediately

Partly furnished 2-bedroom flat with a terrace on the third floor of a meticulously renovated historic corner building with a lift. Located in the center of Prague, just a few steps from the Vltava riverbank and Karlovo náměstí metro station (Palackého náměstí Square), within walking distance of the Vyšehrad Gardens Park and full amenities.

The interior includes living room with a fully fitted open kitchen and access to the terrace facing the quiet courtyard, two bedrooms - one can be used as a study, bathroom with tub and toilet, guest toilet, and an entry hall.

High standard equipment, built-in wardrobes, quality three-layer oak floors with a brush finish, ceramic tiles, new casement windows, wooden interior doors, security entry door, dishwasher, microwave oven, video entry phone, cellar. Service charges, water and heating: CZK 3500/month. Electricity is billed separately (transfer to the tenant, around CZK 1000/month).



* Area of the unit according to the Civil Code. The area consists of the sum total area of the entire unit bounded by perimeter walls.