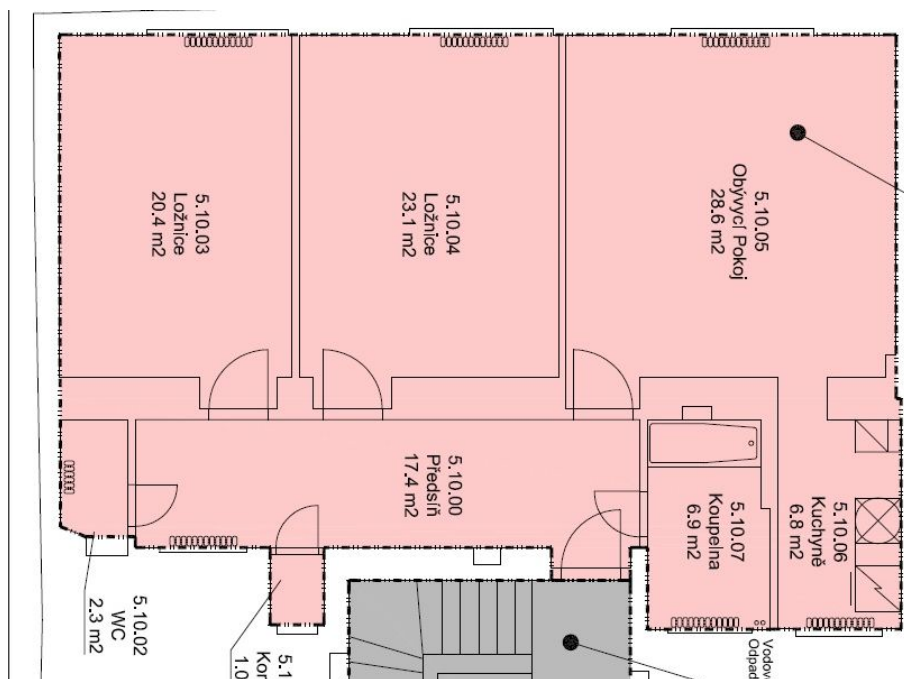




## Apartment Two-bedroom (3+1)

106 m<sup>2</sup>, Prague 7, Holešovice, Tusarova

Sold





## Apartment Two-bedroom (3+1)

**Sold**106 m<sup>2</sup>, Prague 7, Holešovice, Tusarova

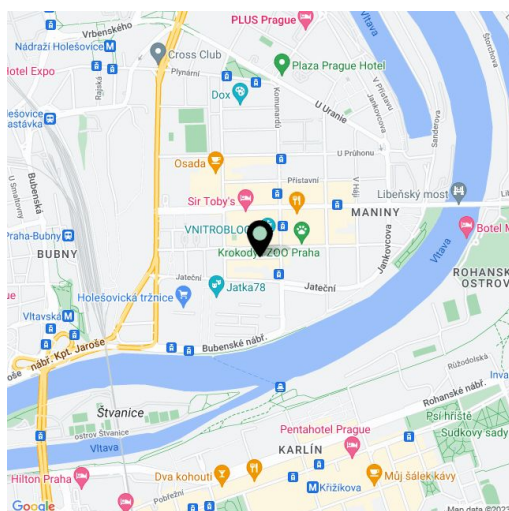
Total area	106 m <sup>2</sup>
Parking	-
Cellar	Yes
PENB	G
Reference number	20226

South-oriented, quiet flat on the 4th floor of an apartment building with a lift, currently undergoing a renovation, situated in a dynamically developing part of Prague 7 - Holešovice, right in front of a park, only a few steps from a tram stop and 5 minutes to metro Vltavská. Completion of the reconstruction of the building is scheduled for autumn 2015.

The layout consists of an entrance hall, bright living room, kitchen, 2 bedrooms, bathroom, separate toilet, and a water closet with gas boiler and washing machine connection. **Wood parquet floors**, quality floor and wall tiles, **renewed casement windows**. The purchase price includes a cellar.

The house is situated in an **attractive location near the riverbank**, in the vicinity of the Rock Opera theater, a kindergarten, school, supermarket, sports and medical facilities and restaurants. 5 minutes to the fitness club or a squash hall, 10 minutes to CZ Golf golf course in Libeň, 10 minutes to the center.

Interior 106.3 m<sup>2</sup>, cellar.



\* Area of the unit according to the Civil Code. The area consists of the sum total area of the entire unit bounded by perimeter walls.