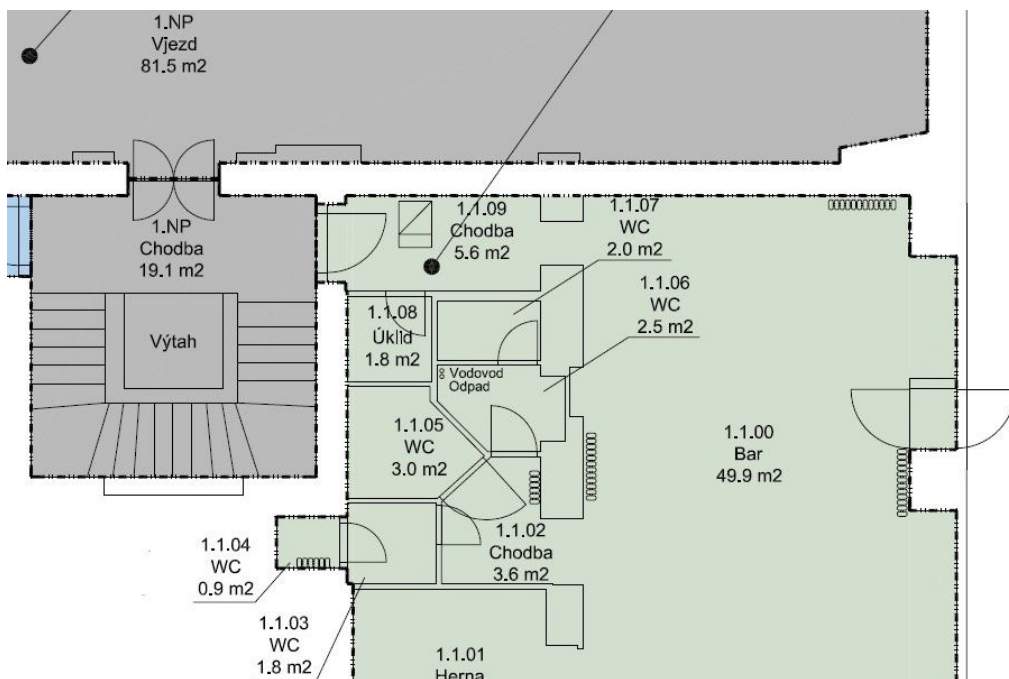




Retail space

80 m<sup>2</sup>, Prague 7, Holešovice, Tusarova

Sold





## Retail space

**Sold**80 m<sup>2</sup>, Prague 7, Holešovice, Tusarova

Total area	80 m <sup>2</sup>
Parking	-
PENB	G
Reference number	20229

Commercial premises suitable for use as a bar, cafe or wine bar, on the ground floor of an apartment building currently undergoing a renovation, situated in a dynamically developing part of Prague 7 - Holešovice, right in front of a park, only a few steps from a tram stop and 5 minutes to the Vitavská metro station.

The layout offers a main room with direct access from the street, gaming room, sanitary facilities, and rooms for the staff including toilets and utility room, with a second entrance from the common area of the house. Suitable for reconstruction. The building is situated in an attractive location near the riverbank, with excellent transport links to the center.

Interior 79.5 m<sup>2</sup>.

