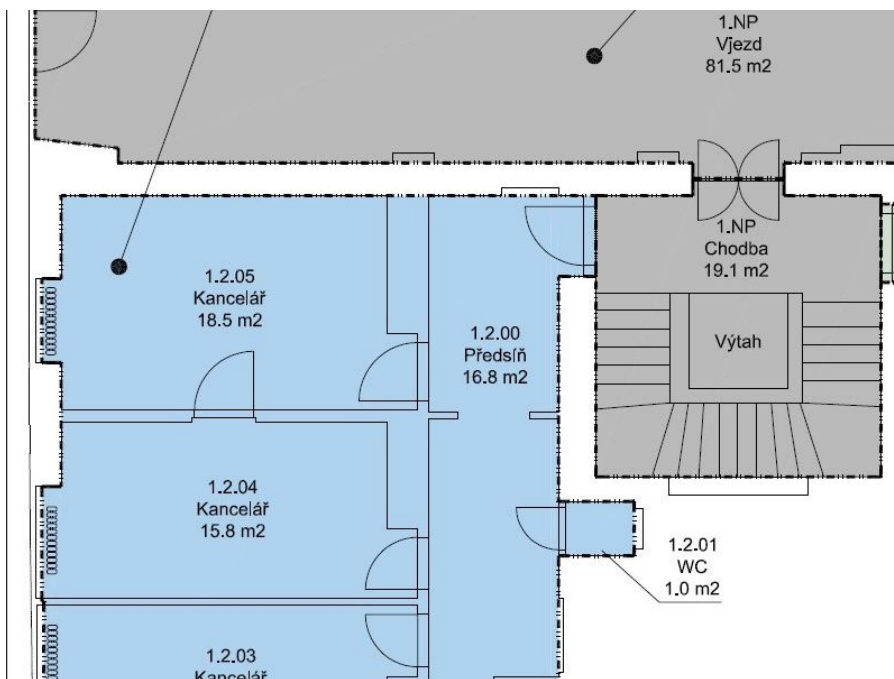




Office space

Prague 7, Holešovice, Tusarova

Sold



**Office space****Sold**

Prague 7, Holešovice, Tusarova

Available area	69 m ²
Tenant consumption	—
Parking	—
Parking service charges	—
Parking ratio	—
Certification	—
PENB	G
Reference number	20230

South-oriented offices suitable for reconstruction with windows facing a quiet courtyard, on the ground floor of an apartment building currently undergoing a renovation, situated in a dynamically developing part of Prague 7 - Holešovice, right in front of a park, only a few steps from a tram stop and 5 minutes to metro Vltavská.

The layout offers an entrance hall with kitchen corner, toilet and three large rooms. Access from the common area of the house. The building is situated in an attractive location near the riverbank, with plenty of cafés, restaurants and excellent transport links to the center.

Interior 68.5 m².

