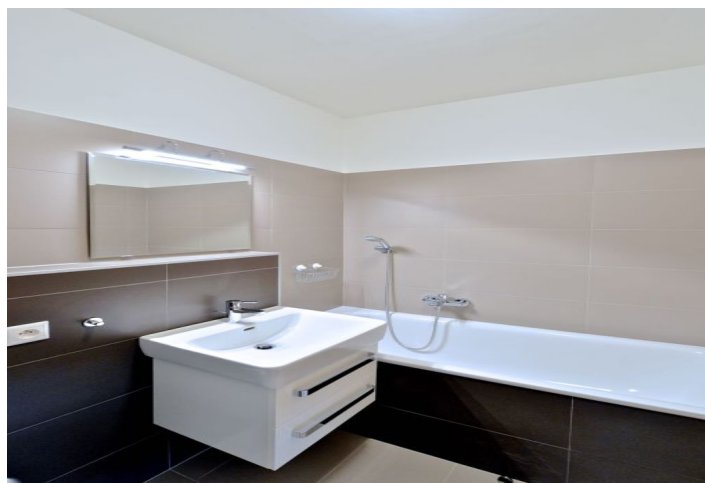
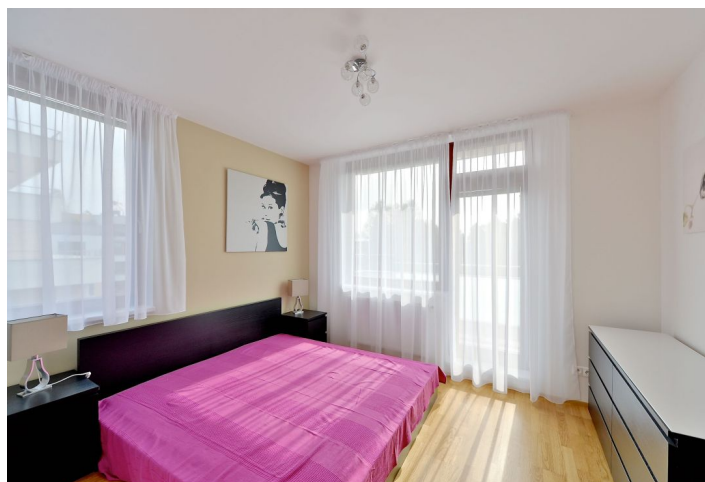




Apartment One-bedroom (2+kk)

Rented

55 m², Prague 6, Veleslavín, Pod Dvorem





Apartment One-bedroom (2+kk)

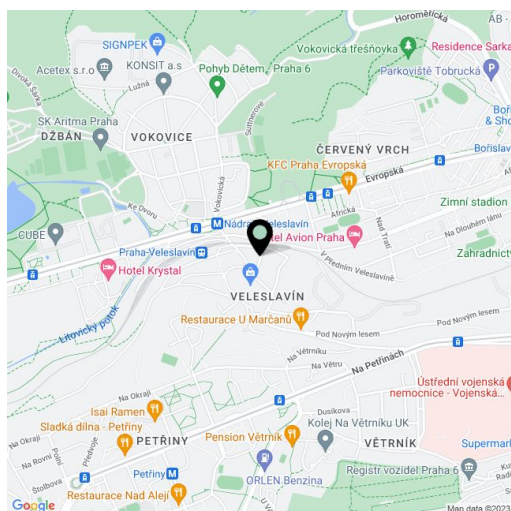
Rented55 m², Prague 6, Veleslavín, Pod Dvorem

Total area	71 m ²
Floor area*	55 m ²
Terrace	16 m ²
Parking	Garage parking.
Garage	Yes
Cellar	Yes
Service price	CZK 3,000 /mo
PENB	G
Reference number	20262
Available from	Immediately

Bright fully furnished 1-bedroom flat with a 16 m² terrace on the third floor with lift in a newly built residential project with parking. Situated next to a park, on the border of Veleslavín and Ořechovka Prague residential areas, with quick access to the city center, with Nádraží Veleslavín metro station, line A, and trams just a few minute walk from the building. Green and quiet location, convenient to the airport and international schools in Prague 6.

The interior includes living room with a fully fitted open kitchen and dining area, one bedroom with an en-suite bathroom (tub, toilet), guest toilet, and entry hall. The terrace is accessible from both rooms.

Green views, wooden floors, tiles, security entry door, blinds, curtains, washer, dishwasher, TV, video entry phone, cellar, garden furniture. Shared pram and bike storage in the building. One underground garage parking space included. Monthly deposit for common building charges and utilities CZK 3,000.



* Area of the unit according to the Civil Code. The area consists of the sum total area of the entire unit bounded by perimeter walls.