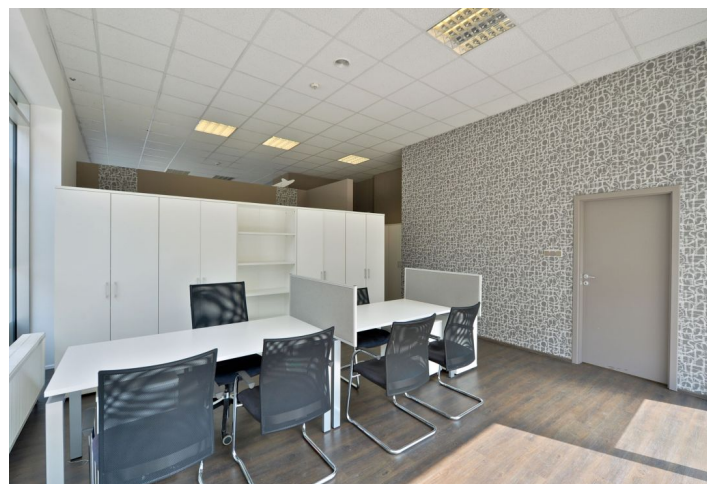




Retail space

Rented

Prague 7, Holešovice, Prague Marina - Jankovcova





Prague 7, Holešovice, Prague Marina - Jankovcova

Available area	194 m ²
Parking	CZK 3000 / ps / month
PENB	G
Reference number	20280

A-class retail space in a residential part of the prestigious multi-functional Prague Marina project which is located in an up-and-coming part of the Prague Holešovice quarter, in the area of the former most important Prague port that features excellent accessibility. The project includes, apart from high quality residential space, also offices of many important Czech and international companies, stores of well-established brands, luxury restaurants and stylish cafés. The location right on the waterfront of the Vltava River will offer sporting facilities such as a cycling route and tennis or beach-volleyball courts.

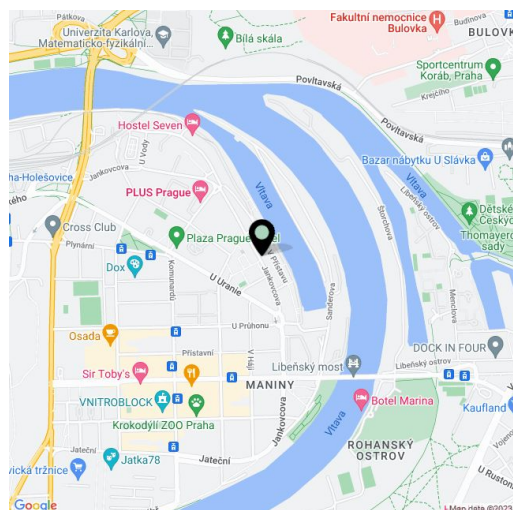
Location:

The project is located in Prague 7, close to the historical center (5 minutes by car) and close to the Nádraží Holešovice, Vltavská (line C), and Palmovka (line B) metro stations while the Dělnická and Ortenovo náměstí tram stops are a mere few minutes' walk. Parking is available directly in front of the building.

Features and Services:

Amenities include full CCTV for garages and external areas, fire alarm system, sprinklers.

Rental and service charges listed without VAT. Lessee pays no commission.





Retail space

Prague 7, Holešovice, Prague Marina - Jankovcova

Rented

