



**Office space**

Prague 5, Hlubočepy, Nad Pomníkem

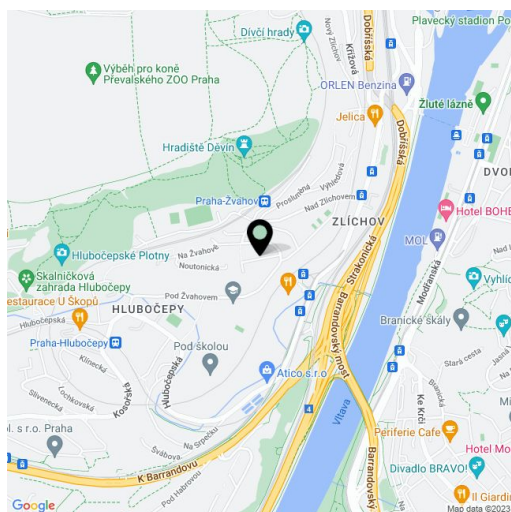
Sold

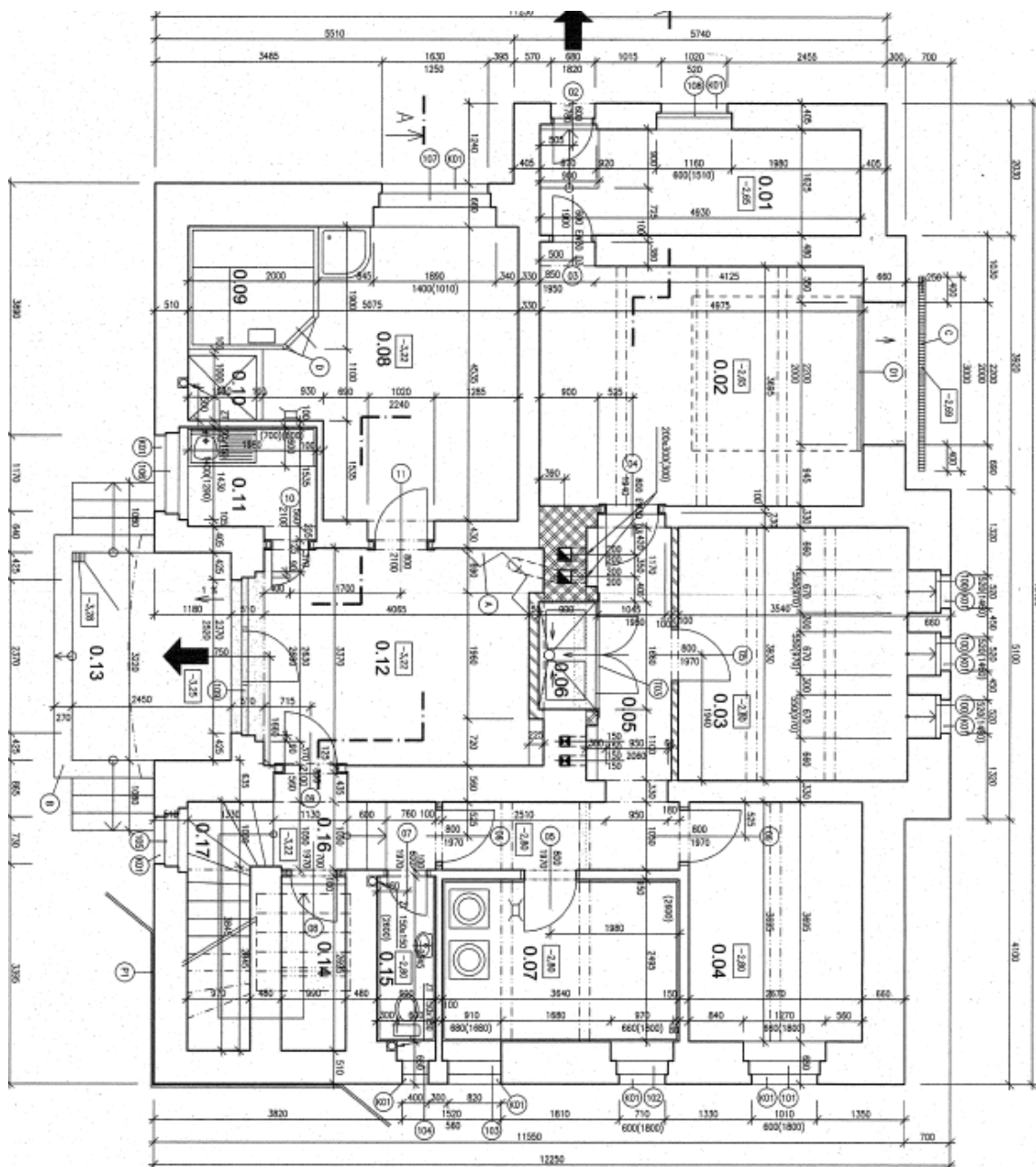
Available area	877 m ²
Tenant consumption	—
Parking	Yes
Parking service charges	—
Parking ratio	—
Certification	—
PENB	G
Reference number	20335

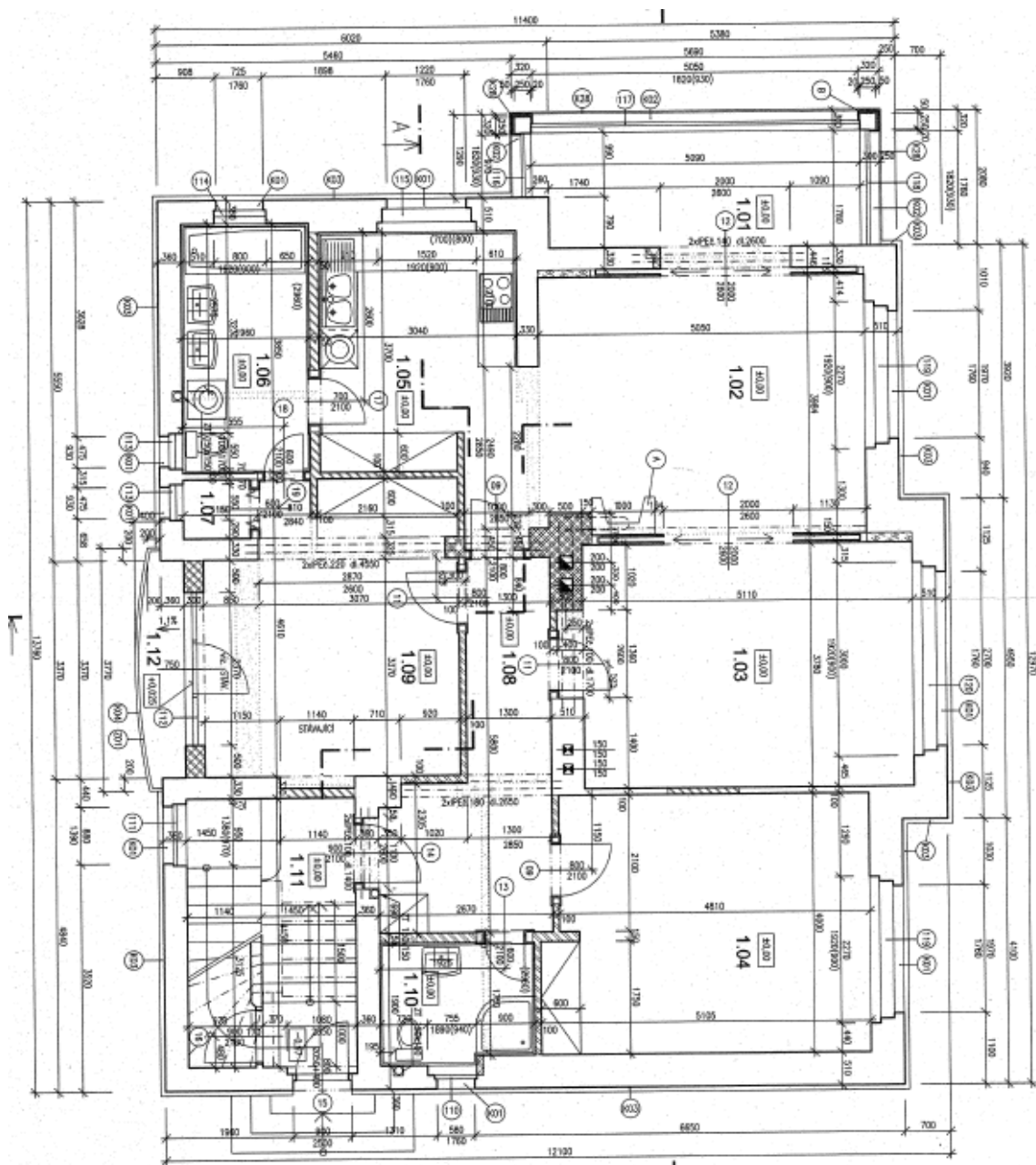
Three-story 1930's villa with a large landscaped garden complete with mature trees, situated in a residential area near Prokopské údolí Valley. The villa is suitable for use as a representative seat of a company or an embassy.

The interior of the house was renovated in 2003; the house is now used as three separate flats on each floor (4+kk, 4+kk, 2+kk plus gallery). Sauna + storage + garage for 2 cars and one-bedroom unit in the basement.

Quiet residential location, minutes from Prokop Valley, easy access to shopping and entertainment in Anděl and the city center.









Office space

Prague 5, Hlubočepy, Nad Pomníkem

Sold

