



House Eleven-bedroom (12+1)

Sold

471 m², Prague 5, Smíchov, Mošnova





House Eleven-bedroom (12+1)

Sold471 m², Prague 5, Smíchov, Mošnova

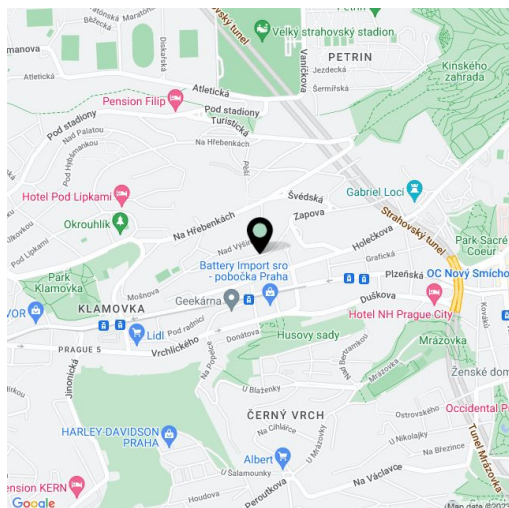
Plot	1 264 m ²
Foot print	223 m ²
Garden	1 041 m ²
Parking	4 parking spaces in 2 garages.
Garage	Yes
Cellar	-
PENB	G
Reference number	20360

Historic villa with 3 residential units boasting views of surrounding greenery; complete with a garage. Located in an attractive residential part of Smíchov, just a few minutes' walk from a bus stop and a 10-minute drive to the Nový Smíchov shopping center and Anděl metro station.

The layout of the four floors offers **2 three-bedroom apartments** and **1 three-bedroom split level attic flat**. Each apartment has its own kitchen, bathroom and separate toilet. The interiors are suitable for reconstruction, the house itself is in very good condition. There is a **possibility to build a smaller house** in the upper part of the plot.

Quiet location with lots of greenery and within easy reach of all amenities.

Interior 471 m², garage 37 + 24 m², built-up area 223 m², garden 1 041 m², plot 1 264 m².

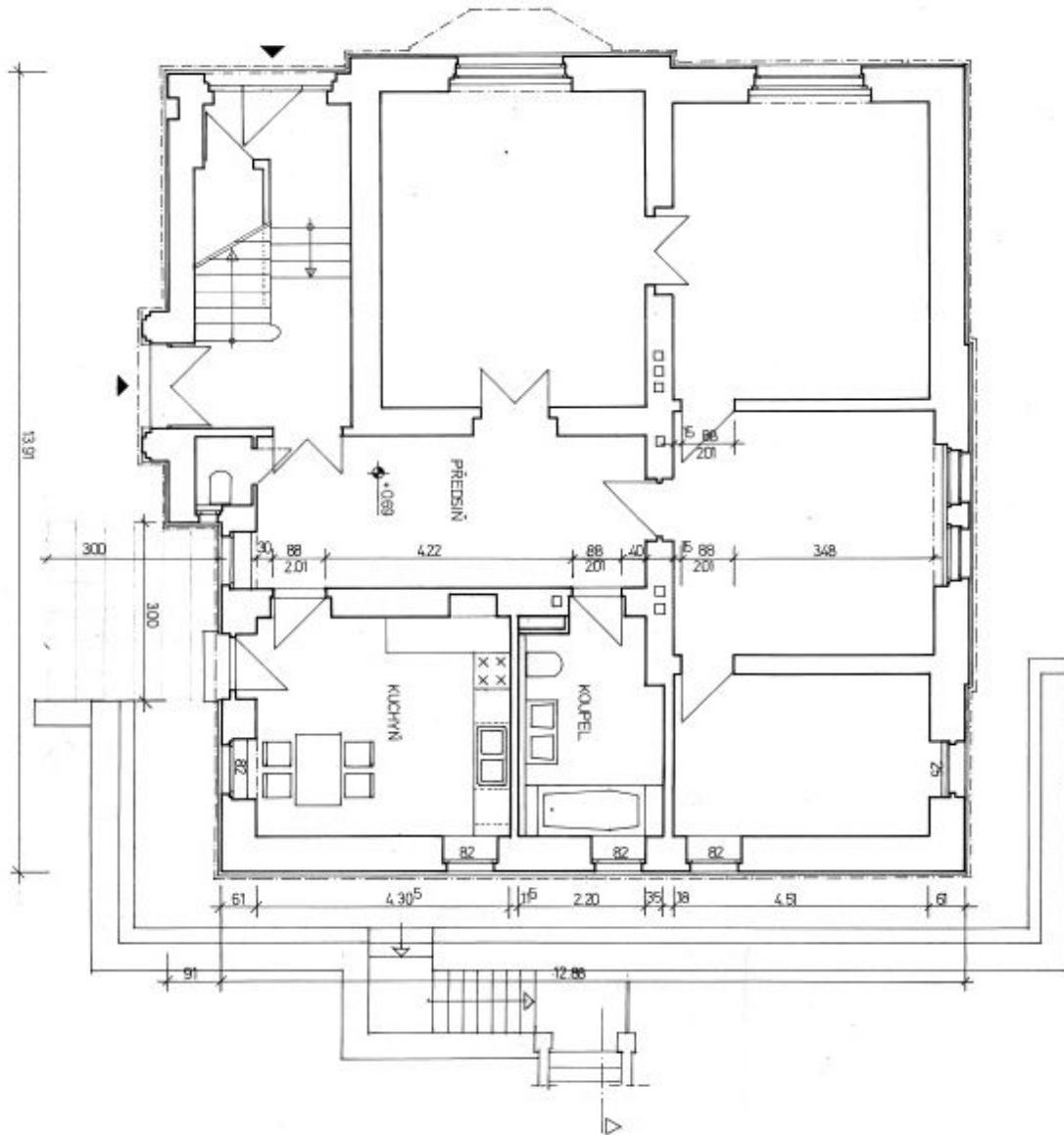




House Eleven-bedroom (12+1)

471 m², Prague 5, Smíchov, Mošnova

Sold

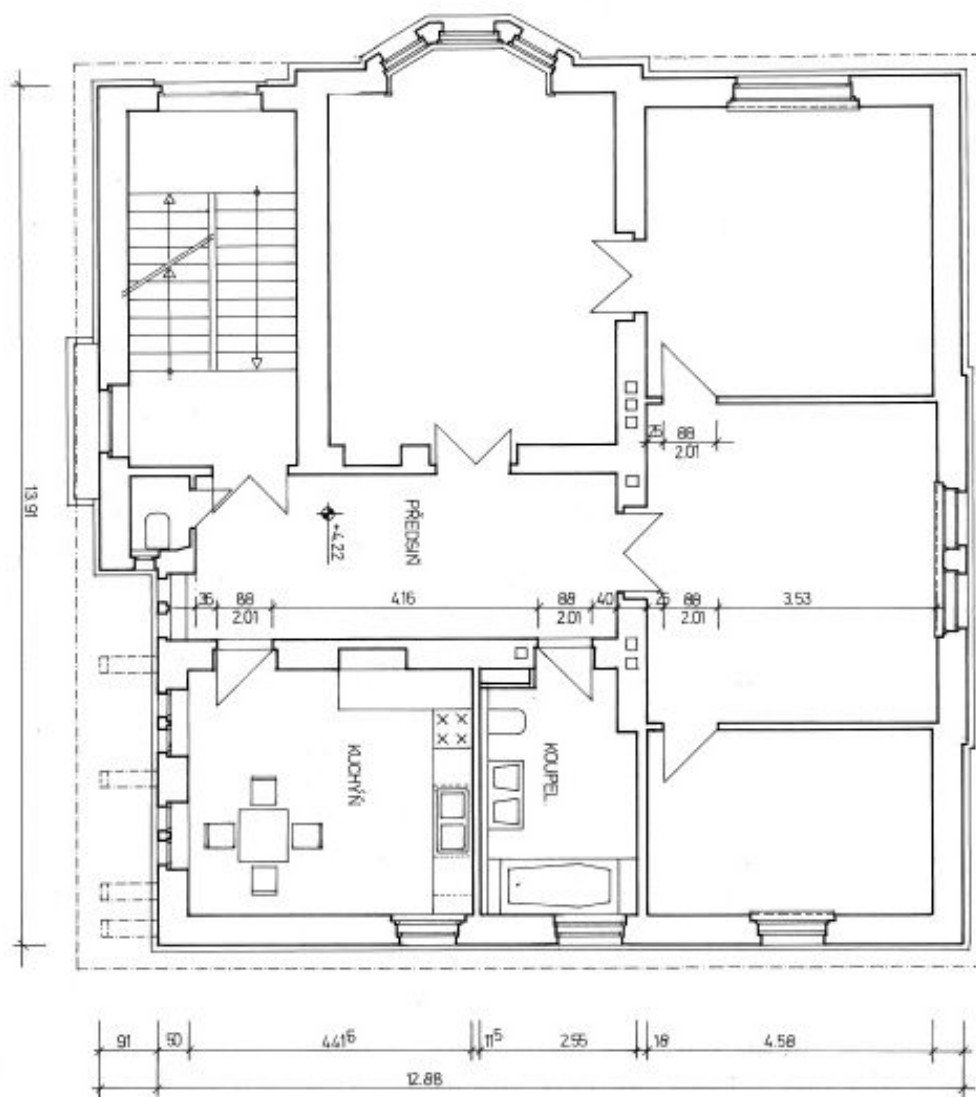




House Eleven-bedroom (12+1)

471 m², Prague 5, Smíchov, Mošnova

Sold

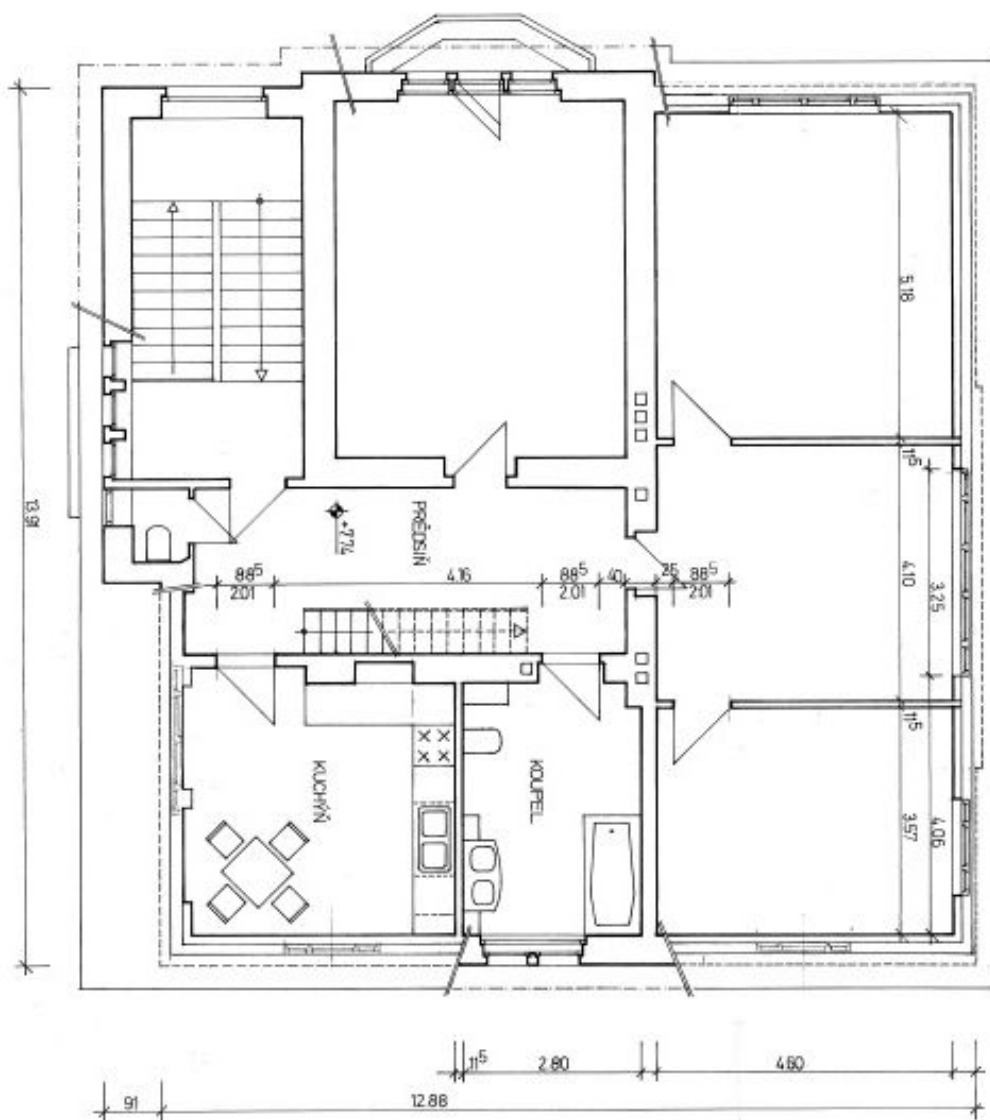




House Eleven-bedroom (12+1)

471 m², Prague 5, Smíchov, Mošnova

Sold





House Eleven-bedroom (12+1)

471 m², Prague 5, Smíchov, Mošnova

Sold

