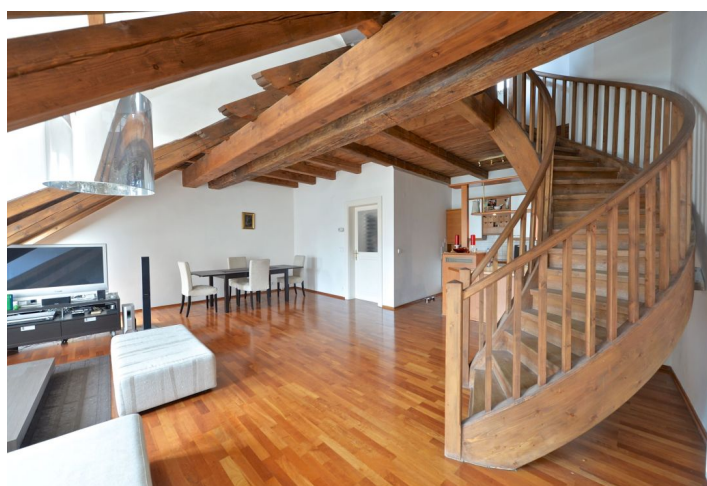




## Apartment Two-bedroom (3+kk)

**Sold**

150 m², Prague 1, Malá Strana, Mostecká





## Apartment Two-bedroom (3+kk)

**Sold**150 m<sup>2</sup>, Prague 1, Malá Strana, Mostecká

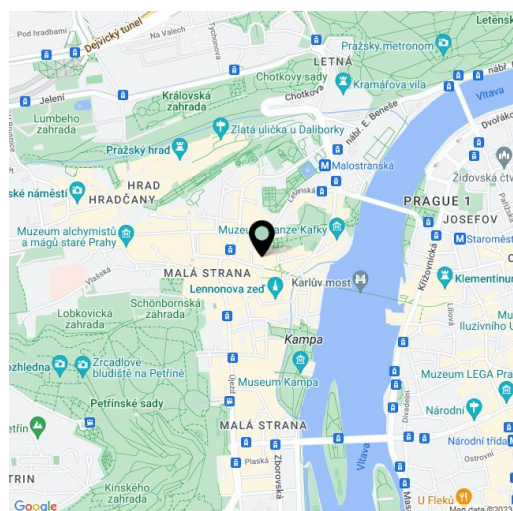
Total area	150 m <sup>2</sup>
Parking	-
Cellar	-
PENB	G
Reference number	20403

Attic apartment with original exposed beams and unique views in the exclusive area of Malá Strana, just a few steps from Charles Bridge and Malostranské náměstí square - and yet offering an undisturbed private tranquil atmosphere. The apartment is located on the 3rd and 4th floors of a renovated historic building without a lift, with carefully preserved original features and attractive common areas and facade.

This stylish apartment on its **first level** offers a bright comfortable living room with kitchen and dining area, a bedroom, bathroom, utility room and guest toilet. The **upper floor**, which is accessible by wooden stairs, features the second very spacious bedroom / gallery that is open to the living room (part of the gallery can be separated with the possibility of creating a closed bedroom). Features include wooden floors, casement windows, original beams, gas boiler, videophone. Entrance to the apartment is on the second floor of the building where we find an entrance hall and stairs leading to the living space.

The house is located on a bustling street in the picturesque UNESCO-protected area of Malá Strana, just a few steps from Charles Bridge and Lesser Town square, however, it offers a quiet peaceful atmosphere.

Interior 150 m<sup>2</sup>.



\* Area of the unit according to the Civil Code. The area consists of the sum total area of the entire unit bounded by perimeter walls.