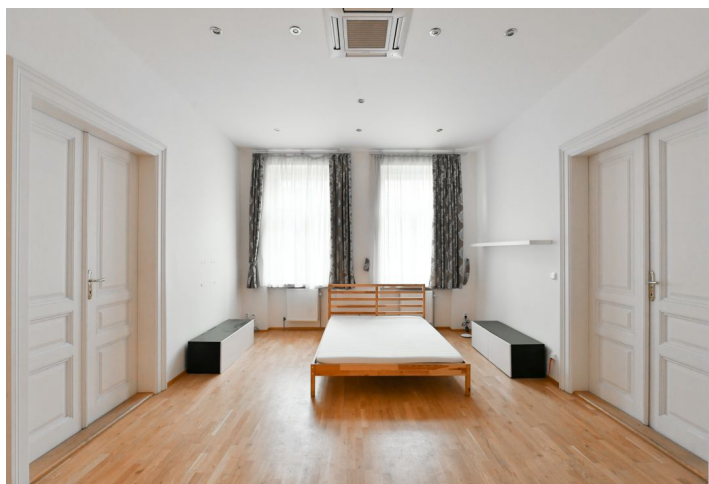
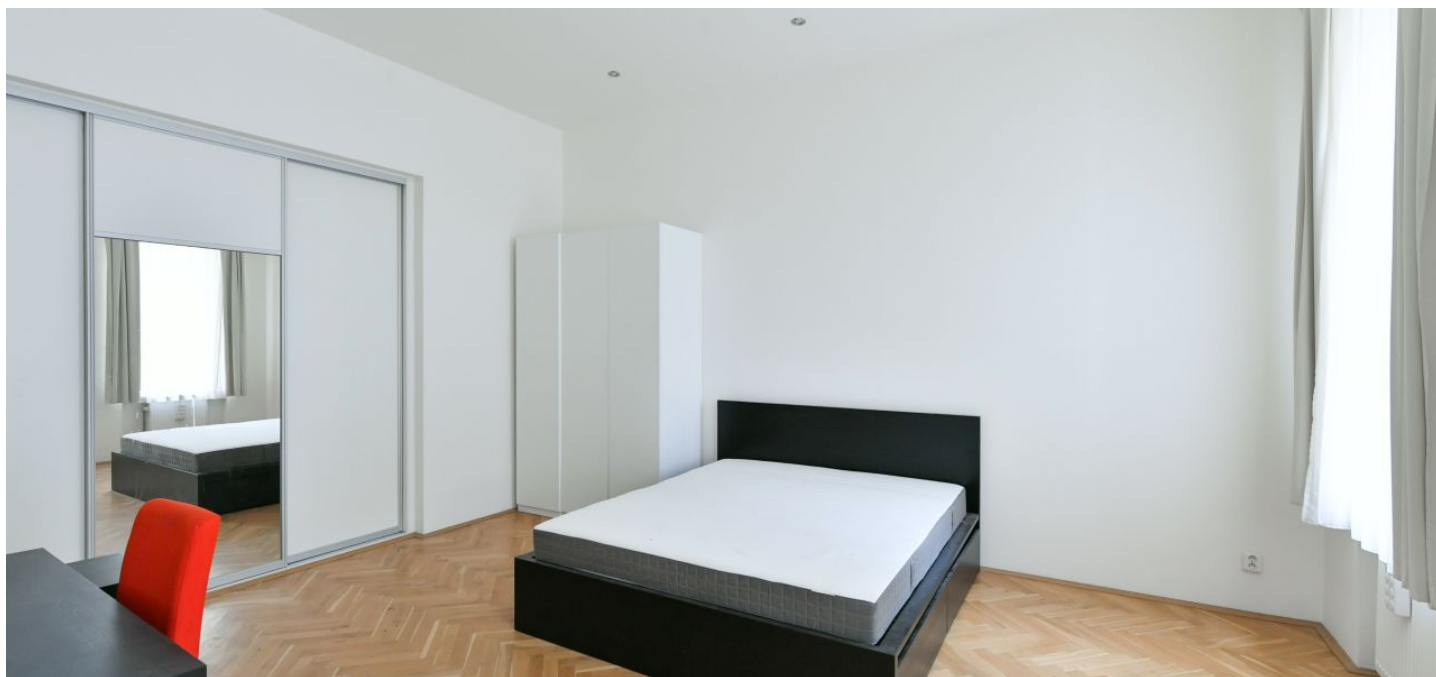




## Apartment Four-bedroom (5+1)

Rented

184 m<sup>2</sup>, Prague 1, Nové Město, Na Poříčí





## Apartment Four-bedroom (5+1)

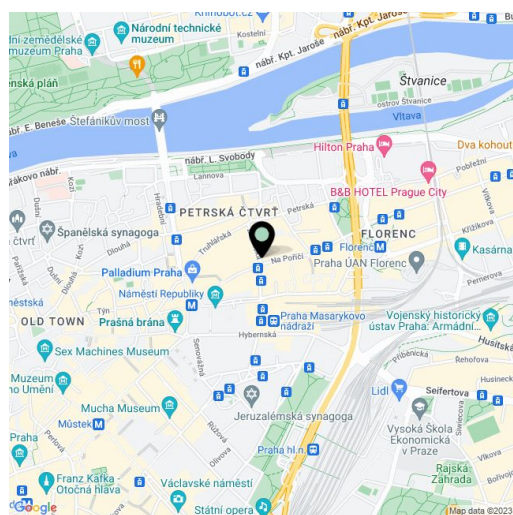
**Rented**184 m<sup>2</sup>, Prague 1, Nové Město, Na Poříčí

Total area	184 m <sup>2</sup>
Parking	Parking available.
Garage	Yes
Cellar	Yes
PENB	G
Reference number	20542
Available from	Immediately

**Air-conditioned unfurnished 3-bedroom 2-bathroom flat on the 2nd floor of a building with lift, reception and underground parking. Centrally located just a minute from Náměstí Republiky Square with multiple transportation links, around the corner from the Hilton Prague Old Town Hotel, and steps from the Palladium shopping mall.**

The interior includes living room, a fully fitted eat-in kitchen, three bedrooms, fourth bedroom/study accessible from the living room, bathroom (bathtub, double sink, bidet, toilet), shower bathroom with toilet, guest toilet, a fitted walk-in closet, storage room, utility room, and entry hall.

Preserved original features, high ceilings, solid wood parquet floors, triple glass in the windows, security entry door, satellite reception, alarm, dishwasher, washer, cellar. Underground garage parking space available at CZK 3,800/month + VAT. Common building charges CZK 2,000/month. Utilities are billed separately.



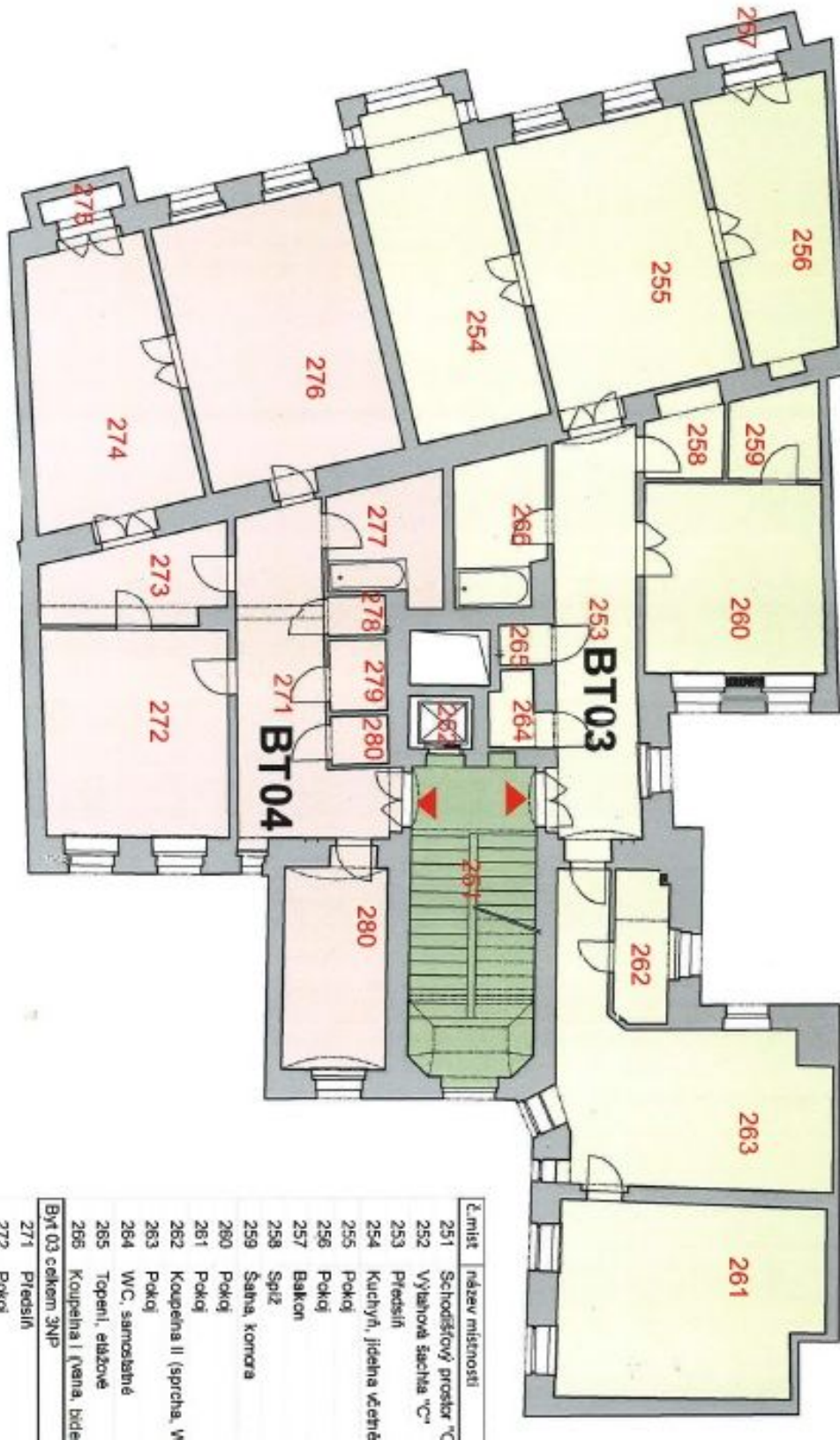
\* Area of the unit according to the Civil Code. The area consists of the sum total area of the entire unit bounded by perimeter walls.



## Apartment Four-bedroom (5+1)

184 m<sup>2</sup>, Prague 1, Nové Město, Na Poříčí

Rented



Číslo míst.	název místnosti
251	Schodišťový prostor "C"
252	Výšňková šachta "C"
253	Předsíň
254	Kuchyň, jídelna včetně
255	Pokoj
256	Pokoj
257	Balkon
258	Spíž
259	Šatna, komora
260	Pokoj
261	Pokoj
262	Koupelna II (sprcha, V
263	Pokoj
264	WC, samostatné
265	Topení, elážové
266	Koupelna I (vana, bidle
Byt 03 celkem 3NP	
271	Předsíň
272	Pokoj
273	Šatna, komora
274	Pokoj
275	Balkon
276	Kuchyň, jídelna