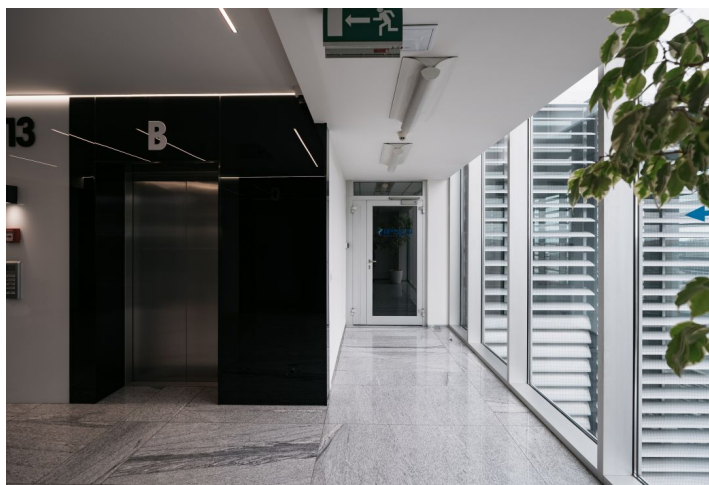
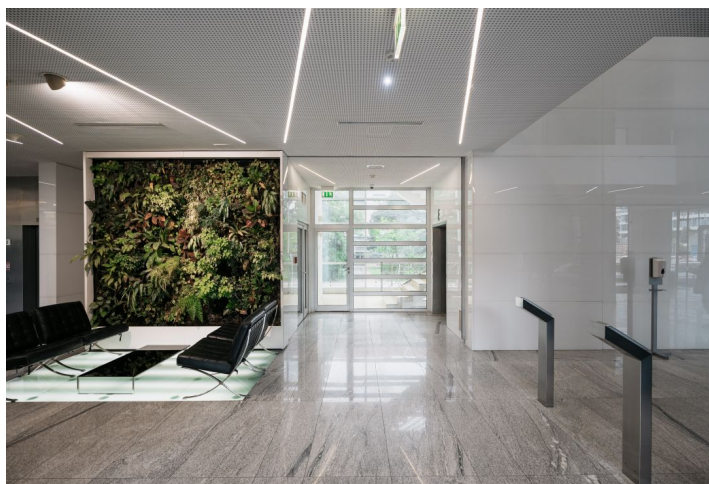




## Office space

Prague 4, Krč, Olbrachtova

€ 19.50 / m<sup>2</sup> | CZK 488 / m<sup>2</sup>



**Office space**

Prague 4, Krč, Olbrachtova

**€ 19.50 / m<sup>2</sup> | CZK 488 / m<sup>2</sup>**

<b>Service price</b>	178 CZK monthly per m <sup>2</sup>
<b>Available area</b>	85 m <sup>2</sup>
<b>Cellar</b>	-
<b>Parking</b>	-
<b>PENB</b>	G
<b>Reference number</b>	20549

Office space for sublease until the end of February 2026 on the top floor, 14th floor, in an office building located in Prague 4. The building has a representative central reception, magnetic card access, security and modern elevators.

**Location:**

Excellent transport accessibility by car and public transport - the building is located next to the main highway and D1 motorway. The metro station Budějovická (line C) is located directly below the building.

**Features and Services:**

- Representative central reception
- 24/7 security
- Controlled magnetic card access
- CCTV monitoring
- Modern elevators
- Cooling
- Openable windows
- Electronic fire alarm system
- Kitchenette
- Social facilities

Rental and service charges listed without VAT. Lessee pays no commission.

