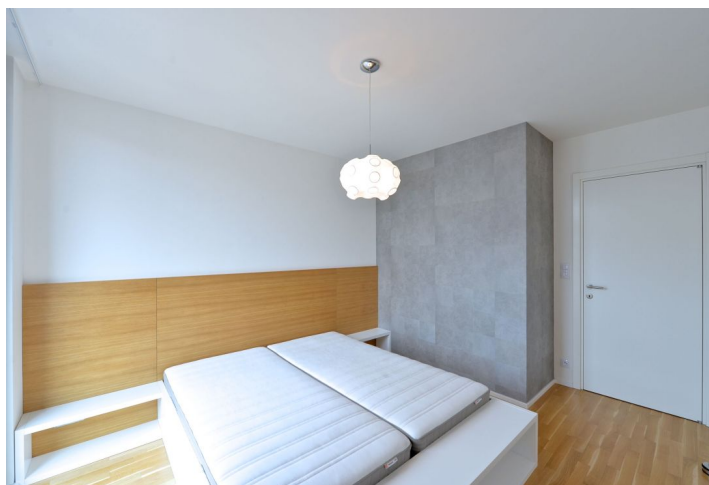




Apartment Two-bedroom (3+kk)

Rented

86 m², Prague 4, Pankrác, Kischova





Apartment Two-bedroom (3+kk)

Rented

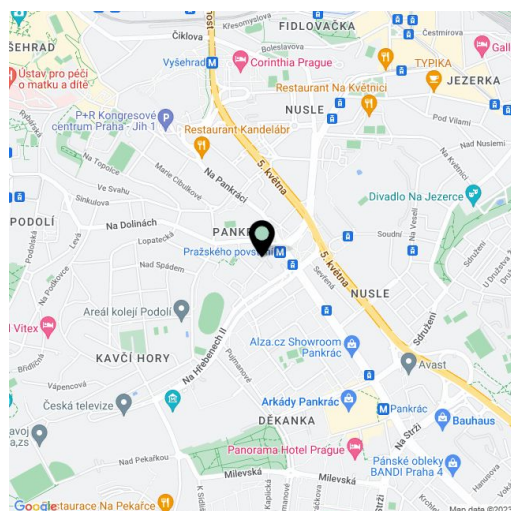
86 m², Prague 4, Pankrác, Kischova

Total area	96 m ²
Floor area*	86 m ²
Terrace	10 m ²
Parking	Garage parking.
Garage	Yes
Cellar	Yes
PENB	G
Reference number	20565
Available from	Immediately

Located just 100 m from Pražského povstání metro station, this partly furnished 2-bedroom flat with a 10 m² terrace is situated on the seventh floor of a contemporary residential project with underground parking and camera system. Located moments from the Central Park and Czech TV grounds, a few minute walk to the Arkády Pankrác shopping mall and convenient to the D1 highway.

The interior features two separate bedrooms, a corner living room with a fully fitted open kitchen and dining area plus access to the terrace, bathroom with a walk-in shower and tub, toilet, a fitted storage room, and a spacious entry hall.

Wooden floating floors, tiles, security entry door, built-in wardrobes, French windows, outside automatic sun blinds, washer, dishwasher, microwave oven, bed linen, video entry phone, cellar, lift, pram and bike storage in the building. One garage space included, one more is available at an additional fee. Common building charges and utilities around CZK 5000 per month. Available from March 2022.



* Area of the unit according to the Civil Code. The area consists of the sum total area of the entire unit bounded by perimeter walls.