



# Apartment building

471 m<sup>2</sup>, Prague 5, Smíchov, Mošnova

Sold





## Apartment building

471 m<sup>2</sup>, Prague 5, Smíchov, Mošnova

**Sold**

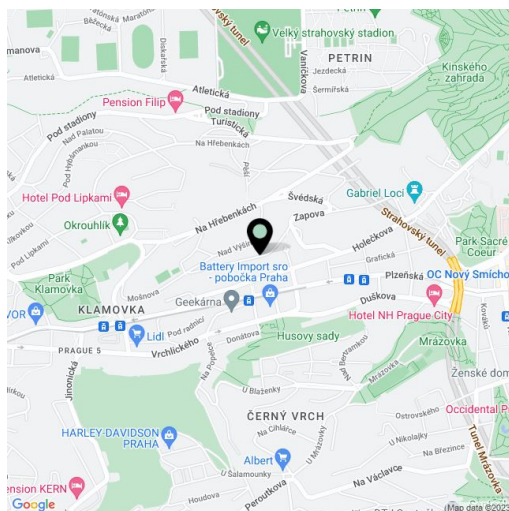
Total gross floor area of the building	471 m <sup>2</sup>
Total net leasable area of the building	471 m <sup>2</sup>
Plot	1 264 m <sup>2</sup>
Foot print	223 m <sup>2</sup>
Parking	4 parking spaces in 2 garages.
Garage	Yes
Cellar	-
PENB	G
Reference number	20634

**1930's villa with 3 residential units, green views and garages, located in an attractive residential part of Smíchov, a few minutes walk from the bus stop and a 10-minute drive to the Nový Smíchov shopping center and Anděl metro station.**

The layout of the four floors offers **2 three-bedroom apartments** and **1 three-bedroom split level attic flat**. Each apartment has its own kitchen, bathroom and separate toilet. The interiors are suitable for reconstruction, the house itself is in a very good condition. There is **a possibility to build a smaller house** in the upper part of the plot.

**Quiet location with lots of greenery** and within easy reach of all amenities.

The interior of 471 m<sup>2</sup>, garage 37 + 24 m<sup>2</sup>, built-up area 223 m<sup>2</sup>, garden 1 041 m<sup>2</sup>, plot 1 264 m<sup>2</sup>.

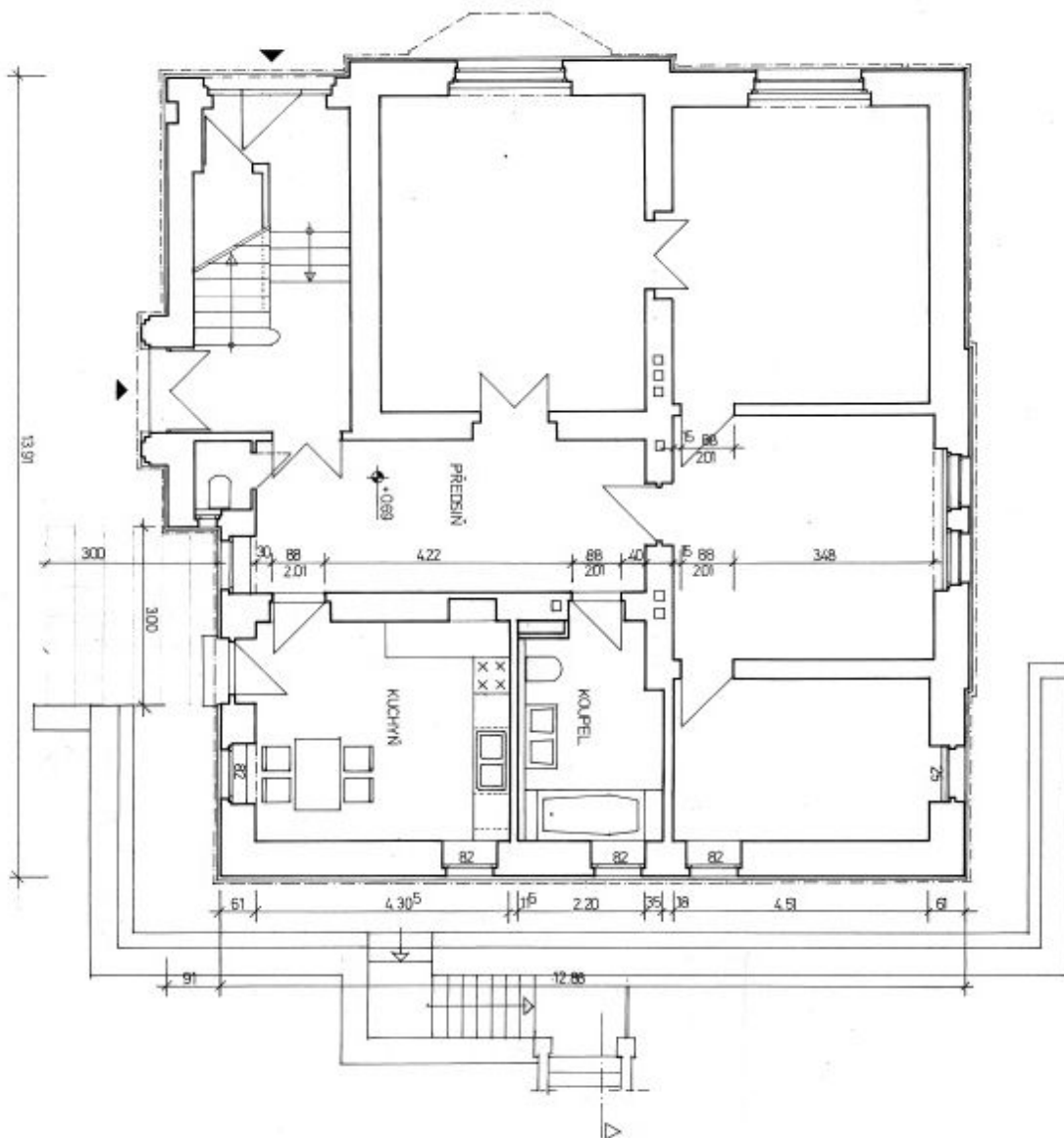




## Apartment building

471 m<sup>2</sup>, Prague 5, Smíchov, Mošnova

Sold

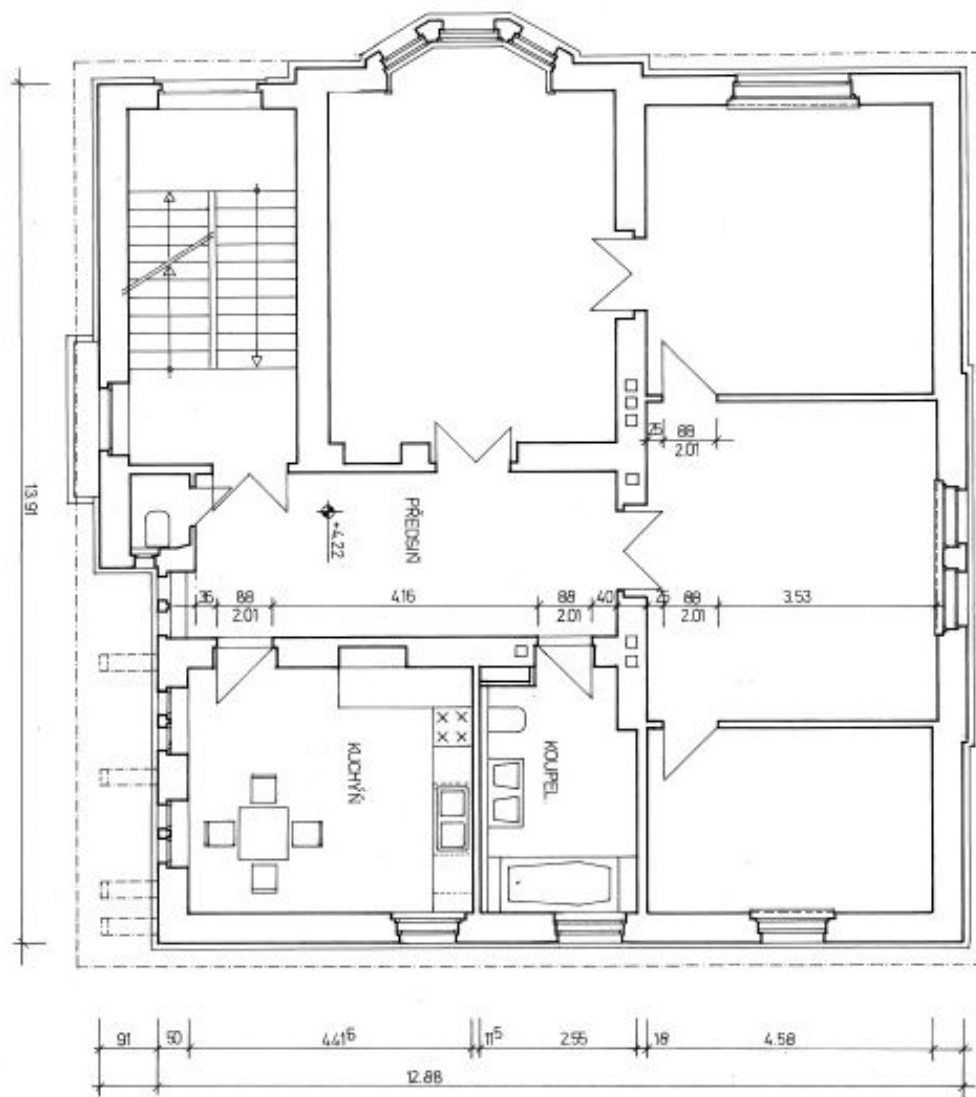




# Apartment building

471 m<sup>2</sup>, Prague 5, Smíchov, Mošnova

**Sold**

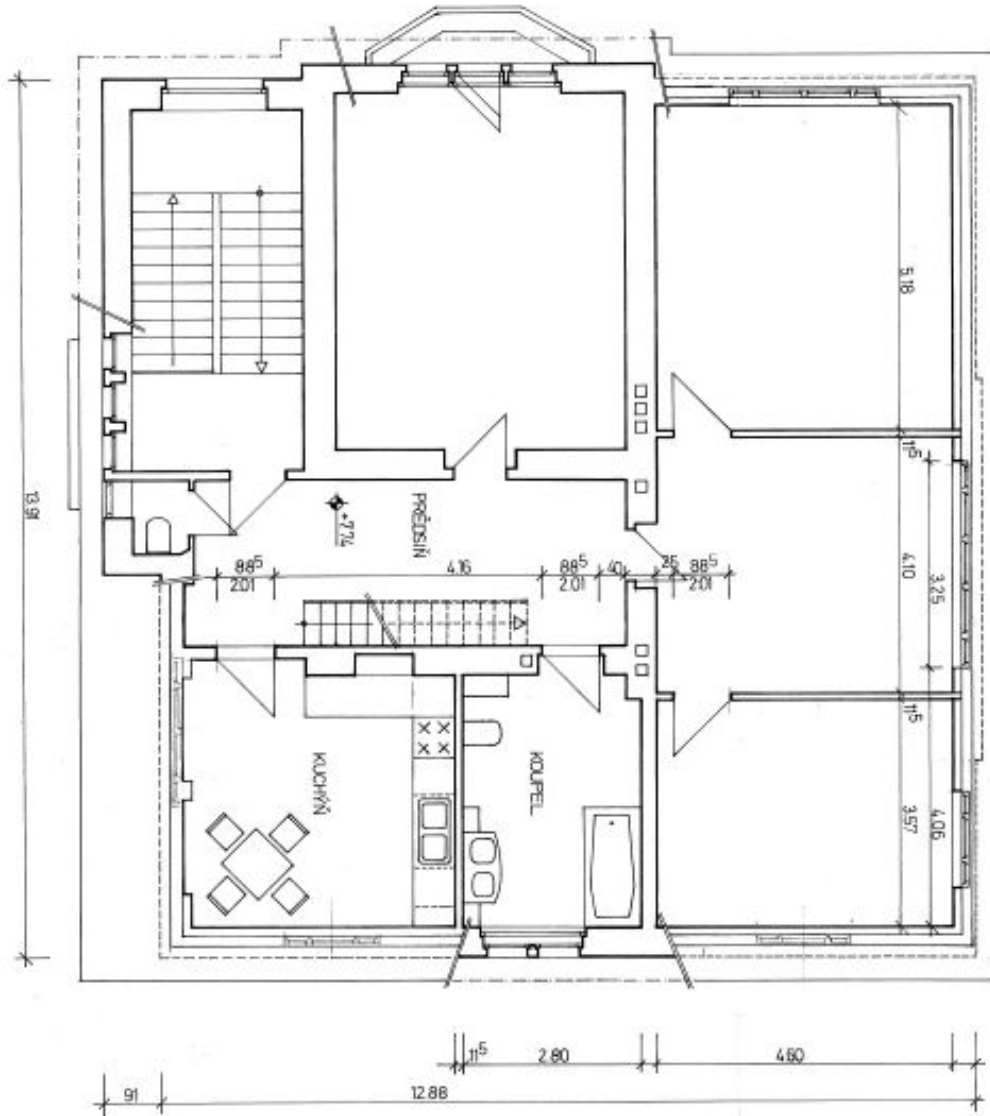




Apartment building

471 m<sup>2</sup>, Prague 5, Smíchov, Mošnova

Sold





## Apartment building

471 m<sup>2</sup>, Prague 5, Smíchov, Mošnova

**Sold**

