



House Six-bedroom (7+1)

292 m², Praha-západ, Jesenice, Na Ochoze

Sold





House Six-bedroom (7+1)

Sold292 m², Praha-západ, Jesenice, Na Ochoze

Total area	292 m ²
Plot	682 m ²
Foot print	293 m ²
Garden	389 m ²
Floor area	247 m ²
Terrace	45 m ²
Parking	-
Cellar	-
PENB	G
Reference number	20703

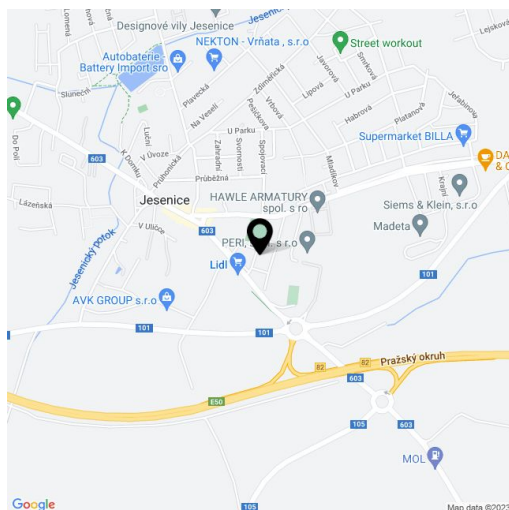
6-bedroom family house partially approved for commercial use, complete with garden and parking on the plot, located in the small town of Jesenice, within walking distance of basic amenities and only a 15-minute drive from Prague.

The ground floor consists of 4 rooms approved as offices, a living room, kitchen, bathroom with toilet, separate toilet and hall. The 1st residential floor features 2 bedrooms and a second bathroom with toilet; it is also prepared for a second kitchen..

Aluminum windows with triple safety glazing and shutters, tiles and carpets, aluminum entrance doors and solid interior doors, **alarm connected to the ARC**. The house is approved for both commercial and residential use and is suitable for reconstruction.

The house is located near supermarkets, schools, municipal office and playground, the village also has a fitness center and several restaurants. Průhonice with full amenities and a shopping area, an aquapark in Čestlice - only 10 minutes away by car.

Interior 247 m², built-up area 293 m², garden 389 m², plot 682 m².

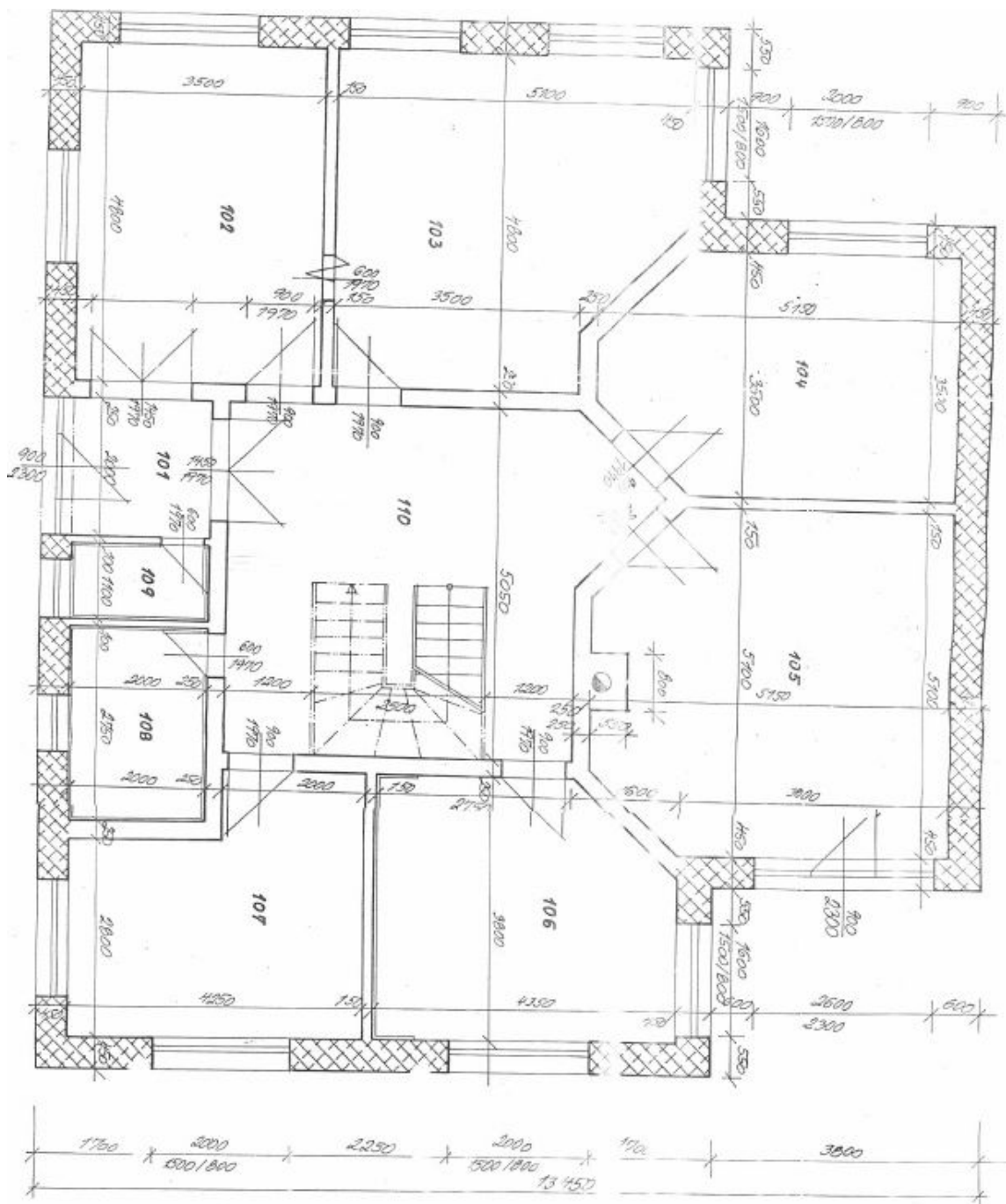




House Six-bedroom (7+1)

292 m², Praha-západ, Jesenice, Na Ochoze

Sold





House Six-bedroom (7+1)

292 m², Praha-západ, Jesenice, Na Ochoze

Sold

