



Apartment One-bedroom (2+kk)

Rented

58 m², Prague 5, Smíchov, Elišky Peškové





Apartment One-bedroom (2+kk)

Rented

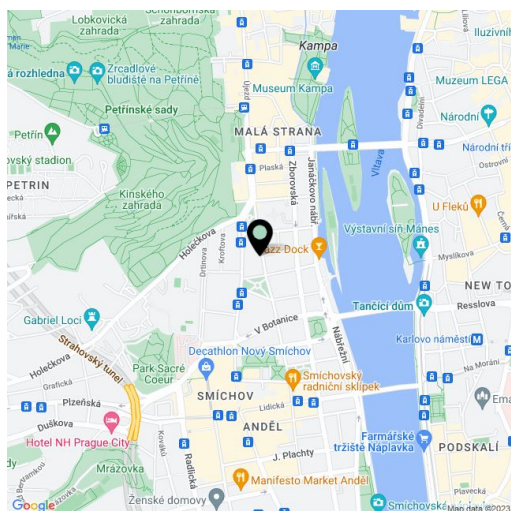
58 m², Prague 5, Smíchov, Elišky Peškové

Total area	58 m ²
Parking	-
Cellar	Yes
Service price	Deposit for common building charges and utilities CZK 4,000/month.
PENB	D
Reference number	20709
Available from	Immediately

Tastefully renovated and fully furnished apartment on the 2nd floor of a fully refurbished traditional building with an elevator and preserved historic details. Located on a quiet street next to a park, just a few minutes' walk from the Anděl commercial and entertainment center with a metro station and multiple tram links, only a few blocks from the Vltava riverbank.

The interior features a living/dining room with a fully fitted open plan kitchen, one bedroom with a fitted walk-in closet and working area, a shower bathroom with a toilet, a storage/laundry room, and an entry hall with plenty of storage space.

Nice views of the adjacent green square, large windows, wooden floors, tiles, security entry door, washer, dryer, dishwasher, fold out sofa, audio entry phone, basement storage unit. Faces south and east. Shared courtyard with a children's playground.



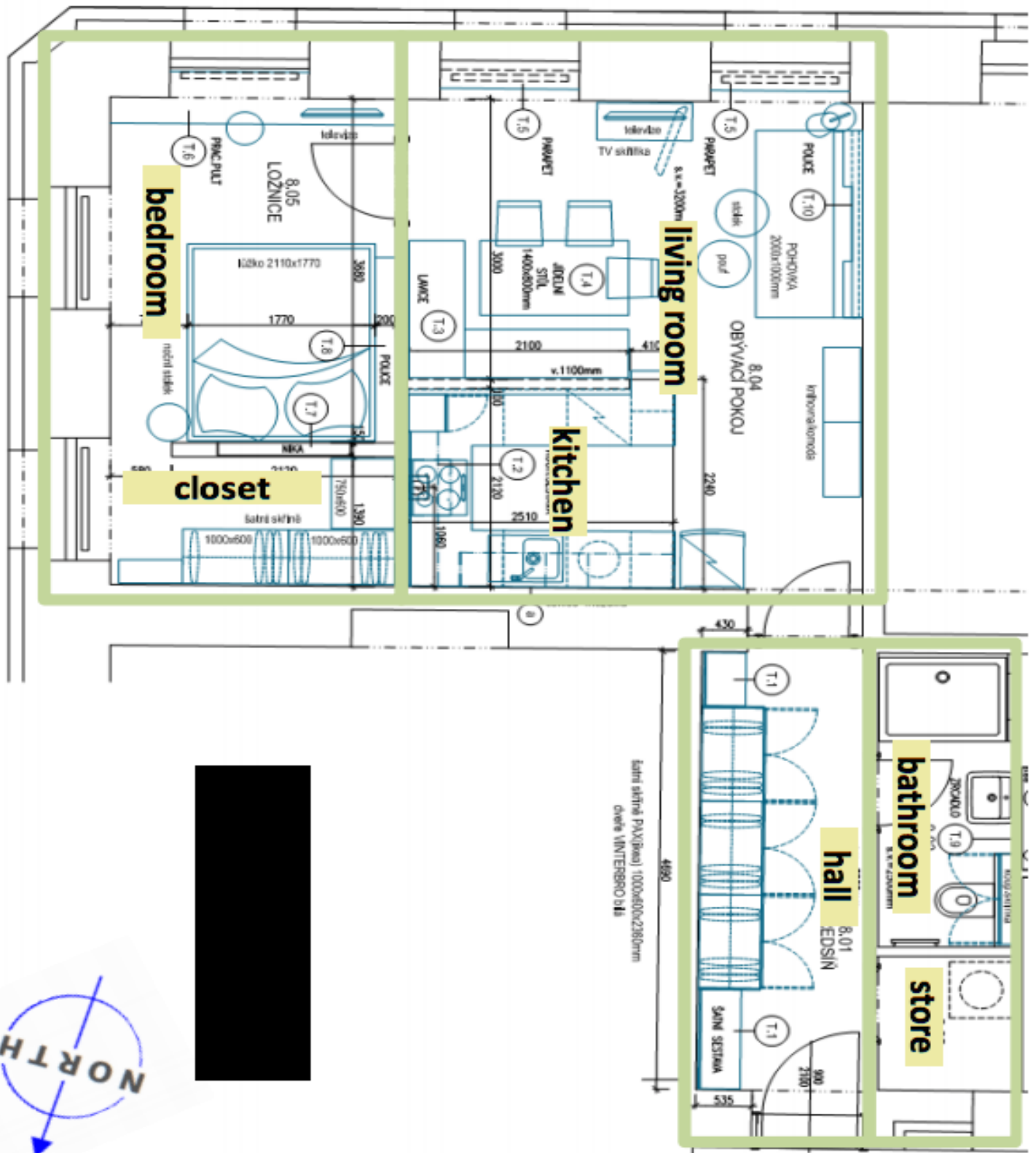
* Area of the unit according to the Civil Code. The area consists of the sum total area of the entire unit bounded by perimeter walls.



Apartment One-bedroom (2+kk)

Rented

58 m², Prague 5, Smíchov, Elišky Peškové

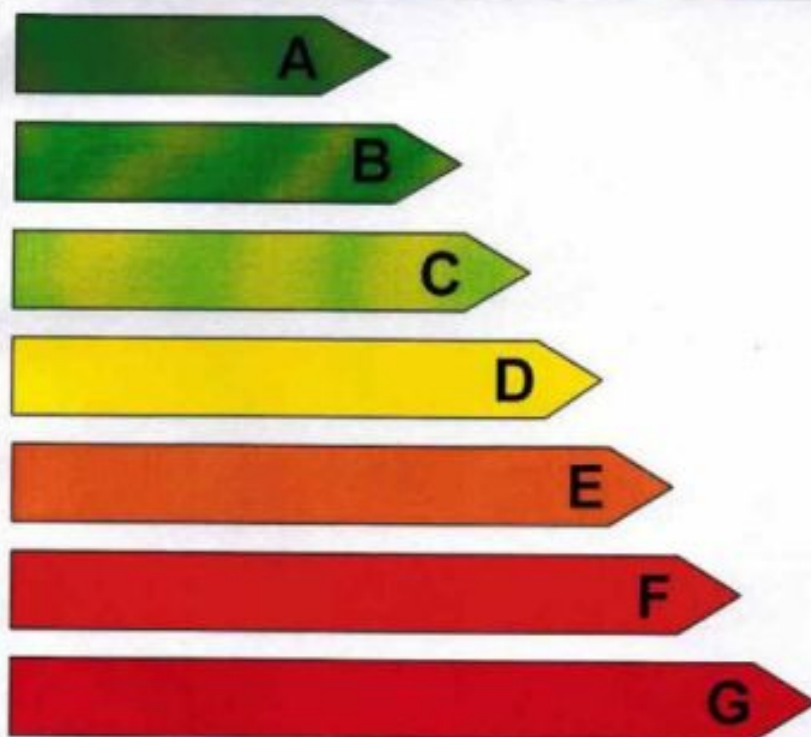




PRŮKAZ ENERGETICKÉ NÁROČNOSTI BUDOVY

Bytový dům s nebytovými prostory
Elišky Peškové 323/1Celková podlahová plocha: 1 654,7 m²

Hodnocení budovy

stávající
stavpo realizaci
doporučeníMěrná vypočtená roční spotřeba energie v kWh/m²rok

155

Celková vypočtená roční dodaná energie v GJ

924,16

Podíl dodané energie připadající na:

Vytápění	Chlazení	Větrání	Teplá voda	Osvětlení
81,0 %	0,0 %	0,0 %	11,0 %	7,0 %

Doba platnosti průkazu

do 12.7.2022

Průkaz vypracoval

Ing. Vít Venkrbec
Osvědčení č. 0555