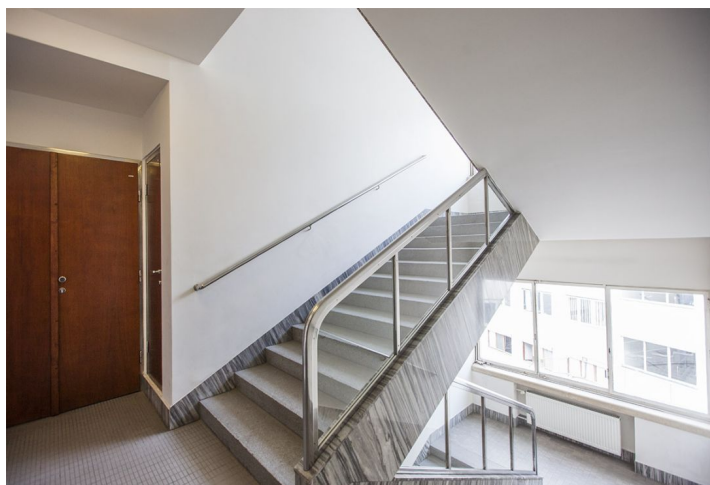




Office space

Prague 1, Staré Město, Na Příkopě

€ 13.00 / m² | CZK 327 / m²





Office space

Prague 1, Staré Město, Na Příkopě

€ 13.00 / m² | CZK 327 / m²

Service price	130 CZK monthly per m ²
Available area	194 m ²
Cellar	-
Parking	-
PENB	G
Reference number	20744

Office space for lease on the 3rd floor in an administrative complex from late functionalism, located at one of the attractive business addresses in Prague. The building consists of two houses with a facade and is connected by a modern passage with a glass-concrete vault. The building is dominated by impressive elements such as aerodynamically shaped glass entrances to the staircase.

Location:

Easily accessible by public transportation, Můstek (lines A, B) and Náměstí Republiky (line B) metro and trams are just steps away.

Features and Services:

The ground floor features a luxury shopping gallery with a café, the offices are situated on the above floors. Attractive entrance area with 24-hour security, energy efficient building management, magnetic cards access, up to date telecommunication connection, air-conditioning, CCTV, lifts.

Rental and service charges listed without VAT. Lessee pays no commission.

