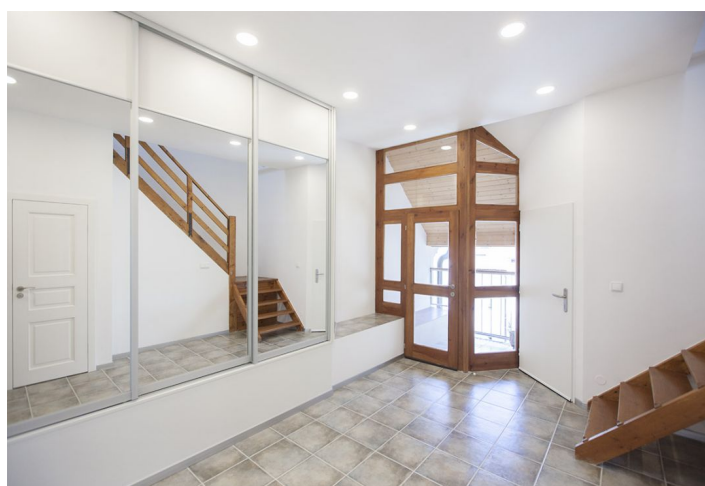
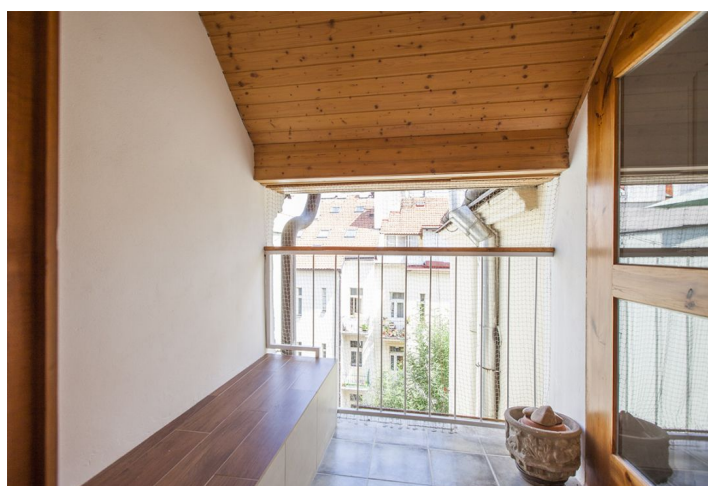




Apartment Two-bedroom (3+kk)

€ 2 347 | CZK 58 000

109 m², Prague 1, Staré Město, Pařížská





Apartment Two-bedroom (3+kk)

€ 2 347 | CZK 58 000

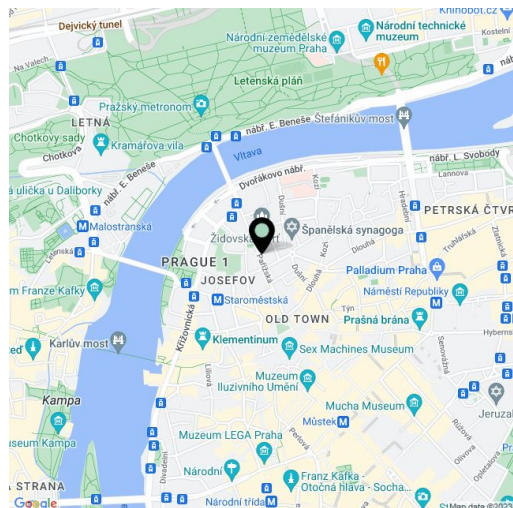
109 m², Prague 1, Staré Město, Pařížská

Total area	111 m ²
Floor area*	109 m ²
Loggia	2 m ²
Parking	-
Cellar	-
PENB	G
Reference number	20770
Available from	Immediately

Unique three-level attic "tower" flat with an enclosed balcony on one of the most prestigious addresses in Prague. This completely refurbished flat is on the fifth floor of a stately building with a lift, in the heart of the historic center, within instant reach of luxury boutiques, shops and restaurants. Located a minute walk from the Old Town Square and the Vltava riverbank, within easy reach of most Prague historic sights.

The lower level features a fully fitted and equipped kitchen open to the dining / living room, a guest toilet, and a hall with built-in wardrobes and access to the enclosed balcony facing the courtyard. The second level includes a spacious bedroom with beautiful views of Pařížská street, the Petřín Hill and the Old Town roofs and spires, plus a woden staircase leading to the "tower" office. There is one more bedroom with built-in wardrobes and storage, bathroom (walk-in shower, tub, toilet), and laundry room.

Preserved original details, new kitchen and bathroom, wooden floors, tiles, wooden doors, gas boiler, washer, dryer, dishwasher. Parking possible in the nearby Intercontinental Hotel. Common building charges and water around CZK 1000/month for two persons. Gas and electricity are billed separately (transfer to the tenant).



* Area of the unit according to the Civil Code. The area consists of the sum total area of the entire unit bounded by perimeter walls.