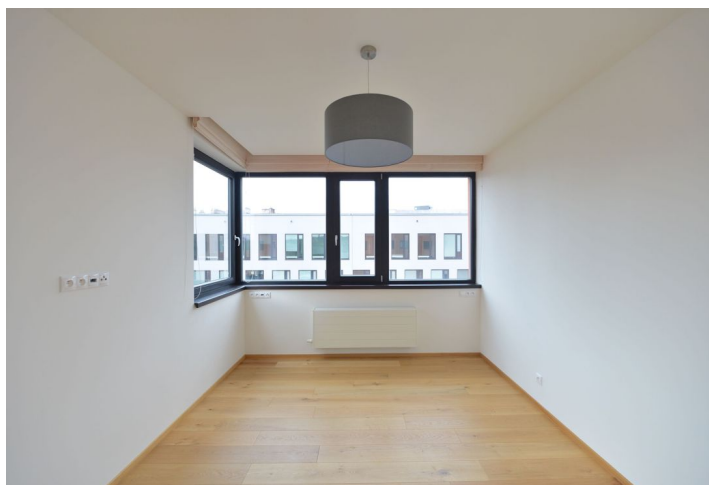




Apartment Two-bedroom (3+kk)

Rented

96 m², Prague 7, Holešovice, V Přístavu





Apartment Two-bedroom (3+kk)

Rented

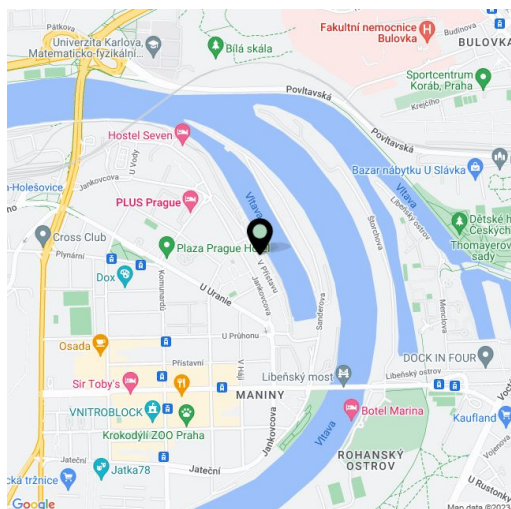
96 m², Prague 7, Holešovice, V Přístavu

Total area	100 m ²
Floor area*	96 m ²
Loggia	4 m ²
Parking	Two garage spaces included.
Garage	Yes
Cellar	Yes
PENB	G
Reference number	20834
Available from	Immediately

Fully refurbished high standard 2-bedroom 2-bathroom flat with an enclosed terrace, on the fifth floor in the new Prague Marina residential project with reception and underground parking. Benefiting from unobstructed views of the Vltava river and green surroundings, located right on the riverbank in the fast growing Prague 7 district, with full amenities within easy reach and quick connections to the city center.

The interior features a spacious entry hall with built-in wardrobes, living room with a fully fitted open plan kitchen and access to the enclosed balcony, master bedroom with an en-suite bathroom (bath tub, toilet, built-in TV), one more bedroom, and a shower bathroom with toilet.

Wooden floors, carpets, security entry door, outdoor electric blinds, washing machine, dishwasher, video entry phone, basement storage unit. Two garage parking spaces included. Common building charges, deposit for heating and parking CZK 6500/month. Electricity is paid separately.



* Area of the unit according to the Civil Code. The area consists of the sum total area of the entire unit bounded by perimeter walls.