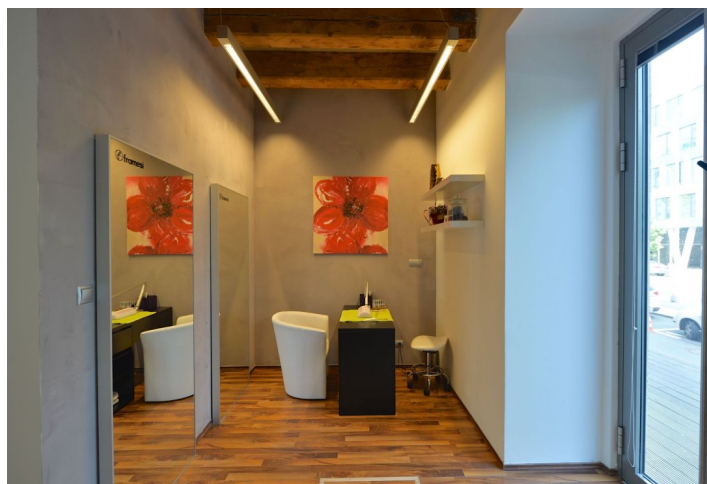




Office space

Rented

Prague 7, Holešovice, Jankovcova/U Uranie





Office space

Rented

Prague 7, Holešovice, Jankovcova/U Uranie

Service price	140 CZK monthly per m ²
Available area	116 m ²
Cellar	-
Parking	EUR 120 / ps / month
PENB	G
Reference number	20849

Office space for lease on the ground floor in a unique project that features combination of modern office architecture with renovated historic buildings. The attractive, well equipped offices have large windows providing wonderful views of the Vltava River.

Location:

Close to the Metro Nádraží Holešovice, Vltavská (line C) and Palmovka (line B), tram stops (Dělnická or Ortenovo náměstí) are 3 minutes walk and provide the connection to the building. Number of primary transportation routes, including access to the D1 and D8 (Berlin) highways.

Features and Services:

- Carpeted raised floor system
- Internal window shading
- Air-conditioning
- Building management system (BMS)
- CCTV for garages and external areas
- Cafés, restaurant
- Storage
- Fire alarm system
- Sprinklers
- Security surveillance systems for monitoring garage and outdoor areas
- Card access system for entering parking lot and building
- Underground parking

Rental and service charges listed without VAT. Lessee pays no commission.

