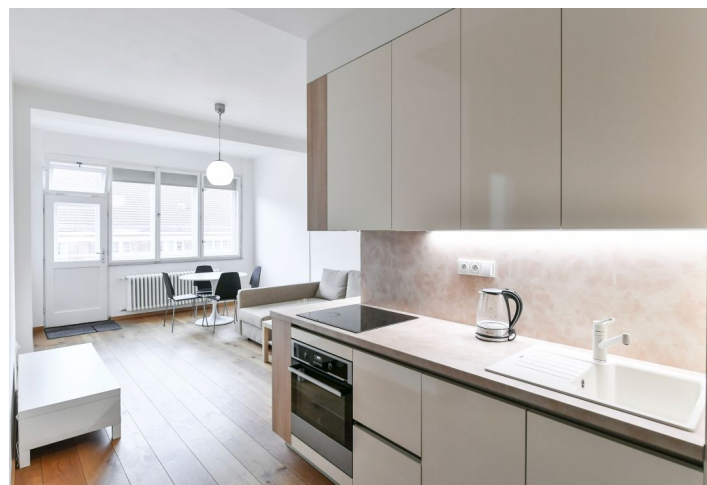




Apartment Two-bedroom (3+kk)

Rented

68.2 m², Prague 3, Vinohrady, Jičínská





Apartment Two-bedroom (3+kk)

Rented

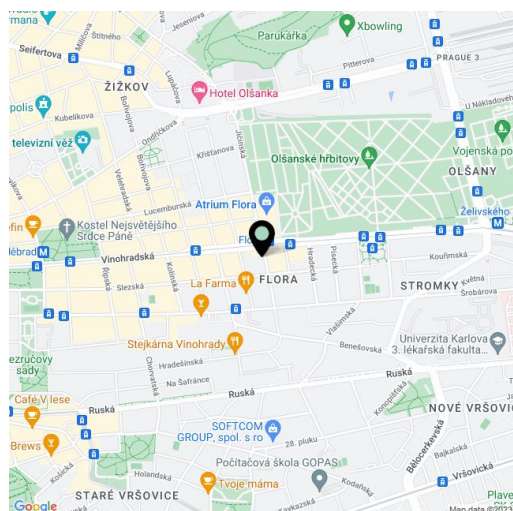
68.2 m², Prague 3, Vinohrady, Jičínská

Total area	82 m ²
Floor area*	68 m ²
Balcony	1 m ²
Terrace	13 m ²
Parking	-
Cellar	Yes
PENB	E
Reference number	20989
Available from	Immediately

Bright 2-bedroom fully furnished flat with a terrace, balcony and a shared gym and roof terrace, situated on the sixth top floor of a completely renovated Functionalist corner building with instant access to Flora metro station, line A. Conveniently located in the popular Vinohrady residential neighborhood, 100 m from the Flora shopping mall, with full amenities in the area. The building amenities include an elegant lobby, a shared roof terrace with a seating and fitness room in the basement.

The interior features a spacious living room with dining area and terrace access, a fully fitted open kitchen, two bedrooms - one with a small balcony, bathroom with tub, a separate toilet, and an open entry hall.

Large windows providing plenty of natural light, high ceilings, wooden floors, security entry door, quality equipment, washer, dryer, dishwasher, cellar. Parking can be arranged in the Flora shopping mall. Common building charges, fitness room, water and heating around CZK 3,000/person/month, each other person CZK 1,000/month. Electricity is billed separately.



* Area of the unit according to the Civil Code. The area consists of the sum total area of the entire unit bounded by perimeter walls.



Apartment Two-bedroom (3+kk)

Rented

68.2 m², Prague 3, Vinohrady, Jičínská

