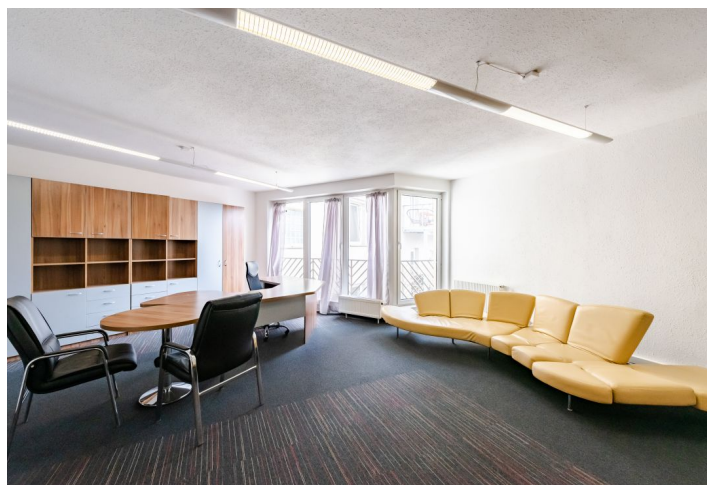
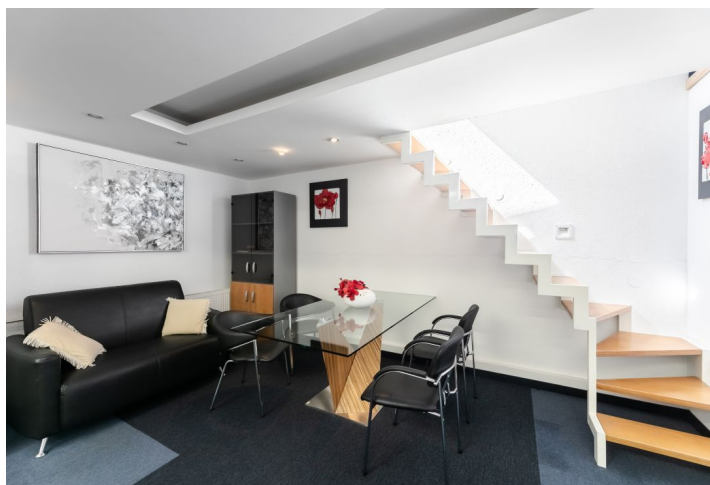
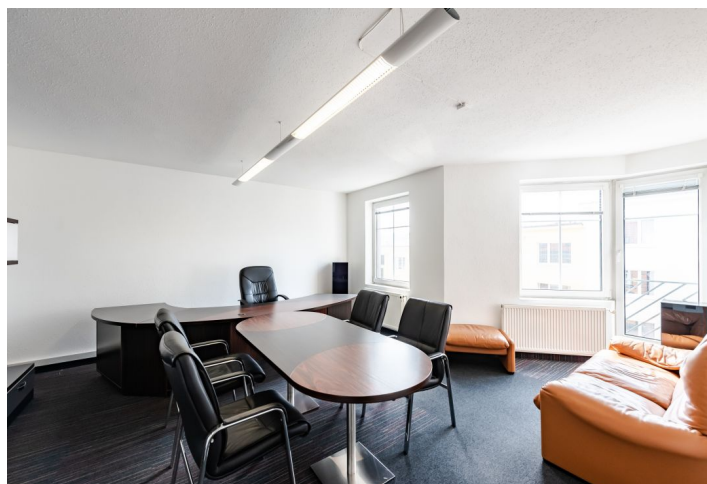




Office building

Prague 6, Břevnov, Radimova

Rented



**Office building**

Prague 6, Břevnov, Radimova

Rented

Service price	34 CZK monthly per m ²
Total building area	1 173 m ²
Tenant consumption	—
Parking	3 500 CZK
Parking service charges	—
Parking ratio	—
Certification	—
PENB	C
Reference number	21013

Administrative building with office and retail premises for sublease located in an attractive part of Prague 6 – Břevnov.

Location:

Kajetánka Park and Břevnov Monastery are close to the building, which is located just a few minutes' walk from a bus stop. One of the main advantages of this building is easy access to the city center from its location.

Features and services:

- Air-conditioning in all units
- Gas heating
- Tiles and carpeting
- Openable windows
- Lift
- Walkable roof
- Parking in the underground garage

Rental and service charges are listed without VAT. Lessee pays no commission.





