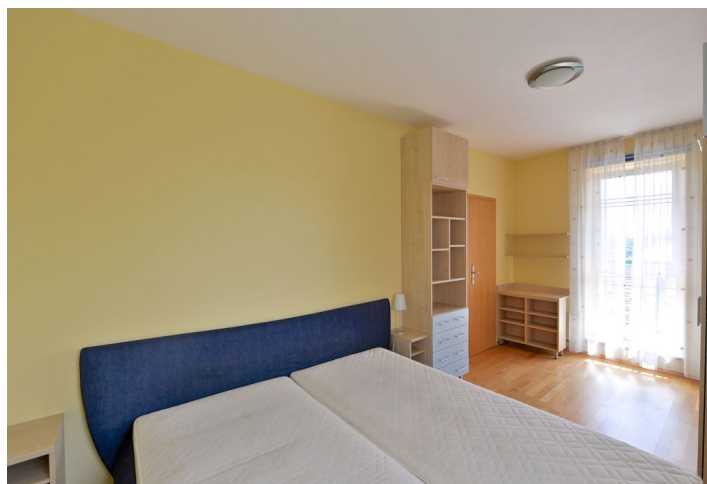




Apartment Two-bedroom (3+kk)

Rented

67 m², Praha 4, Krč, Nad Ryšánkou





Apartment Two-bedroom (3+kk)

Rented

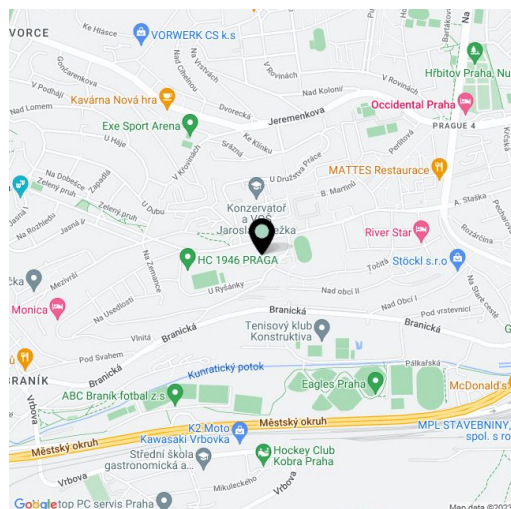
67 m², Praha 4, Krč, Nad Ryšánkou

Total area	75 m ²
Floor area*	67 m ²
Balcony	8 m ²
Parking	Garage parking.
Garage	Yes
Cellar	Yes
PENB	G
Reference number	21025
Available from	Immediately

Furnished 2-bedroom flat with an 8 m² balcony, situated on the first floor of a residential building with lift and parking. Located in a quiet residential neighborhood in Krč, convenient to the Prague 4 business center and the PBS international school. A few bus stops to the Vltava River and Budějovická metro station, line C, with full amenities in the vicinity and quick access to the city center.

The interior includes two bedrooms (West and South oriented), living / dining room with a fully fitted open kitchen and access to the South facing balcony with nice views, bathroom with bathtub, toilet, and entry hall with built-in storage.

Third floor views (the building is set in a slope), parquet floors, security entry door, French windows, washer, dishwasher, microwave oven, Internet, cellar, camera system. One garage parking space included. Common building charges and deposit for utilities CZK 4000/month.



* Area of the unit according to the Civil Code. The area consists of the sum total area of the entire unit bounded by perimeter walls.