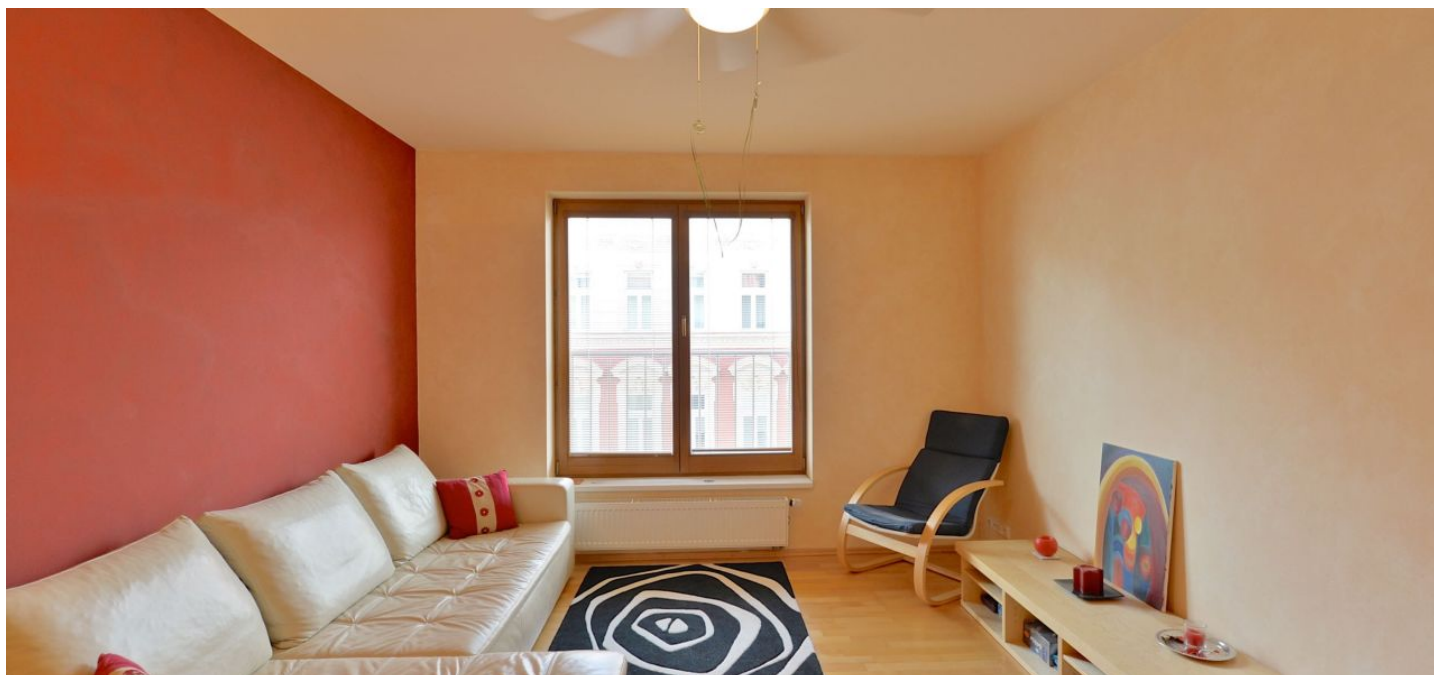




Apartment Two-bedroom (3+kk)

Rented

85 m², Praha 2, Vinohrady, Lublaňská





Apartment Two-bedroom (3+kk)

Rented

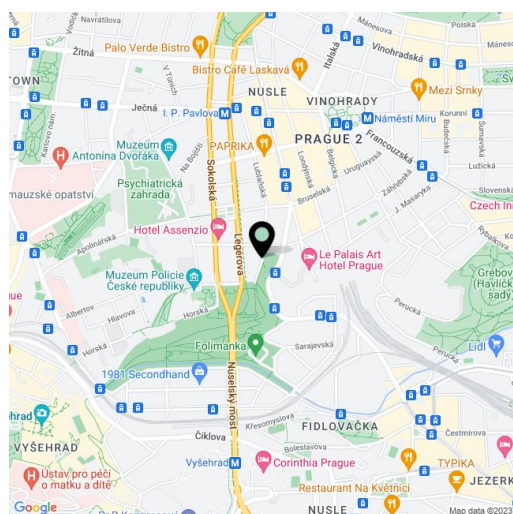
85 m², Praha 2, Vinohrady, Lublaňská

| | |
|------------------|-------------------|
| Total area | 85 m ² |
| Parking | - |
| Cellar | - |
| PENB | G |
| Reference number | 21043 |
| Available from | Immediately |

Fully furnished 2-bedroom flat situated on the fifth floor of a modern residence in the highly sought after residential neighborhood of Vinohrady. Located just a few blocks from tram stops and metro stations I.P. Pavlova and Náměstí Míru with quick access to the city center and full amenities in the area, within walking distance of Folimanka Park.

The flat includes two bedrooms, living room with a fully fitted open kitchen and dining area, bathroom with tub, toilet with bidet, walk-in closet, and entry hall.

Wooden floating floors, tiles, security entry door, French windows, blinds, central heating, washer, dryer, Miele kitchen appliances, Liebherr fridge/freezer, dishes and kitchenware, vacuum cleaner, iron and ironing board, Internet, UPC cable, video entry phone, lift. Common building charges, water and heating around CZK 3500/month. Electricity will be transferred to the tenant (around CZK 1500/month).



* Area of the unit according to the Civil Code. The area consists of the sum total area of the entire unit bounded by perimeter walls.