



Office building

Prague 5, Smíchov, náměstí Kinských

Rented



**Office building**

Prague 5, Smíchov, náměstí Kinských

Rented

Service price	75 CZK monthly per m ²
Total building area	1 336 m ²
Tenant consumption	—
Parking	-
Parking service charges	—
Parking ratio	—
Certification	—
PENB	G
Reference number	21072

Historical building with office premises for lease located on the border of Mala Strana and Smíchov, in close vicinity of the Kinsky Gardens.

Location:

Excellent accessibility by public transportation and by car – within walking distance of Anděl (line B) metro station, tram stops directly in front of the building; connected to the Prague ring road. Full amenities in the neighborhood.

Facilities and services:

- Central reception
- Elevator
- Openable windows
- Air-conditioning
- System data and telephone wiring
- Professional property management
- Possibility of paid public parking on the square

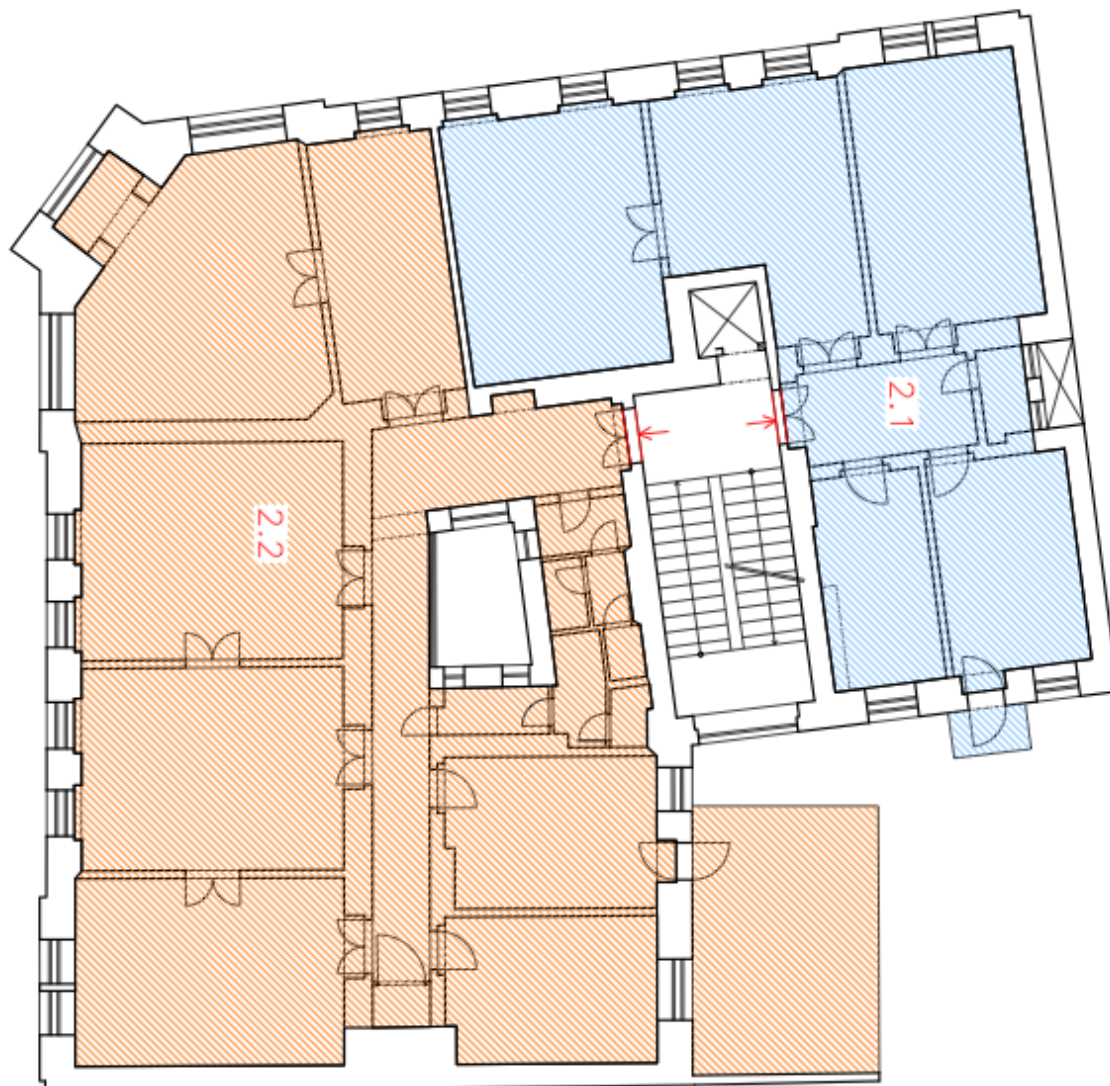
Rental and service charges are listed without VAT. Lessee pays no commission.



Office building

Prague 5, Smíchov, náměstí Kinských

Rented

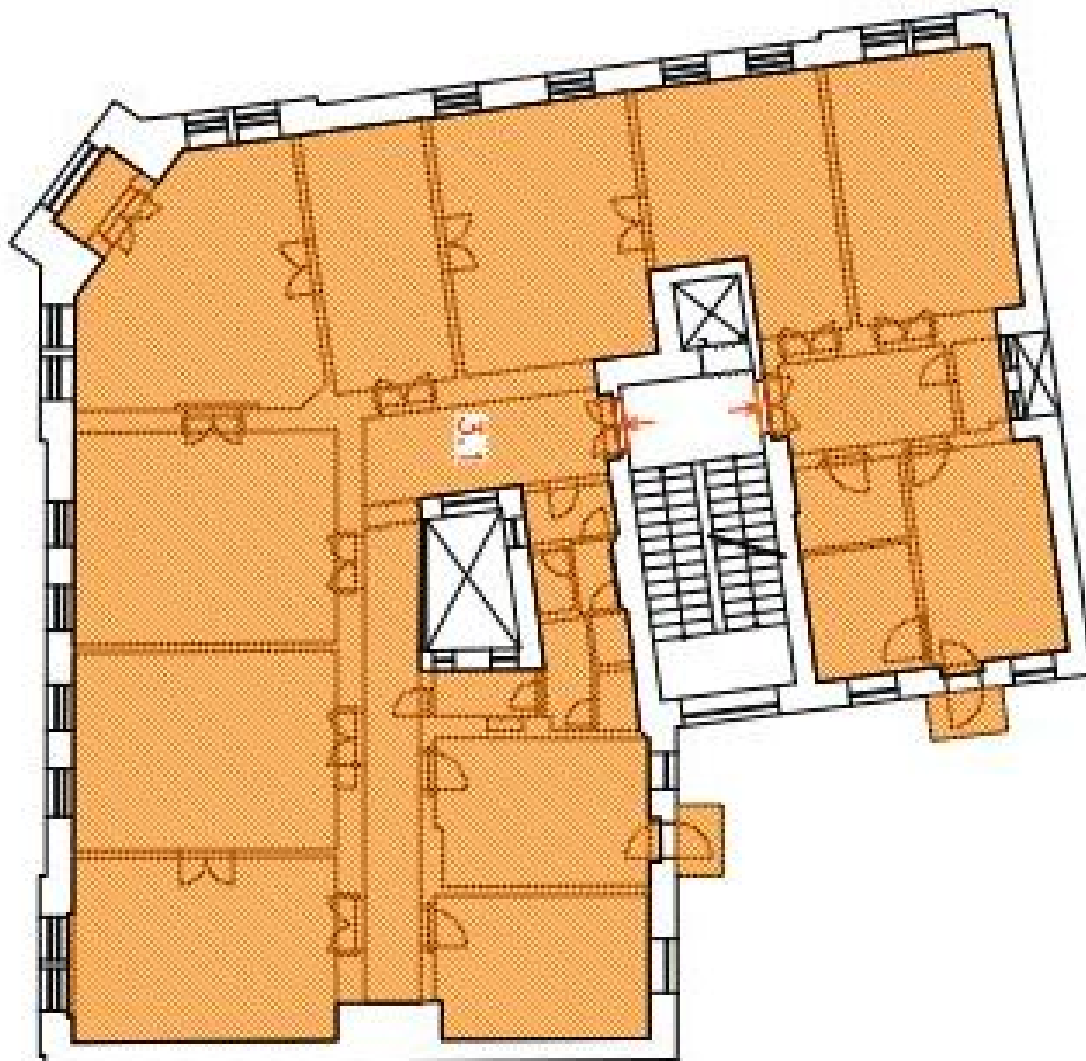




Office building

Prague 5, Smíchov, náměstí Kinských

Rented





Office building

Prague 5, Smíchov, náměstí Kinských

Rented

