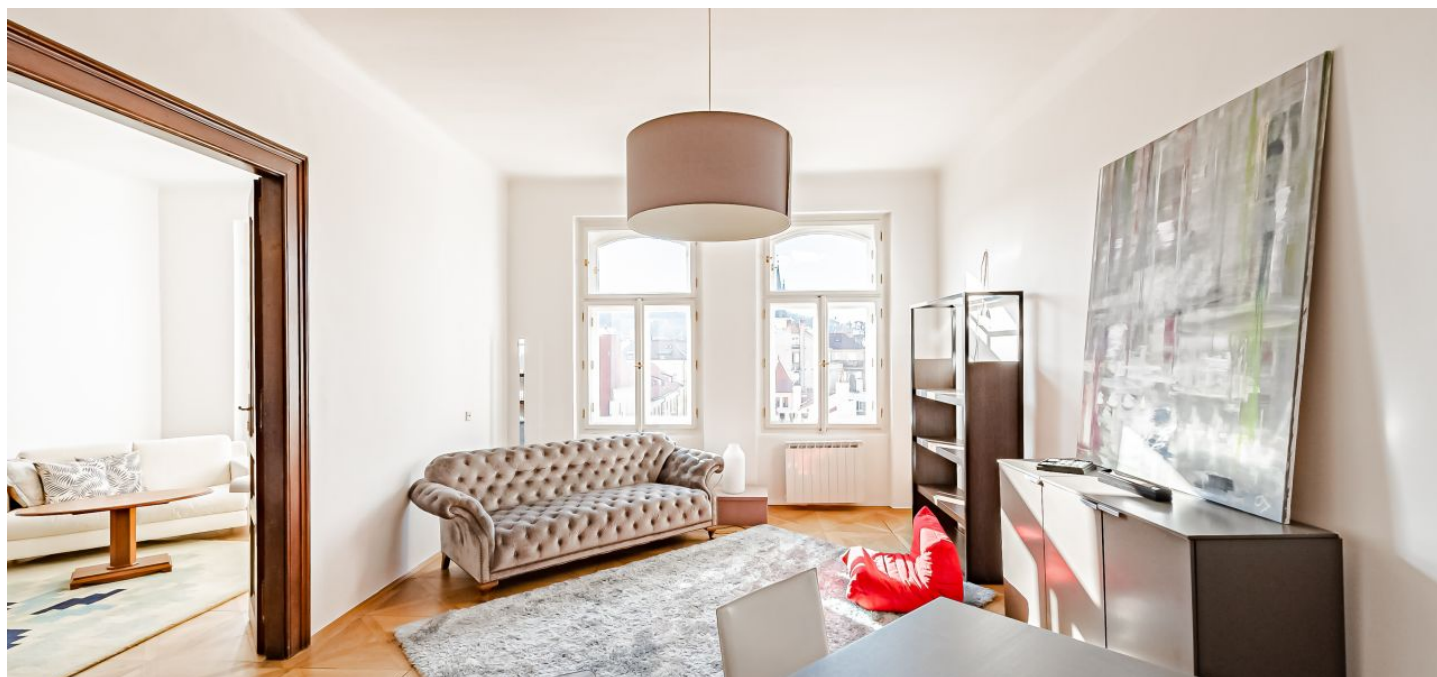




## Apartment Two-bedroom (3+kk)

Rented

93 m<sup>2</sup>, Prague 1, Staré Město, Liliová





## Apartment Two-bedroom (3+kk)

Rented

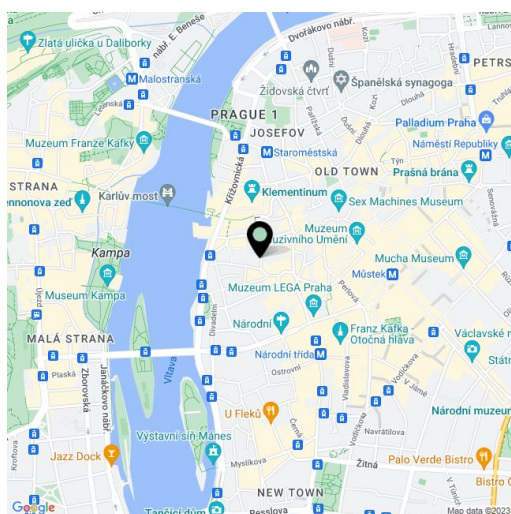
93 m<sup>2</sup>, Prague 1, Staré Město, Liliová

Total area	93 m <sup>2</sup>
Parking	-
Cellar	-
PENB	G
Reference number	21087
Available from	Immediately

Cosy refurbished furnished 2-bedroom flat with wonderful views of Petrin Hill and the Prague Castle. Located on the 4th floor of a building with a lift, in the very center of historic Prague, just moments from the Old Town Square, the Charles Bridge, and numerous historic sights, within easy reach of quality amenities, dining, shopping, cafes, cultural venues, and more. Within walking distance of the Staroměstská and Národní třída tram and metro stops, and the Můstek metro station at the bottom of Wenceslas Square.

The flat has living room, fully equipped kitchen situated in the spacious entry hall, 2 bedrooms (one of them with separated storage space), bathroom with a shower, separate toilet, and a pantry.

Preserved original features, wooden and parquet floors, wooden double doors, washer, Internet connection. The apartment can be furnished or unfurnished. Common building charges CZK 2,000/month. Electricity will be transferred to the tenant's name.



\* Area of the unit according to the Civil Code. The area consists of the sum total area of the entire unit bounded by perimeter walls.