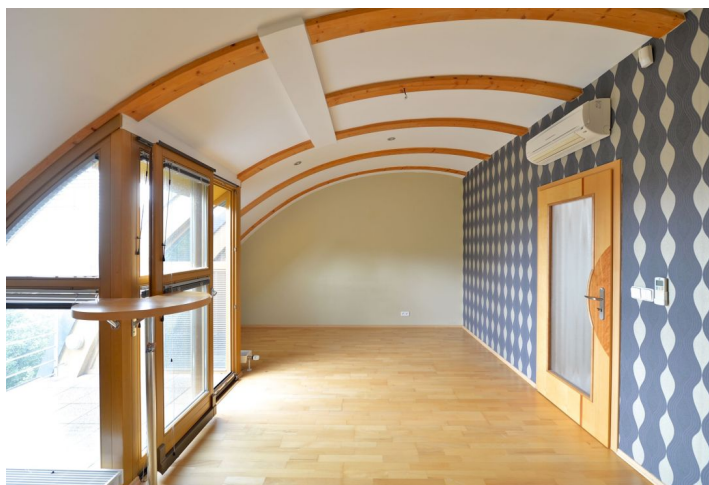




Apartment Three-bedroom (4+kk)

Rented

132 m², Prague 4, Michle, Na Sychrově





Apartment Three-bedroom (4+kk)

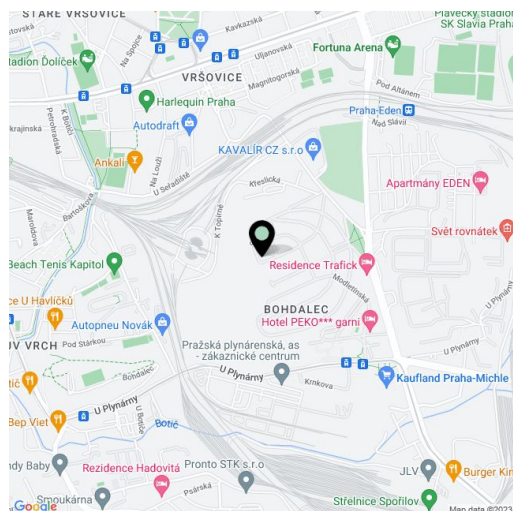
Rented132 m², Prague 4, Michle, Na Sychrově

Total area	160 m ²
Floor area*	132 m ²
Terrace	28 m ²
Parking	Parking included.
Garage	Yes
Cellar	Yes
PENB	G
Reference number	21097
Available from	Immediately

This three-level air-conditioned 3-bedroom 2-bathroom flat with a 24 m² terrace and two balconies provides beautiful views of Prague. Situated in a new gated residential project with parking and a landscaped garden with a children's playground. Located in a quiet residential neighborhood within walking distance of the Bohdalecký forest, with good access to the city center. Well accessible by bus, tram and car.

First level: living room with a fully fitted open kitchen and access to the terrace, walk-in closet, guest toilet, storage room, entrance hall. Second level: two bedrooms with built-in wardrobes and a shared balcony, bathroom (tub, toilet, heated floor). Third level: attic bedroom with a balcony, bathroom (walk-in shower, toilet), utility area.

Slow burning stove, wooden and tile floors, built-in wardrobes, blinds, gas boiler, washing machine, dishwasher, microwave oven, satellite TV connection, alarm, basement storage unit. One garage parking space and one outdoor space included. Common building charges and deposit for utilities around CZK 5000 per month.



* Area of the unit according to the Civil Code. The area consists of the sum total area of the entire unit bounded by perimeter walls.