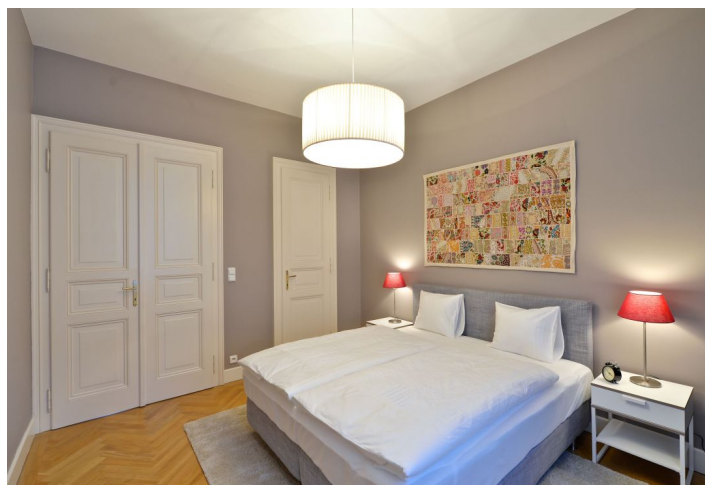




## Apartment One-bedroom (2+1)

Rented

72 m<sup>2</sup>, Prague 1, Nové Město, Truhlářská





## Apartment One-bedroom (2+1)

Rented

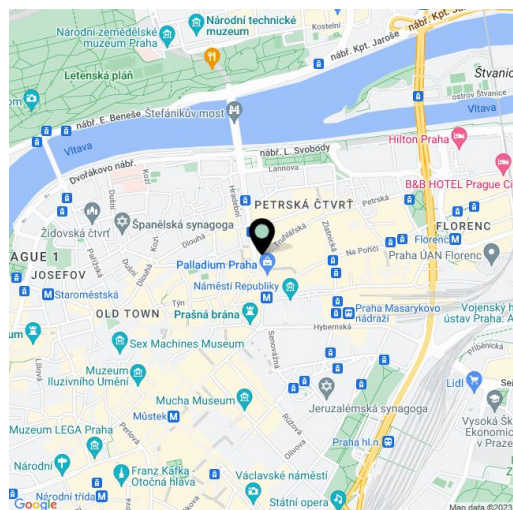
72 m<sup>2</sup>, Prague 1, Nové Město, Truhlářská

Total area	72 m <sup>2</sup>
Parking	-
Cellar	-
Service price	Common building charges and utilities CZK 6,000/month for two persons.
PENB	D
Reference number	21101
Available from	Immediately

This fully refurbished, furnished apartment in a classic late 19th century building has been superbly renovated with attention to detail and retrofitted with an elevator. Offering modern living, high quality finishings, and a lively central location, the apartment is located on a quiet street mere steps from Náměstí Republiky Square with the Palladium shopping mall, tram stops, and a metro station nearby, within walking distance of the Old Town and Wenceslas squares.

The apartment has a fully fitted eat-in kitchen, a living room with a fitted walk-in closet and an en-suite bathroom with a bathtub and window, a separate toilet, a closet, and an entry hall.

Preserved original features, high ceilings, large windows, hardwood parquet floors throughout, tiles in the bathroom, toilet and storage room, interior double doors, security entry door, gas heating system and boiler. Fully furnished kitchen with all utensils, dishwasher, fridge, freezer, stove, oven, hood, toaster, kettle, and Nespresso machine. TV with SAT reception, WiFi Internet, washing machine, laptop-size safe.



\* Area of the unit according to the Civil Code. The area consists of the sum total area of the entire unit bounded by perimeter walls.



## Apartment One-bedroom (2+1)

Rented

72 m<sup>2</sup>, Prague 1, Nové Město, Truhlářská

