



Office building

Prague 10, Práčská

Rented





Office building

Prague 10, Práčská

Rented

Service price	70 CZK monthly per m ²
Total building area	1 518 m ²
Tenant consumption	—
Parking	1 900 CZK
Parking service charges	—
Parking ratio	—
Certification	—
PENB	G
Reference number	21216

Administrative building with office and retail premises for lease in Prague 10 - Záběhlice.

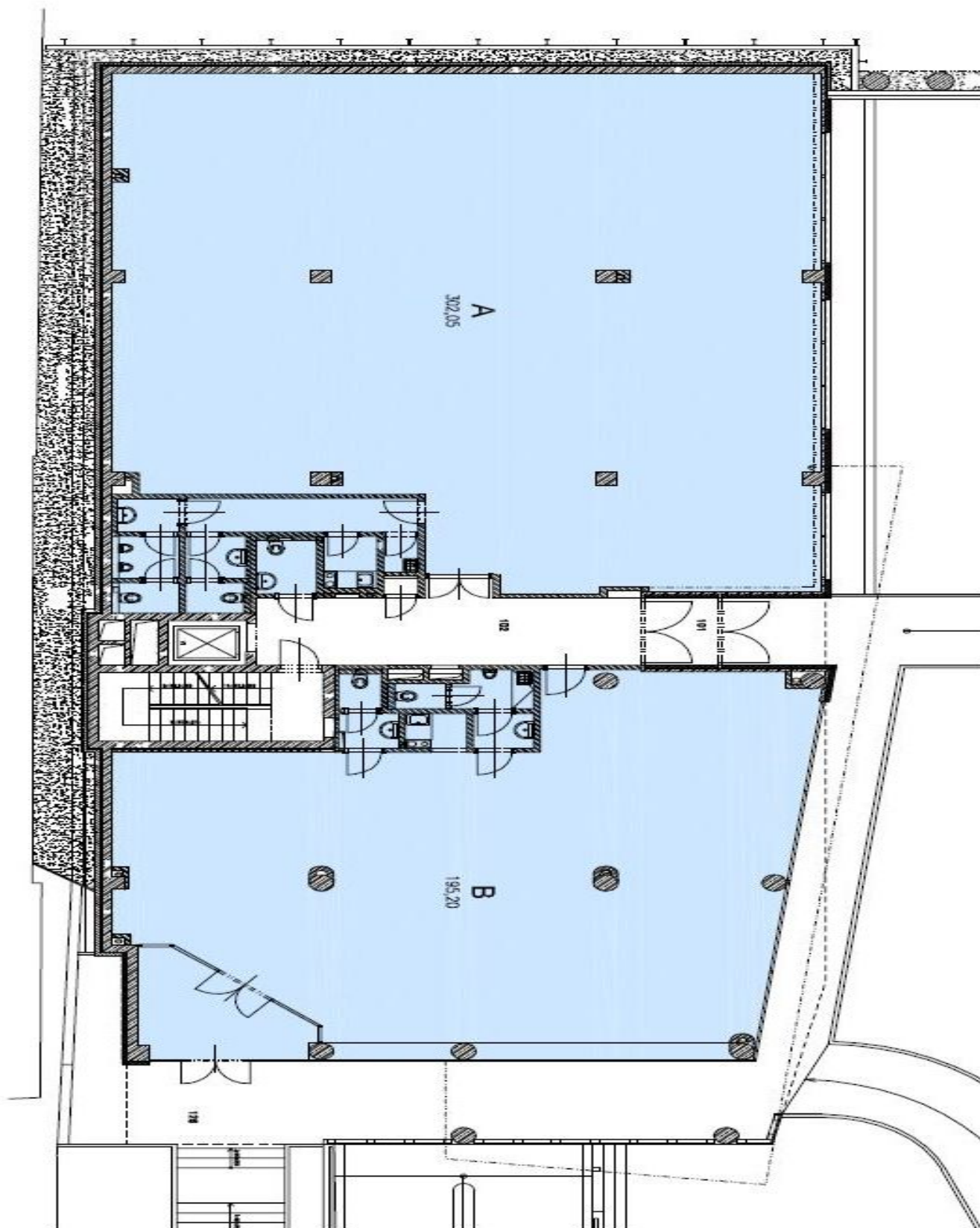
Location:

The building is situated in a part of the city that is easily accessible by car and public transport. In the immediate vicinity of the building there are bus stops. One of the main advantages of the location is that it is near the city ring road (south link).

Features and services:

The building features openable windows and carpeted floors; the premises are bright and boast nice views of the surroundings. There is a lift linking the underground parking and single floors. 3 parking spaces in front of the retail premises of the building.

Rent from **CZK 300/m²/month**. Rental and service charges are listed without VAT. Lessee pays no commission.

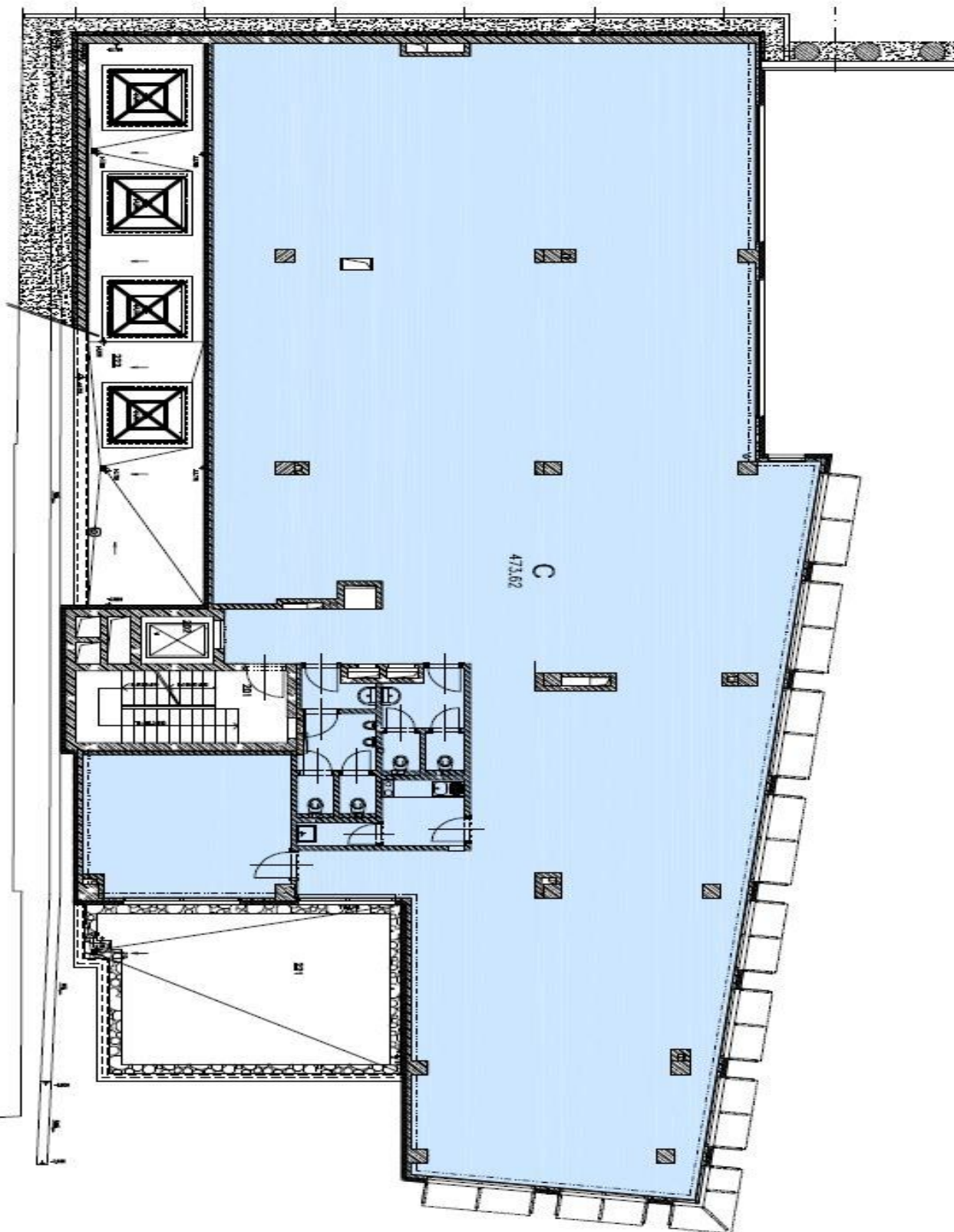


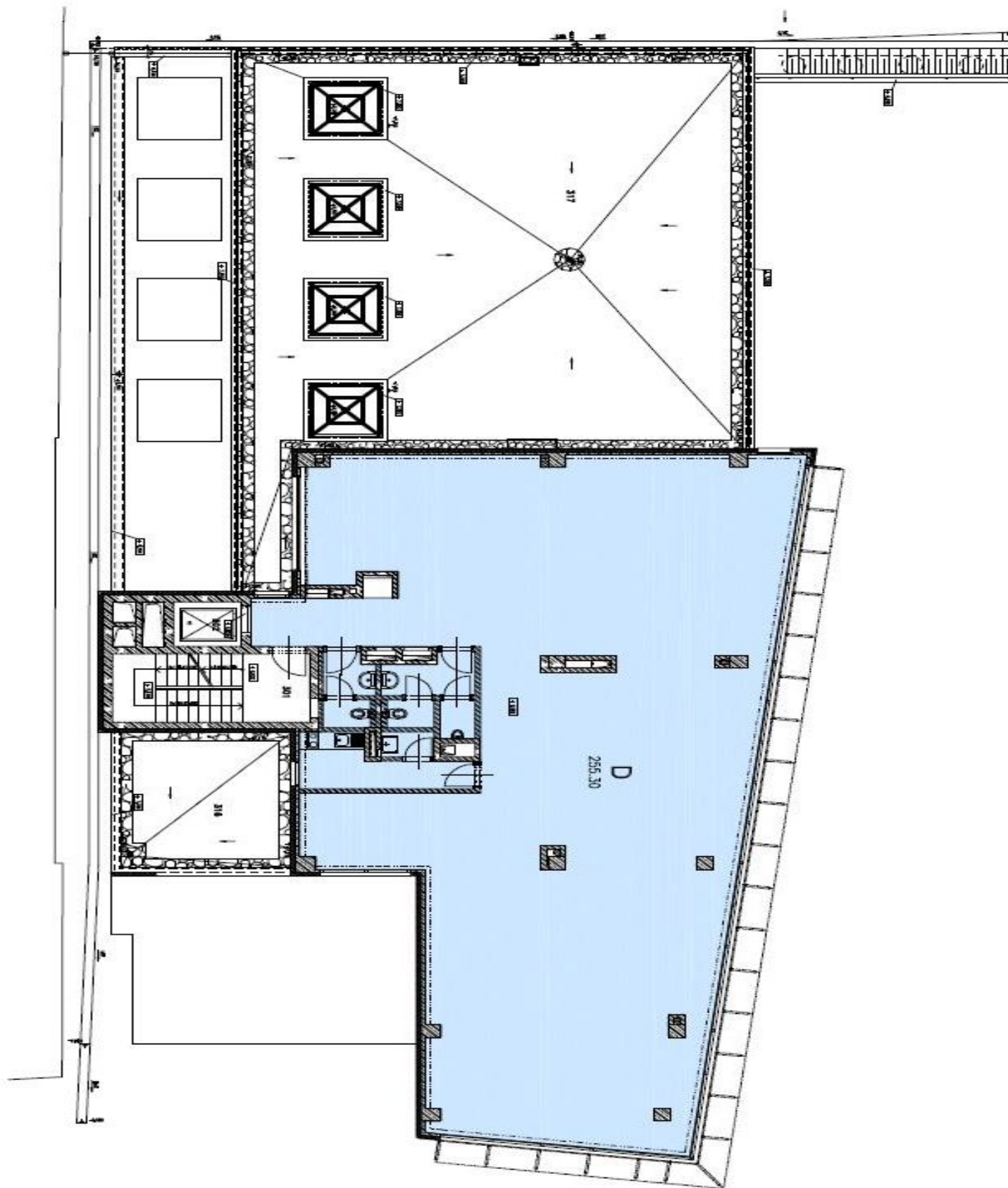


Office building

Prague 10, Práčská

Rented







Office building

Prague 10, Práčská

Rented

