



## Apartment One-bedroom (2+kk)

Sold

77 m<sup>2</sup>, Prague 1, Nové Město, Příčná





## Apartment One-bedroom (2+kk)

**Sold**77 m<sup>2</sup>, Prague 1, Nové Město, Příčná

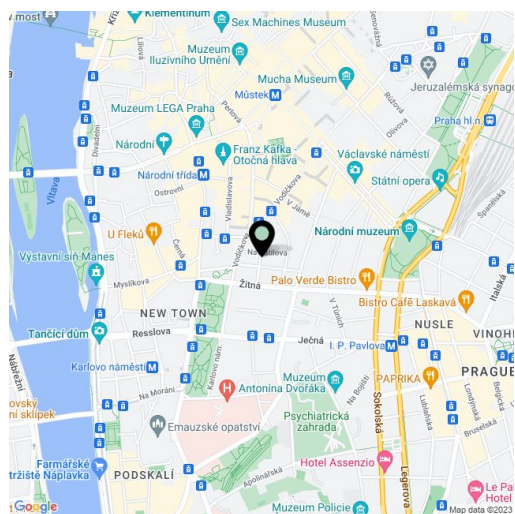
|                  |                   |
|------------------|-------------------|
| Total area       | 77 m <sup>2</sup> |
| Parking          | -                 |
| Cellar           | Yes               |
| PENB             | C                 |
| Reference number | 21320             |

New 1-bedroom apartment on the 2nd floor of a completely renovated Functionalist apartment building with a cellar and 11 garage parking spaces. It is located in the city center on a quiet street between the Můstek and Karlovo náměstí metro stations. The building was carefully renovated with an emphasis on high quality materials, attention to detail, preserved original features, and the addition of a reception. The project offers a total of 19 apartments of various sizes and layouts.

The apartment consists of a northwest-facing living room with a kitchen, a west-facing bedroom, a bathroom, a utility room, and a hallway. The apartment is offered in the state of **white walls**, i.e. before the completion of the final surfaces such as floors, tiles, or kitchen, with the possibility of being finished by the general contractor at an extra cost.

The building is located near the Novoměstská radnice town hall, just a 3-minute walk from the metro and tram stops on Karlovo náměstí square and 7 minutes from the Můstek metro station on Wenceslas Square. The location offers complete urban amenities and plenty of cultural, social, and sports activities.

Interior 77.15 m<sup>2</sup>.



\* Area of the unit according to the Civil Code. The area consists of the sum total area of the entire unit bounded by perimeter walls.



## Apartment One-bedroom (2+kk)

Sold

77 m<sup>2</sup>, Prague 1, Nové Město, Příčná

# VITRAGE HOUSE

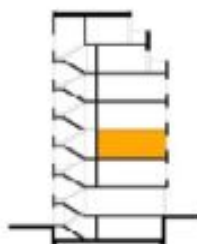
BYT 3.08 2+KK



### LEGENDA MÍSTNOSTÍ

|    |                   |                      |
|----|-------------------|----------------------|
| 01 | HALA              | 14,10 m <sup>2</sup> |
| 02 | OBÝVACÍ POKOJ, KK | 46,52 m <sup>2</sup> |
| 03 | LOŽNICE           | 12,51 m <sup>2</sup> |
| 04 | KOUPELNA          | 6,32 m <sup>2</sup>  |

UŽITNÁ PLOCHA BYTU 79,25 m<sup>2</sup>





## Apartment One-bedroom (2+kk)

77 m<sup>2</sup>, Prague 1, Nové Město, Příčná

Sold

3NP - BYT 3.08

