



Apartment One-bedroom (2+kk)

Sold

78 m², Prague 1, Nové Město, Příčná





Apartment One-bedroom (2+kk)

Sold78 m², Prague 1, Nové Město, Příčná

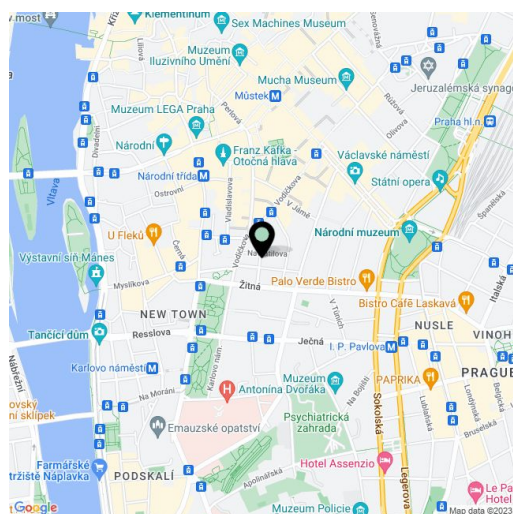
Total area	78 m ²
Parking	500 000
Garage	Yes
Cellar	-
PENB	G
Reference number	21324

New 1-bedroom apartment on the 3rd floor of a completely renovated Functionalist apartment building with a cellar and 11 garage parking spaces. It is located in the city center on a quiet street between the Můstek and Karlovo náměstí metro stations. The building was carefully renovated with an emphasis on high quality materials, attention to detail, preserved original features, and the addition of a reception. The project offers a total of 19 apartments of various sizes and layouts. Completion is scheduled for Q4 2015.

The apartment consists of a **northwest-facing living room** with a kitchen, a west-facing bedroom, a bathroom, a utility room, and a hallway. The apartment is renovated to a **high standard** including materials such as **Italian marble**, oak floors, and high-end sanitary ware.

The building is located near the Novoměstská radnice town hall, just a 3-minute walk from the metro and tram stops on Karlovo náměstí square and 7 minutes from the Můstek metro station on Wenceslas Square. The location offers complete urban amenities and plenty of cultural, social, and sports activities.

Interior 77.53 m².



* Area of the unit according to the Civil Code. The area consists of the sum total area of the entire unit bounded by perimeter walls.



Apartment One-bedroom (2+kk)

78 m², Prague 1, Nové Město, Příčná

Sold

VITRAGE HOUSE

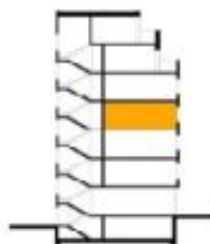
BYT 4.12 2+KK



LEGENDA MÍSTNOSTÍ

01	HALA	14,18 m ²
02	UBÝVALÍ POKOJ, KK	46,53 m ²
03	LOŽNICE	12,51 m ²
04	KOUPELNA	6,32 m ²

UŽITNÁ PLOCHA BYTU 79,34 m²





Apartment One-bedroom (2+kk)

Sold

78 m², Prague 1, Nové Město, Příčná

4NP - BYT 4.12

