



## Office building

Prague 5, Stodůlky, Kovářova

Rented





## Office building

Prague 5, Stodůlky, Kovářova

Rented

Service price	49 CZK monthly per m <sup>2</sup>
Total building area	232 m <sup>2</sup>
Tenant consumption	—
Parking	-
Parking service charges	—
Parking ratio	—
Certification	—
PENB	G
Reference number	21375

**Completely reconstructed multifunctional building with office and warehouse space for lease situated in Prague 5 in a quiet area of Stodůlky.**

### Location:

Excellent accessibility by public transport and by car – approx. 5 minutes' walk to the Stodůlky metro station (line B), direct connection to the D5 motorway, Prague Ring Road and main roads linking the administrative complex to the city center and the Vaclav Havel Airport Prague.

### Features and services:

Kitchenette  
Toilets  
Lighting  
24/7 access to the building  
Boiler and flow heater  
Floor tiles, carpet, and cast floor

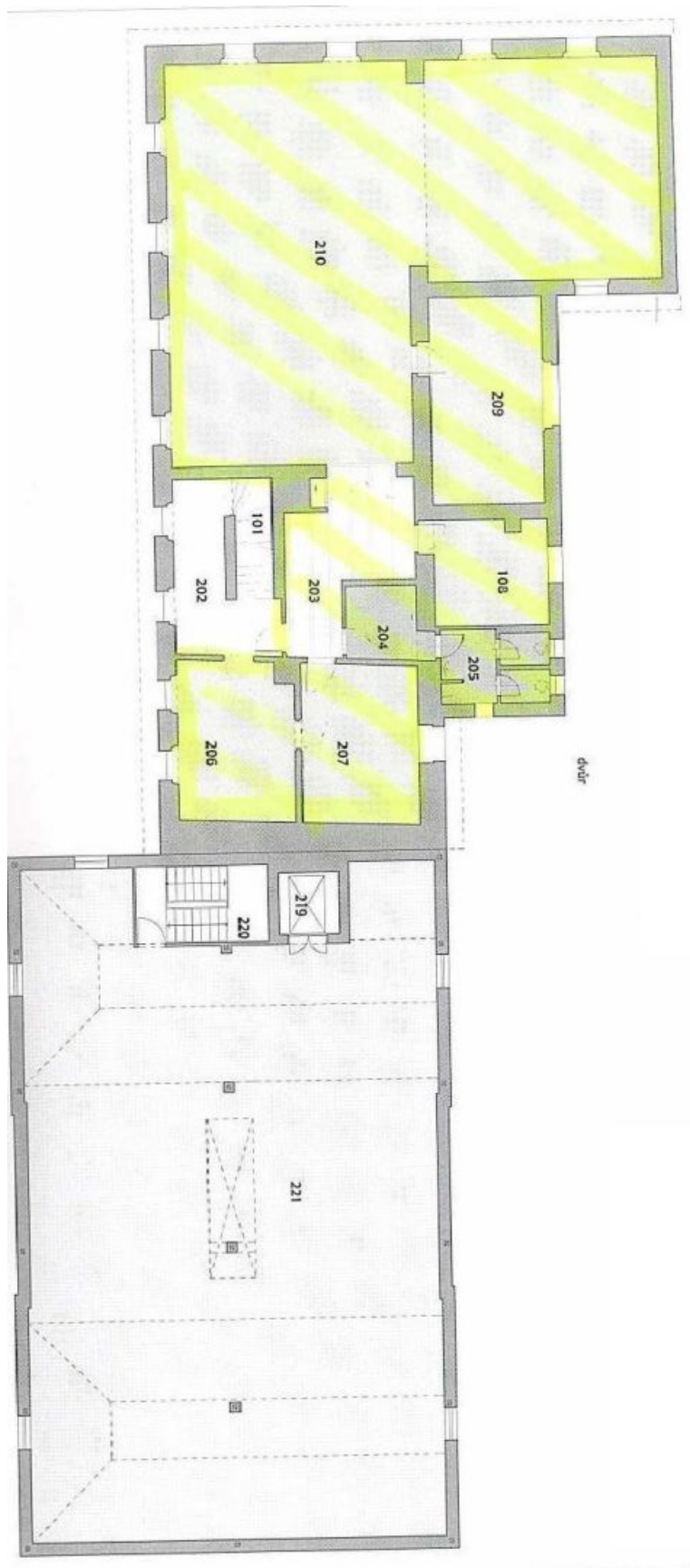
Rental and service charges listed without VAT. Lessee pays no commission.



# Office building

Prague 5, Stodůlky, Kovářova

Rented





# Office building

Prague 5, Stodůlky, Kovářova

Rented

