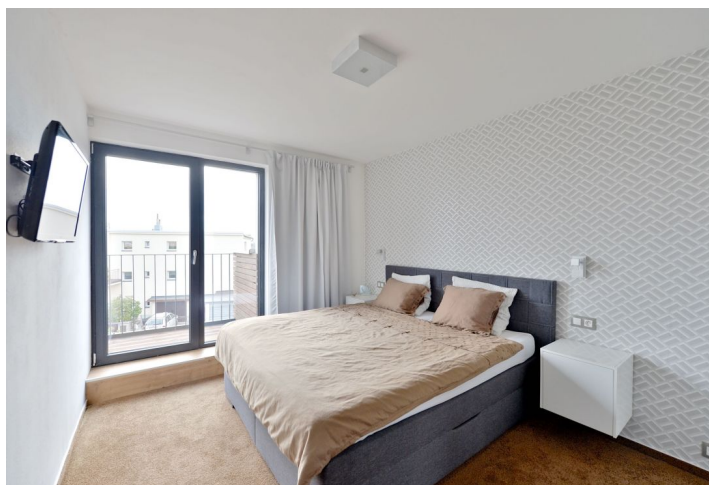




## House Three-bedroom (4+kk)

Sold

224 m<sup>2</sup>, Prague 5, Slivenec, K rozvodně





## House Three-bedroom (4+kk)

**Sold**224 m<sup>2</sup>, Prague 5, Slivenec, K rozvodně

Total area	224 m <sup>2</sup>
Plot	340 m <sup>2</sup>
Foot print	80 m <sup>2</sup>
Garden	260 m <sup>2</sup>
Floor area	204 m <sup>2</sup>
Terrace	20 m <sup>2</sup>
Parking	Garage and parking on the plot.
Garage	Yes
Cellar	-
PENB	B
Reference number	21435

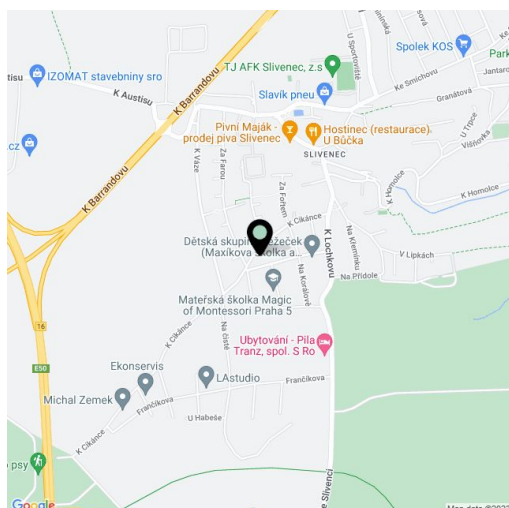
**Brand new 3-bedroom 2-bathroom semi-detached house with fireplace and lovely green views, situated in a quiet green residential area of Slivenec, about a 12-minute drive from the city center, and convenient to the Prague Ring Road.**

The main floor features a living room with dining area, a fully fitted open kitchen and access to the terrace, a guest bedroom, and a bathroom with shower, sink and toilet. The second floor offers a master bedroom with a balcony and a large walk-in closet, a bedroom that could be separated by a partition and used as two children's bedrooms, and a full bathroom. The ground floor is used as a utility area including entry hall with built-in storage, laundry / boiler room, and two storage rooms.

Equipped with a **fireplace**, quality laminated floors, tiles, **floor heating**, outdoor automatic blinds, gas boiler, automatic gate. **Garage and parking on the plot.**

Slivenec features a nursery and elementary school, a playground, shops, cafés and restaurants, more amenities available in nearby Velká Chuchle. Quick connection to the city center, public transport stop located just a 3-minute walk from the house.

Interior 184 m<sup>2</sup>, terrace 20 m<sup>2</sup>, footprint 80 m<sup>2</sup>, garden 260 m<sup>2</sup>, plot 340 m<sup>2</sup>.



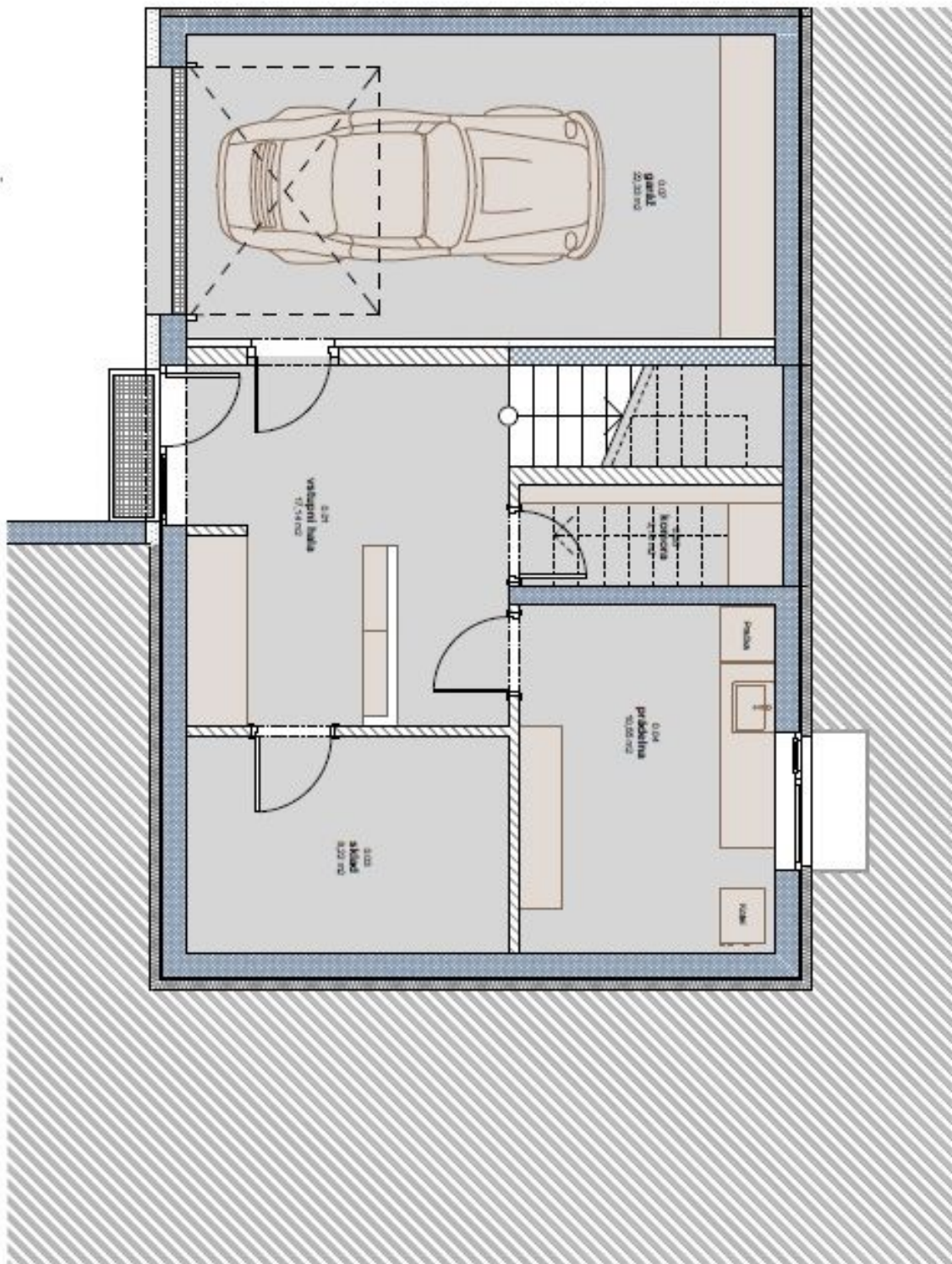




## House Three-bedroom (4+kk)

224 m<sup>2</sup>, Prague 5, Slivenec, K rozvodně

Sold

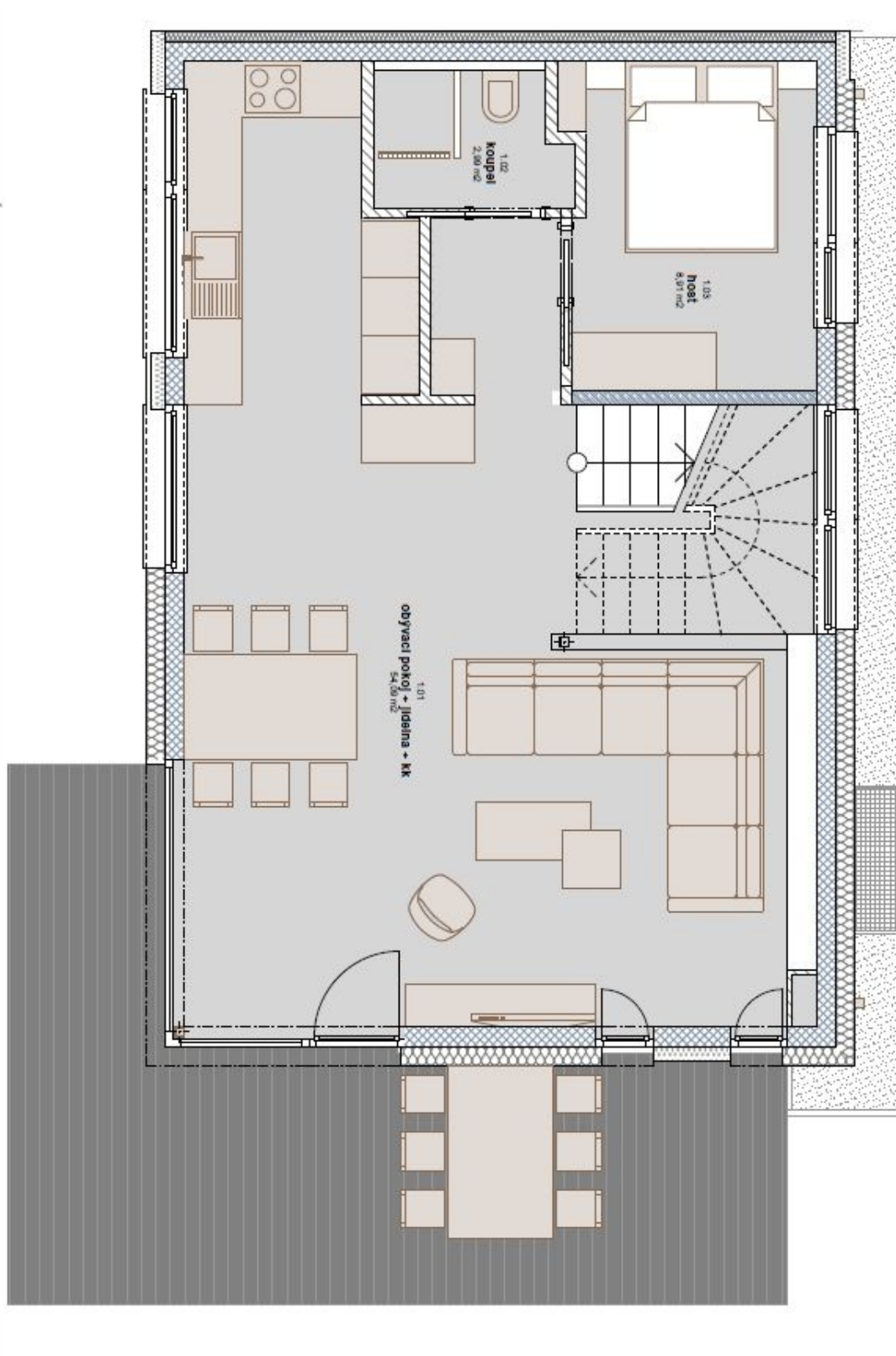




## House Three-bedroom (4+kk)

224 m<sup>2</sup>, Prague 5, Slivenec, K rozvodně

Sold





## House Three-bedroom (4+kk)

224 m<sup>2</sup>, Prague 5, Slivenec, K rozvodně

Sold

