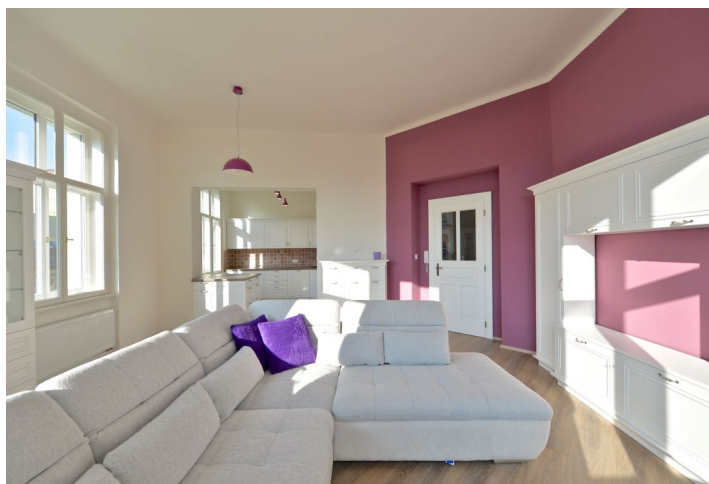
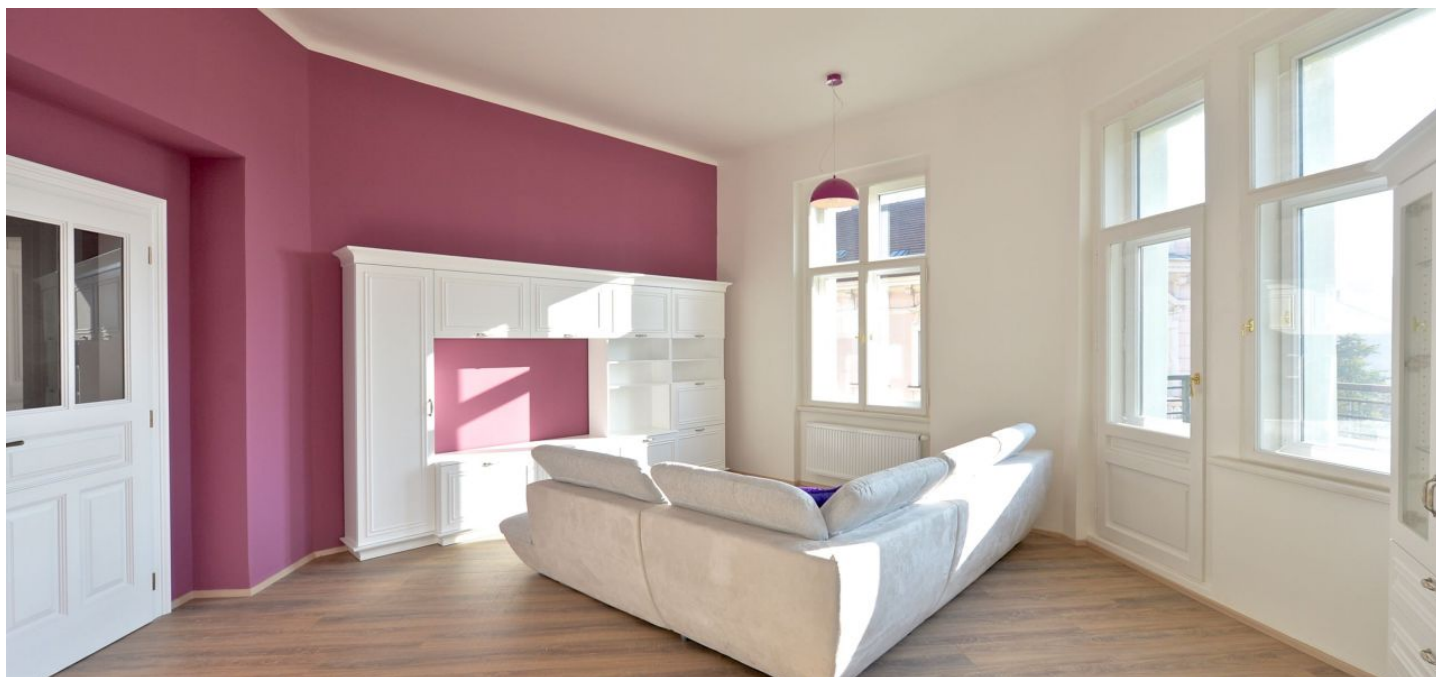




## Apartment One-bedroom (2+kk)

Rented

74 m<sup>2</sup>, Praha 8, Libeň, Světova





## Apartment One-bedroom (2+kk)

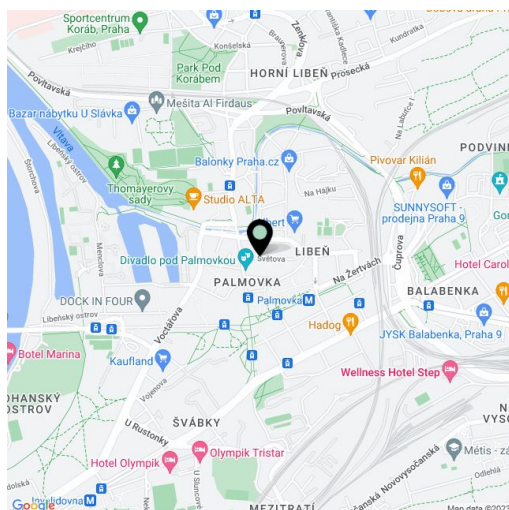
**Rented**74 m<sup>2</sup>, Praha 8, Libeň, Světova

Total area	76 m <sup>2</sup>
Floor area*	74 m <sup>2</sup>
Balcony	2 m <sup>2</sup>
Parking	Courtyard parking.
Cellar	-
PENB	G
Reference number	21454
Available from	Immediately

**Brand new furnished 1-bedroom flat with a balcony, situated on the third floor of a completely newly reconstructed corner residential building with a lift. Located just steps from Divadlo pod Palmovkou Theater, a few minute walk from the Thomayerovy sady park and Palmovka metro station and multiple tram and bus links, with quick access to the city center.**

The bright interior includes a spacious entry hall, corner living room with dining area and a fully fitted and equipped open kitchen plus balcony access, one bedroom with lots of built-in storage, shower bathroom, a separate toilet, and utility room.

Preserved original details, new equipment, high ceilings, quality laminated floors, security entry door, well insulated wooden windows, storage, central heating, electric boiler for heating water, dishwasher, TV, audio entry phone. One parking space available in the courtyard of the building at an additional fee. Common building charges and deposit for heating around CZK 3000/month. Water and electricity are billed separately.



\* Area of the unit according to the Civil Code. The area consists of the sum total area of the entire unit bounded by perimeter walls.