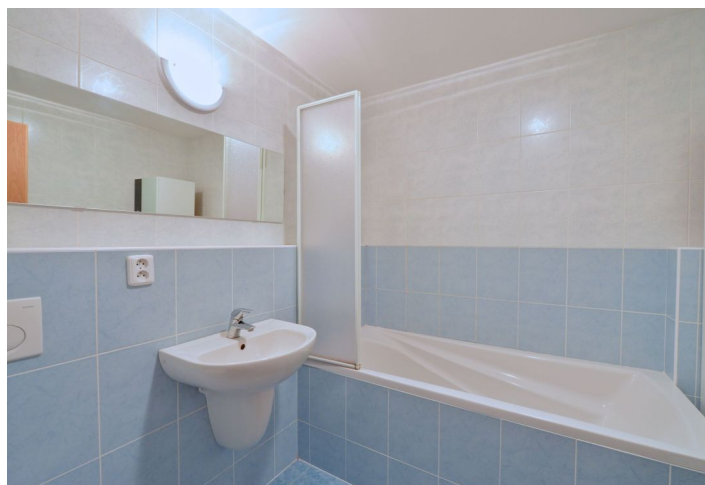




Apartment One-bedroom (2+kk)

Rented

70 m², Praha 6, Břevnov, Bolívarova





Apartment One-bedroom (2+kk)

Rented

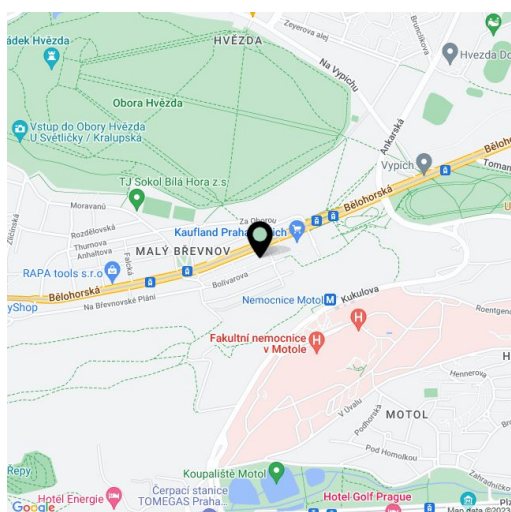
70 m², Praha 6, Břevnov, Bolívarova

Total area	70 m ²
Parking	-
Cellar	-
PENB	G
Reference number	21495
Available from	Immediately

Completely furnished 1-bedroom flat situated on the first floor with lift in a modern building located in Břevnov, Prague 6, with two parks nearby. Location within easy reach of the wonderful green Šárka Valley, convenient to Prague 6 international schools and the international airport. Regular tram and bus connections to the city center.

The interior includes entry hall, living room with a fully fitted open kitchen, one bedroom with a walk-in closet, and bathroom with bath tub with a shower screen, sink and toilet.

Laminated floors, tiles, security entry door, gas boiler, washer, dishwasher, wine fridge, dishes and kitchenware, bedding, TV, audio entry phone, shared storage room in the building. Easy parking on the street. Common building charges and deposit for utilities around CZK 3200 per month. Ideal for a couple.



* Area of the unit according to the Civil Code. The area consists of the sum total area of the entire unit bounded by perimeter walls.