



House Four-bedroom (5+kk)

Sold

160 m², Praha 6, Střešovice, Na Ořechovce





House Four-bedroom (5+kk)

Sold160 m², Praha 6, Střešovice, Na Ořechovce

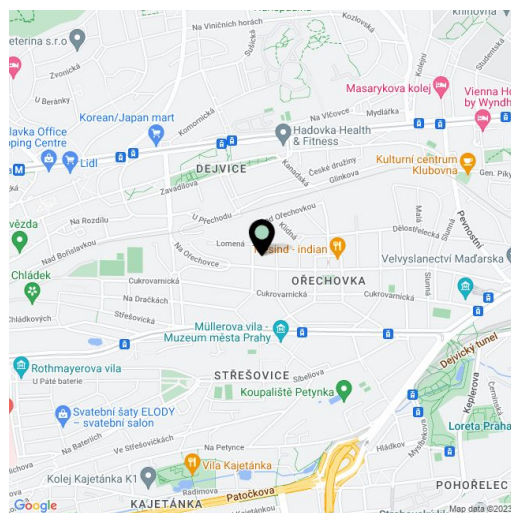
Plot	206 m ²
Foot print	126 m ²
Garden	80 m ²
Parking	Parking on the street
Cellar	Yes
PENB	G
Reference number	21523

Completely newly renovated terraced villa with conservatory and beautiful views, situated in the prestigious area of Prague 6 – Ořechovka. The location boasts majestic villas, parks, and easy access downtown and to the airport. Furthermore it is close to the Prague Castle complex.

The basement features space for storage and technical facilities, while the ground floor consists of a living room, kitchen with conservatory and sliding door leading to the terrace, a separate toilet, and a hallway. The 1st floor features 3 bedrooms and bathrooms; the 2nd floor has a bedroom, bathroom, walk-in wardrobe, and storage room.

Amenities include **hardwood floors**, large format tiles, **wooden windows** and interior doors, fully equipped modern kitchen, alarm, **underfloor heating** provided by a gas boiler.

Interior approx. 160 m², footprint 126 m², garden 80 m², plot 206 m².

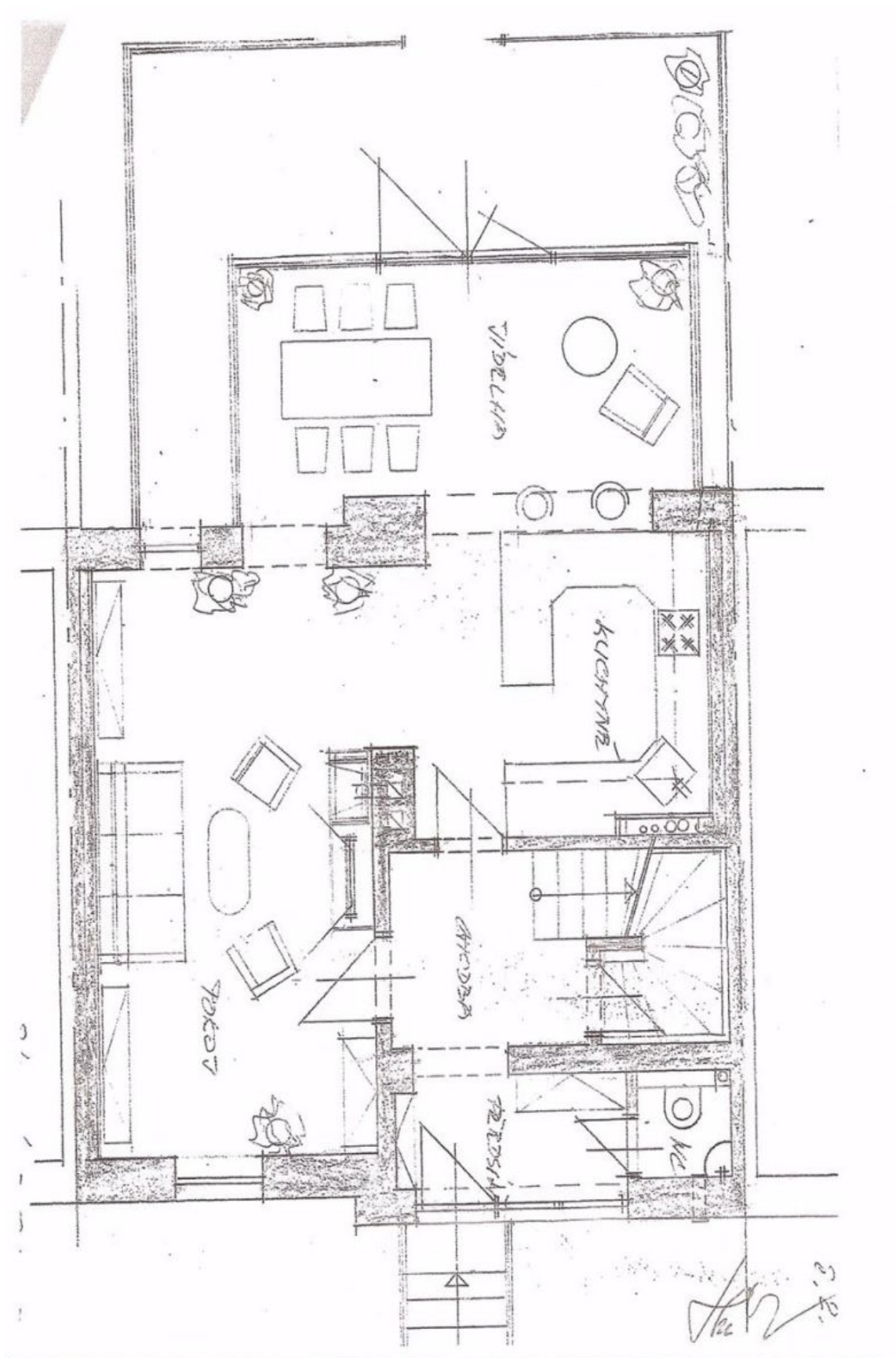




House Four-bedroom (5+kk)

160 m², Praha 6, Střešovice, Na Ořechovce

Sold

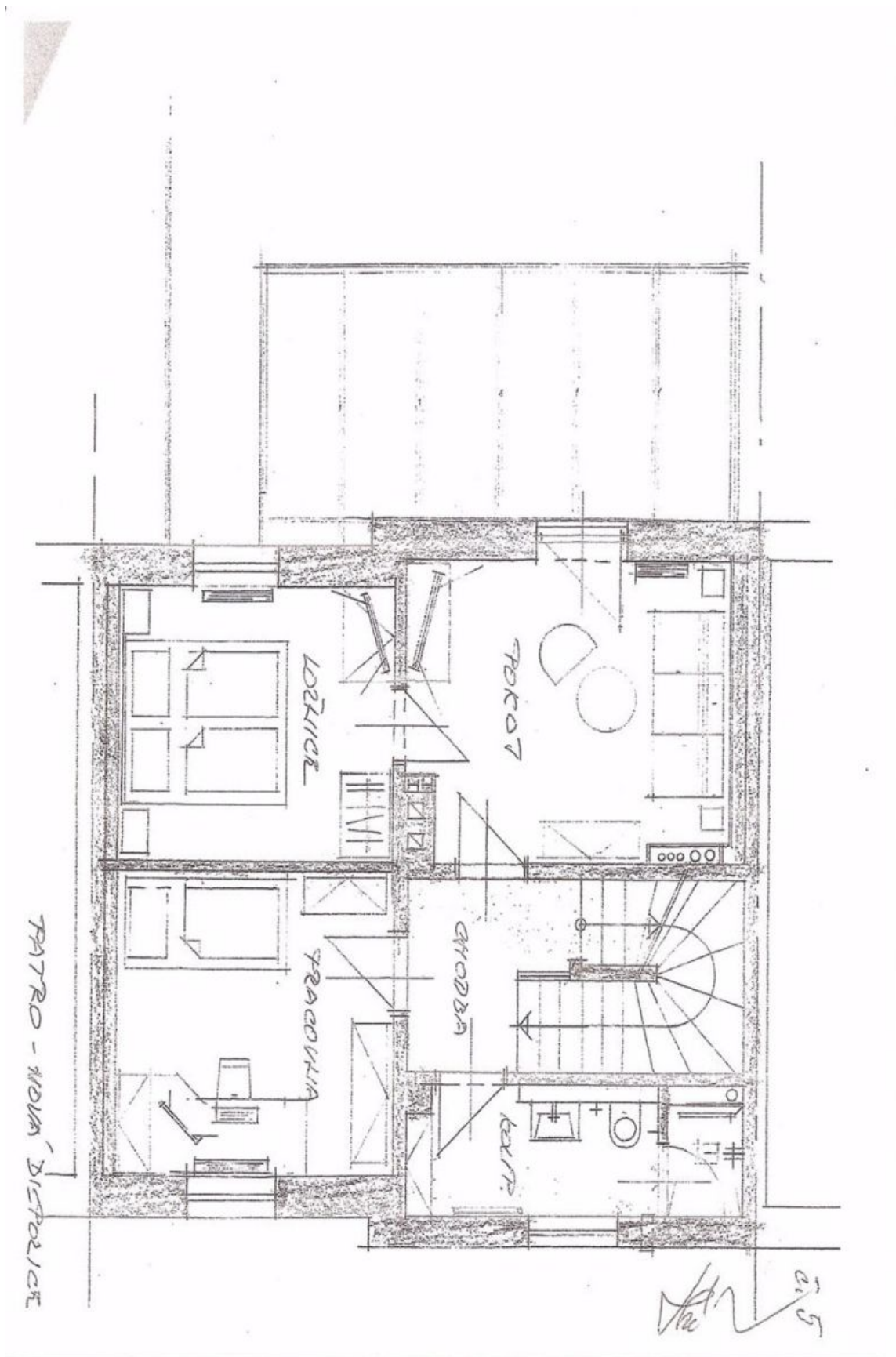




House Four-bedroom (5+kk)

160 m², Praha 6, Střešovice, Na Ořechovce

Sold

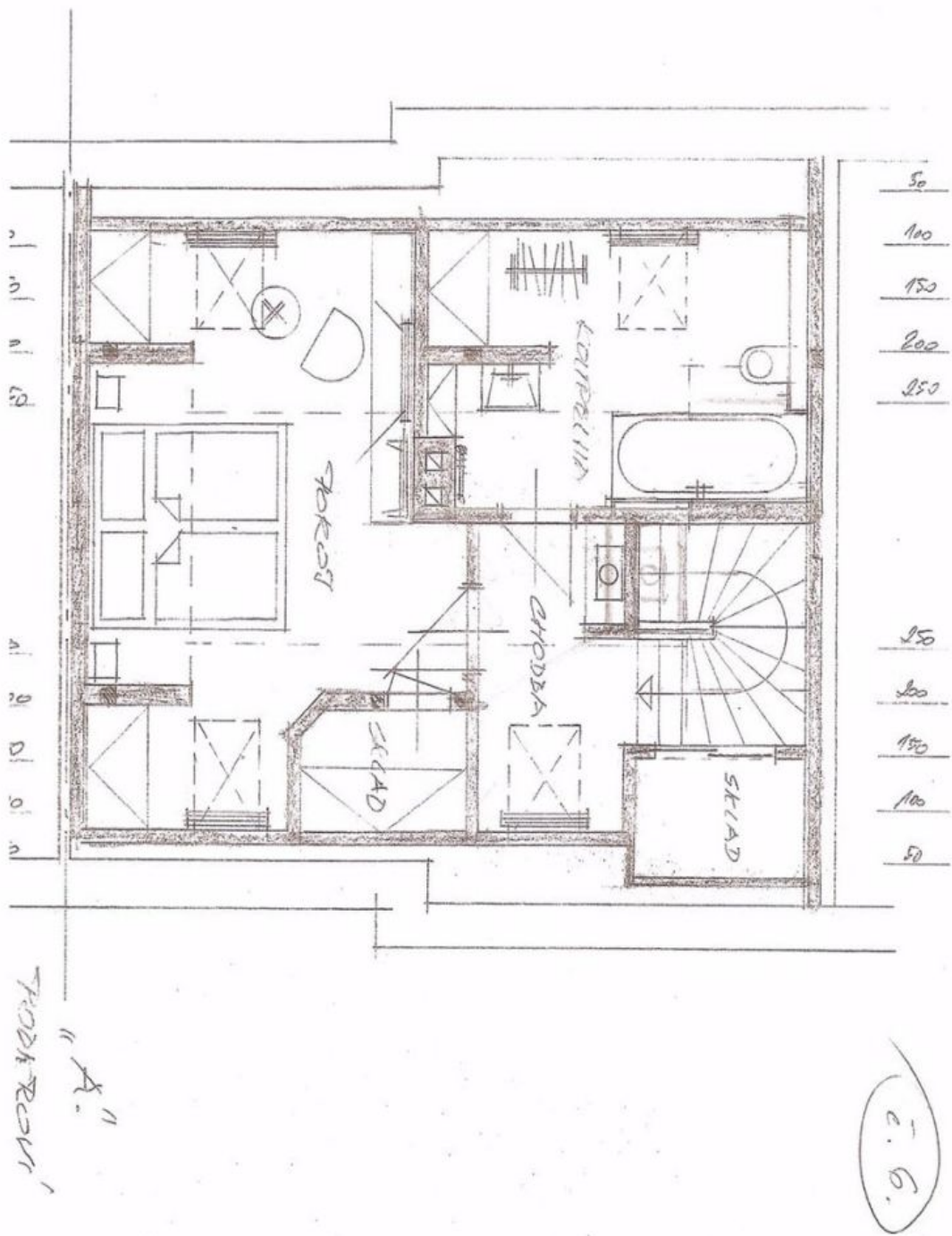




House Four-bedroom (5+kk)

Sold

160 m², Praha 6, Střešovice, Na Ořechovce

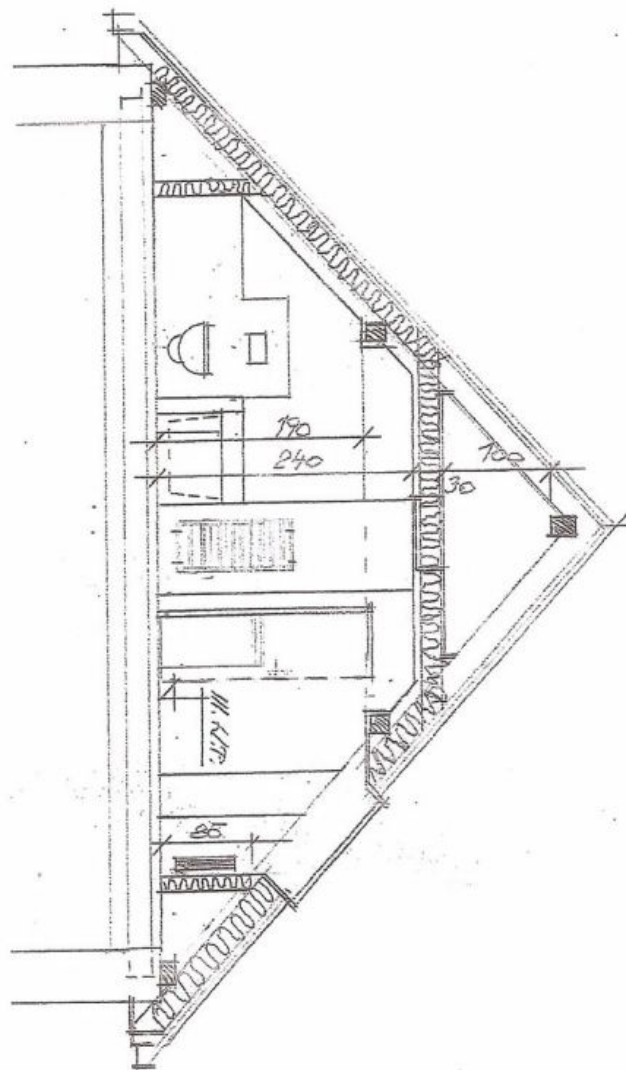




House Four-bedroom (5+kk)

160 m², Praha 6, Střešovice, Na Ořechovce

Sold



TRZ A-A'