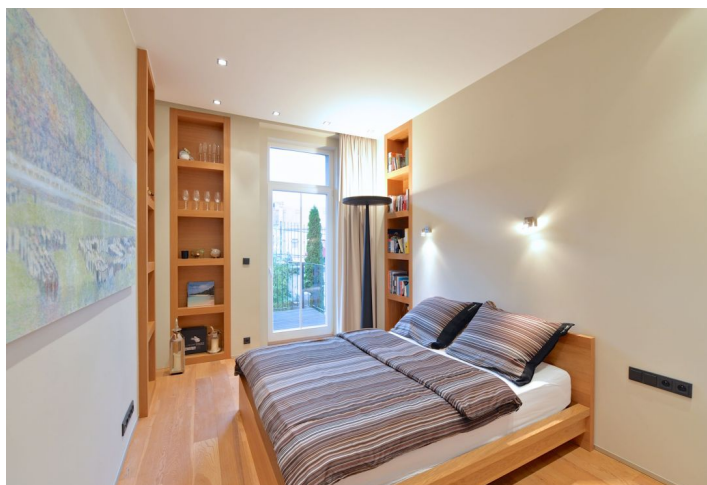




## Apartment One-bedroom (2+kk)

Rented

68 m<sup>2</sup>, Prague 3, Žižkov, Řehořova





## Apartment One-bedroom (2+kk)

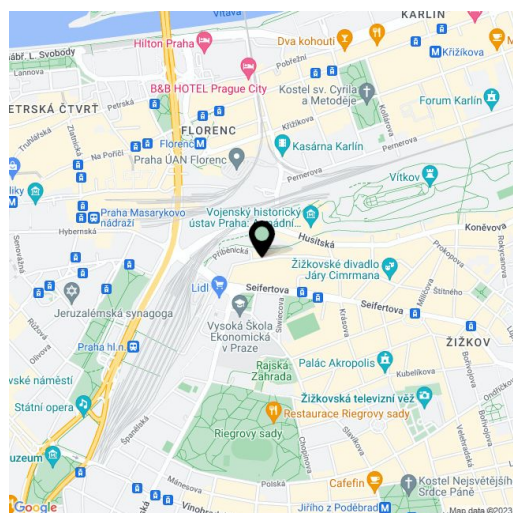
**Rented**68 m<sup>2</sup>, Prague 3, Žižkov, Řehořova

Total area	74 m <sup>2</sup>
Floor area*	68 m <sup>2</sup>
Terrace	6 m <sup>2</sup>
Parking	Garage parking available 200 m from the building at CZK 1600-1900/month.
Garage	Yes
Cellar	-
PENB	G
Reference number	21557
Available from	Immediately

**Architect designed and tastefully furnished 1-bedroom flat with a terrace, in a completely reconstructed classic building with a lift. Conveniently located a short walk from the city center (one tram stop from Hlavní nádraží metro station), and close to the Vítkov and Parukářka parks. Two minute walk from tram stops, just a five minute tram ride to the city center, Riegrovy sady Park within walking distance. Design by the renowned Donlić studio.**

With quality materials and finishes, the flat features a fully fitted open plan kitchen with integrated appliances and lots of storage space, living room, one bedroom with built-in wardrobes and shelves plus access to the terrace facing the back yard, shower bathroom with bidet and toilet, a fitted walk-in closet, and entry hall.

Custom made furniture, high ceilings, wooden floors, security entry door, recessed lighting, washer, dryer, TV, alarm that can be connected to a security agency, audio entry phone, camera system in the building. Garage parking available 200 m from the building at CZK 1600-1900/month. Common building charges and deposit for utilities CZK 3600 per month.



\* Area of the unit according to the Civil Code. The area consists of the sum total area of the entire unit bounded by perimeter walls.



## Apartment One-bedroom (2+kk)

68 m<sup>2</sup>, Prague 3, Žižkov, Řehořova

Rented

