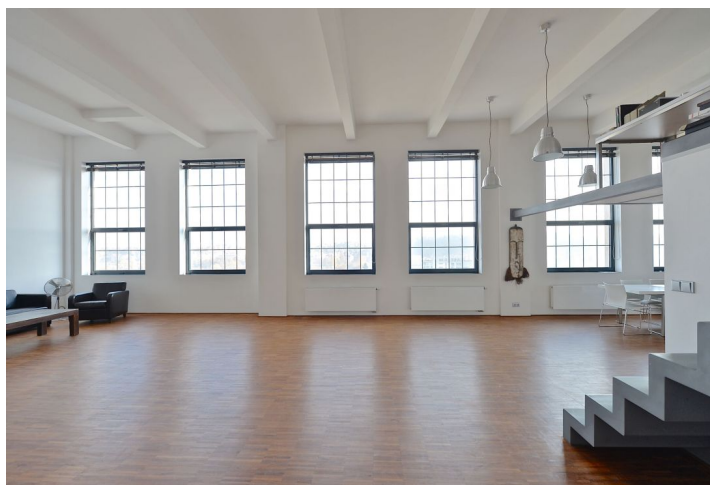
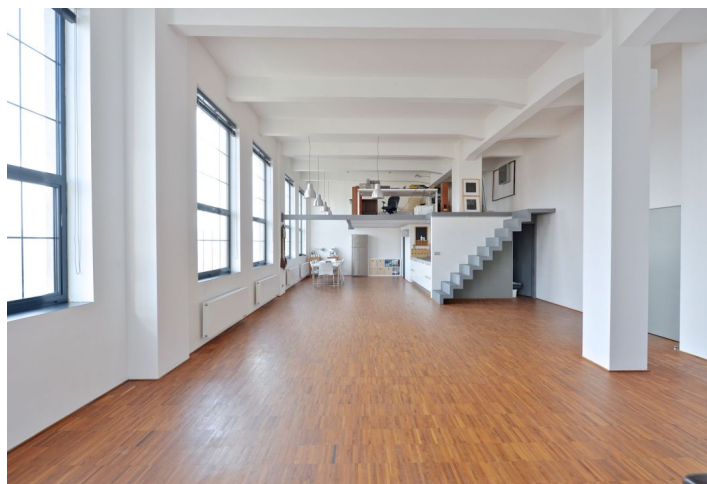
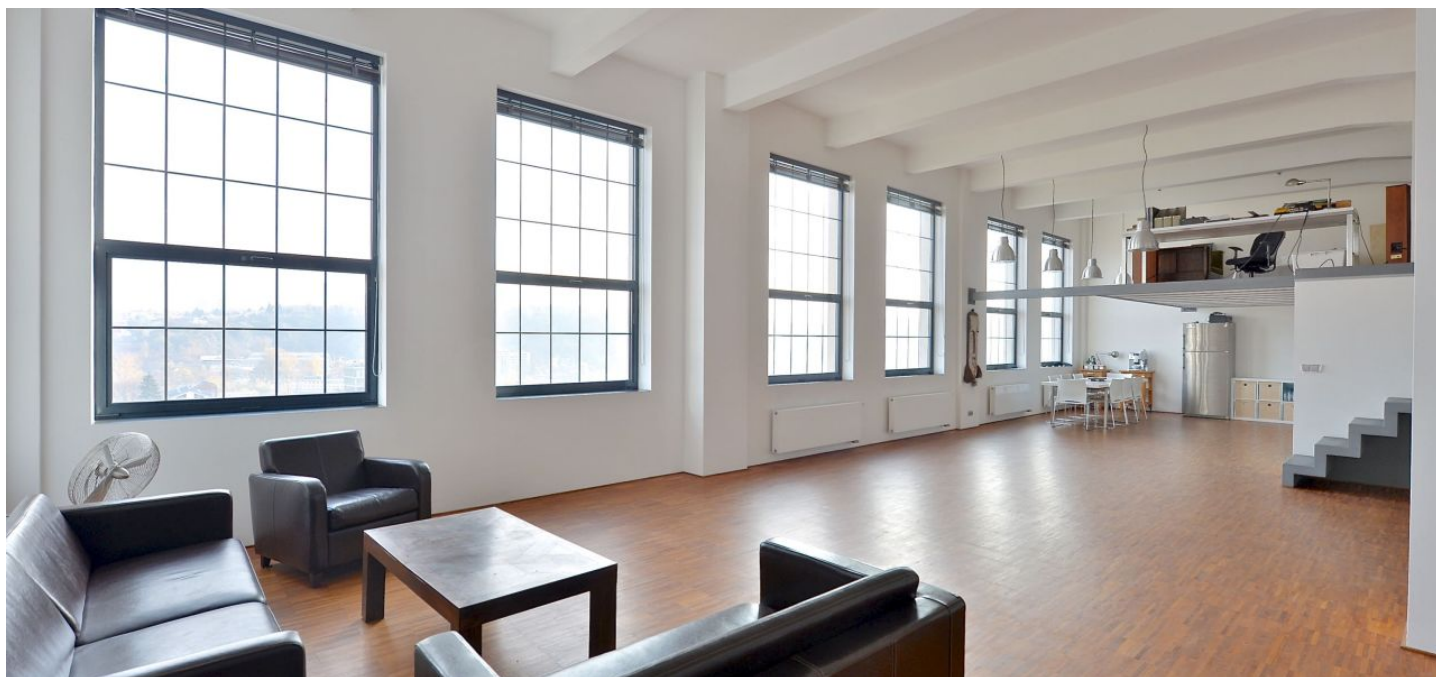




Office space

Prague 5, Smíchov, Křížová

Rented





Prague 5, Smíchov, Křížová

Service price	5 000 CZK monthly
Available area	143 m ²
Cellar	-
Parking	EUR 120 / ps / month
PENB	G
Reference number	21563

Loft studio for lease on the 5th floor of an original factory building that underwent a complete conversion and now fulfills all requirements of current standards. Approved for use as a commercial space. The original reinforced concrete building, built at the beginning of the 19th century as a Škoda factory, gained a number of international awards thanks to its sensitive conversion, namely Best International Redevelopment and Best European Interior Design. Close to the commercial center of Andel, near the peaceful Prokop Valley. Possibility of major architectural changes/modifications in case of longer lease.

Location:

The building is situated in Prague 5 – Smíchov. Very easily accessible by car and public transport – tram and bus stops are located nearby with connections to the Smíchovské nádraží metro station (line B).

Features and services:

- Fully equipped kitchenette
- Bathroom with a bathtub, sink and toilet
- Open gallery with an area of 27.5 m²
- Equipped with hardwood floors
- Large-format windows
- Blinds
- Security doors
- Wi-Fi Internet
- Video intercom
- Ceiling height 4,5 m
- Possibility of additional parking spaces

Rental and service charges are listed without VAT. Lessee pays no commission.

