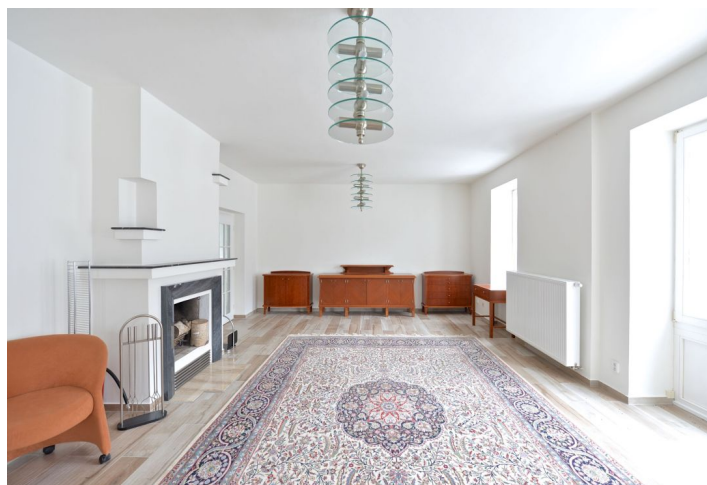




House Six-bedroom (7+1)

Sold

350 m², Prague 6, Dejvice, V Šáreckém údolí





House Six-bedroom (7+1)

Sold350 m², Prague 6, Dejvice, V Šáreckém údolí

Plot	2 075 m ²
Foot print	302 m ²
Garden	1 773 m ²
Parking	Garage for 3 cars
Garage	Yes
Cellar	-
PENB	G
Reference number	21606

Impressive 1930's villa after partial reconstruction with 2 fireplaces, 3 garages and lovely green views, set in the quiet natural area of Dolní Šárka.

The partially sunken ground floor consists of a relaxation zone featuring, among other things, a **sauna** and bathroom. On the 1st floor there is the dominant feature of the house – an exceptionally spacious living room with a large fireplace, terrace and door leading to a separate kitchen. On both the 2nd and 3rd floors we can find 3 bedrooms (one of them with another fireplace) and 1 bathroom. Equipped with wooden floating floors and tiles, **new wooden windows**, refurbished wooden doors, built-in AEG appliances, a heat pump.

Just two minutes on foot from the house there is a bus stop with a direct 8-minute connection to the Dejvická metro station and to full public amenities.

Interior 350 m², built-up area 302 m², garden 1 773 m², plot 2 075 m².

