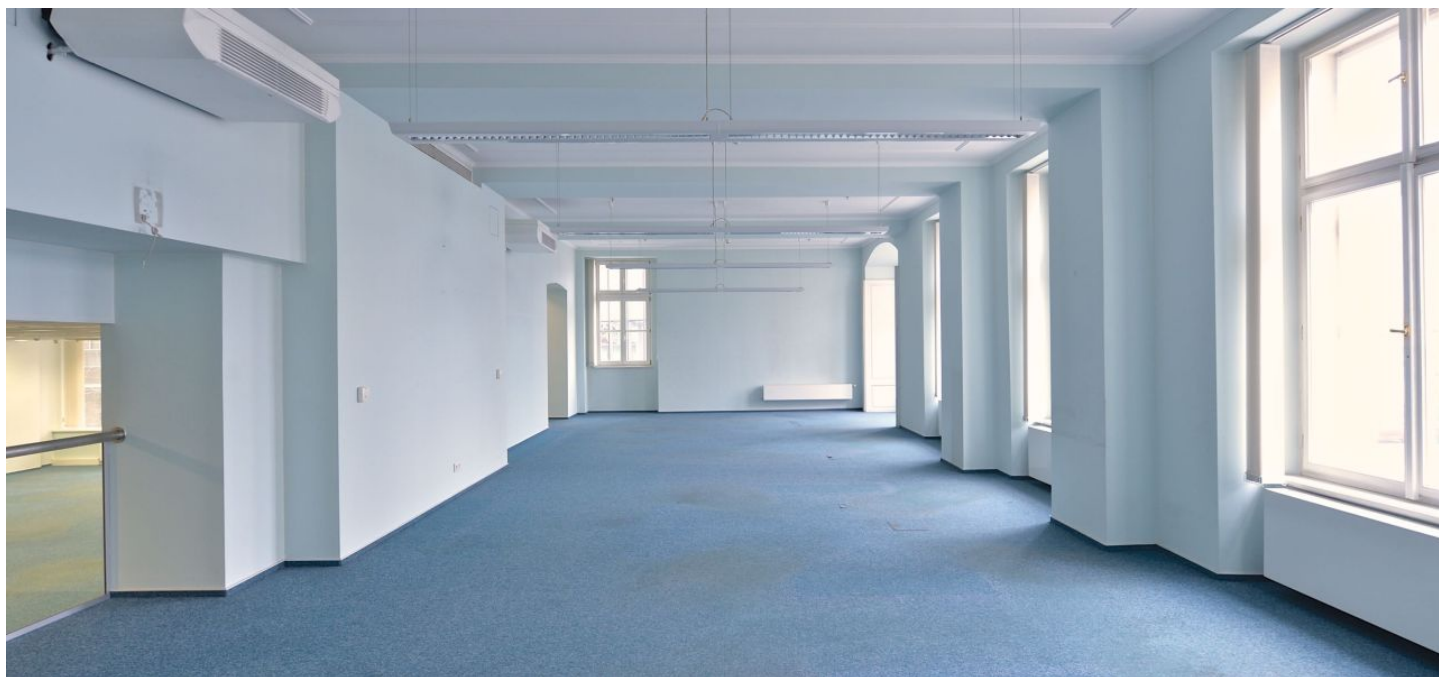




# Office space

€ 19.50 / m<sup>2</sup> | CZK 494 / m<sup>2</sup>

Praha 1, Staré Město, V Celnici



**Office space**

Praha 1, Staré Město, V Celnici

**€ 19.50 / m<sup>2</sup> | CZK 494 / m<sup>2</sup>**

<b>Service price</b>	155 CZK monthly per m <sup>2</sup>
<b>Available area</b>	800 m <sup>2</sup>
<b>Cellar</b>	-
<b>Parking</b>	CZK 5 500 / ps / month
<b>PENB</b>	C
<b>Reference number</b>	21612

Office space for lease on the mezzanine in administrative building in the center of Prague with excellent access by car and public transport. Building also offers underground parking with more than 400 parking spaces.

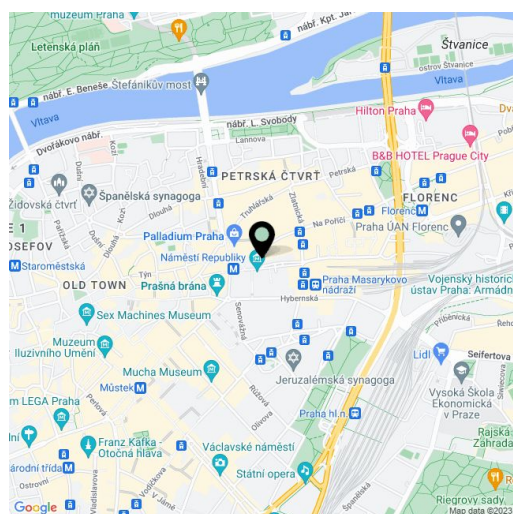
**Location:**

Outstanding accessibility by car and public transportation - close to Náměstí Republiky metro station (line B), important tram hub and Masaryk train station and close to city highway with direct connection to D1 highway.

**Features and Services:**

Lowered ceilings with built-in lighting  
 Double floors  
 Carpet  
 Air conditioning  
 Heating with backup power supply  
 Kitchenette  
 Toilets  
 24/7 security  
 Representative reception  
 Chip card access

Rental and service charges listed without VAT. Lessee pays no commission.

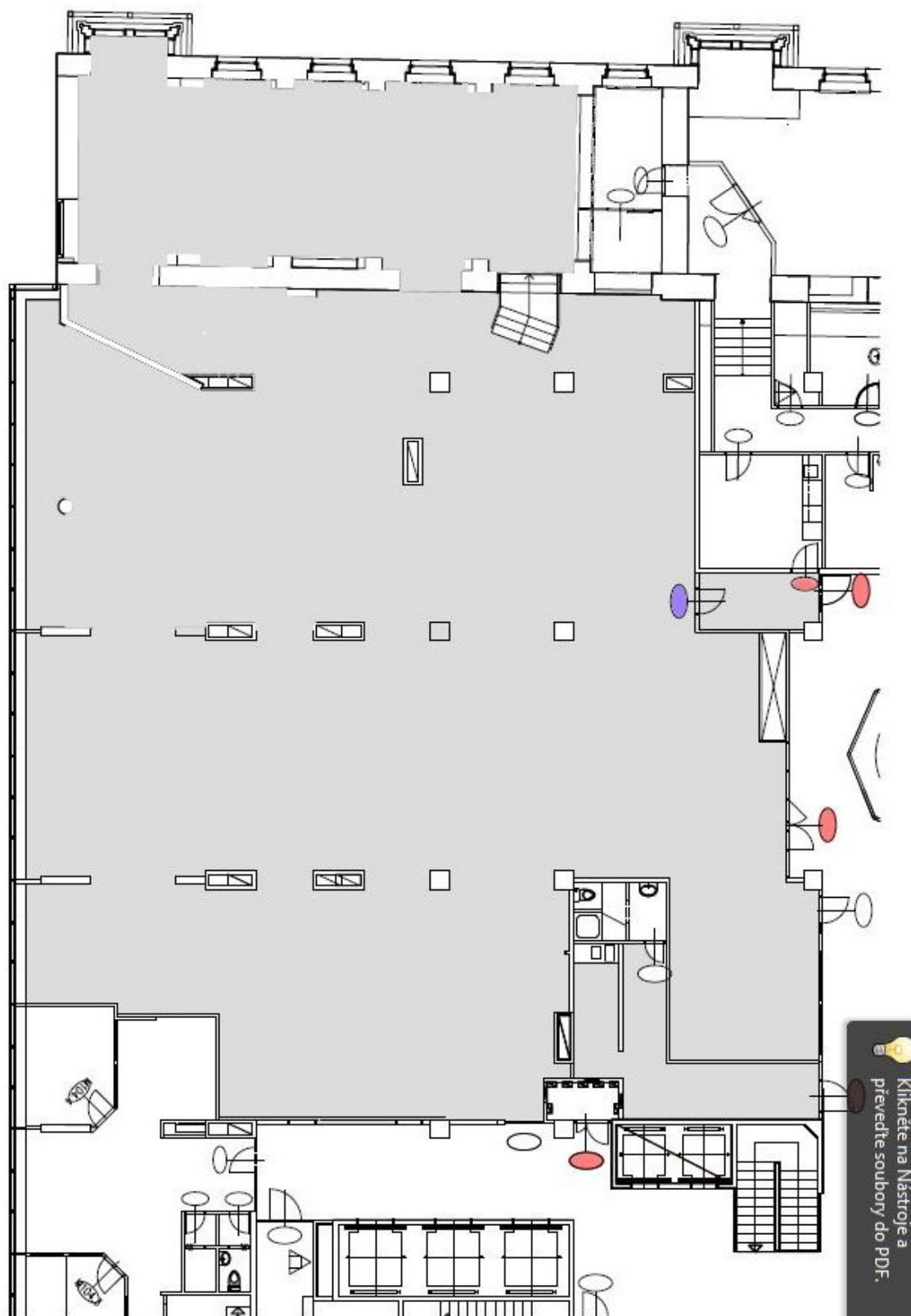




## Office space

Praha 1, Staré Město, V Celnici

€ 19.50 / m<sup>2</sup> | CZK 494 / m<sup>2</sup>



Klikněte na Nástroje a  
převěďte soubor do PDF.