



## House Four-bedroom (5+kk)

Sold

141 m<sup>2</sup>, Prague 4, Cholupice, Lhenická





## House Four-bedroom (5+kk)

**Sold**141 m<sup>2</sup>, Prague 4, Cholupice, Lhenická

Plot	463 m <sup>2</sup>
Parking	Garage for 1 car
Garage	Yes
Cellar	-
PENB	G
Reference number	21662

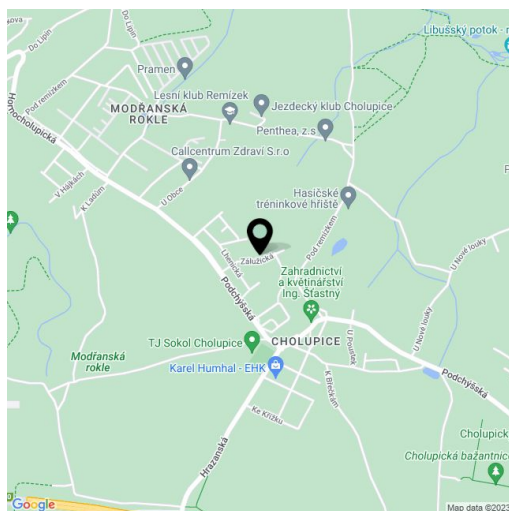
**Attractive newly built family house with 2 bathrooms, garage, and terrace, just steps away from Šance and Modřanská rokle nature reserves. Pleasant residential location with full amenities, within easy reach (30-minute drive) to the city center.**

The ground floor offers a living room with kitchen, dining area and access to the garden; a study, bathroom, entry hall, and a garage connected with interior and the terrace. The 1st floor consists of 3 bedrooms, a bathroom, separate toilet, and a staircase hall.

Equipped with floating laminate floors, Venus and Rako large format tiles, CPL foil interior doors, Grohe and Vitra bathroom fixtures.

Within 2 km you can find a kindergarten and elementary school, playground, equestrian club, cycling and skating tracks, restaurants and other services. A new city ring road runs near Cholupice, within easy walking distance of the project is a bus stop. 5-minute drive to the center of Modřany, 15 minutes to the swimming pool in Podolí and 30 minutes to the center of Prague.

Interior 140.7 m<sup>2</sup>, plot 463 m<sup>2</sup>.

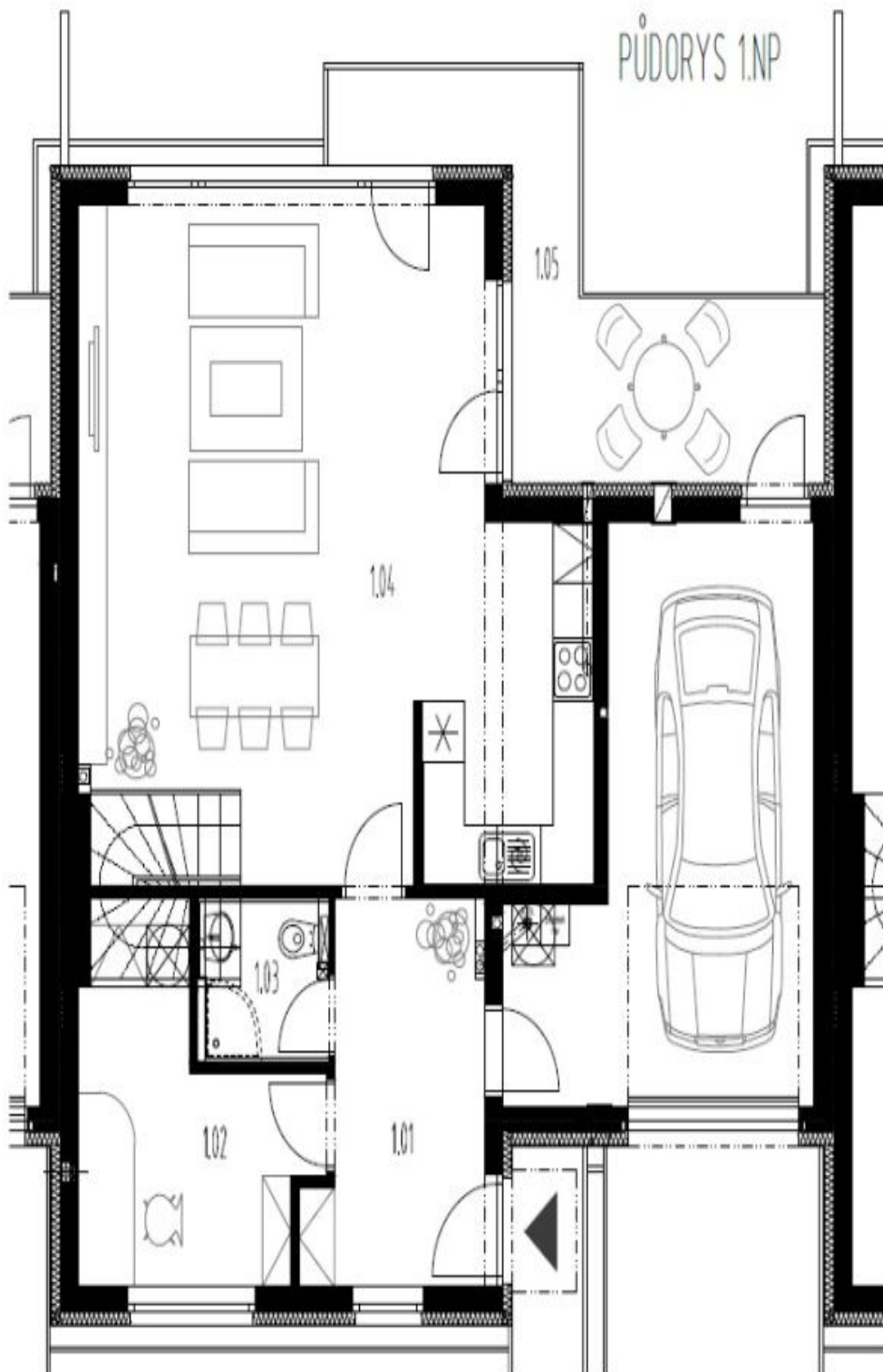




## House Four-bedroom (5+kk)

141 m<sup>2</sup>, Prague 4, Cholupice, Lhenická

Sold



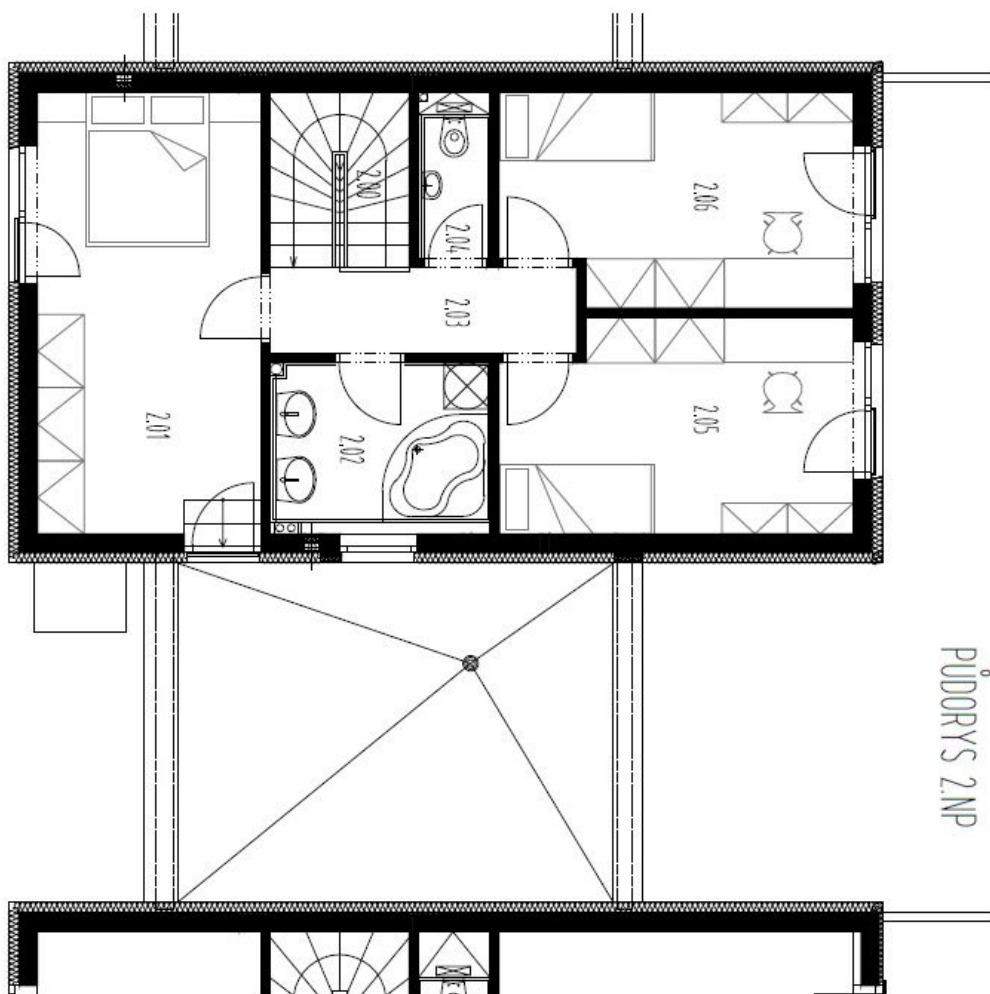




## House Four-bedroom (5+kk)

141 m<sup>2</sup>, Prague 4, Cholupice, Lhenická

Sold

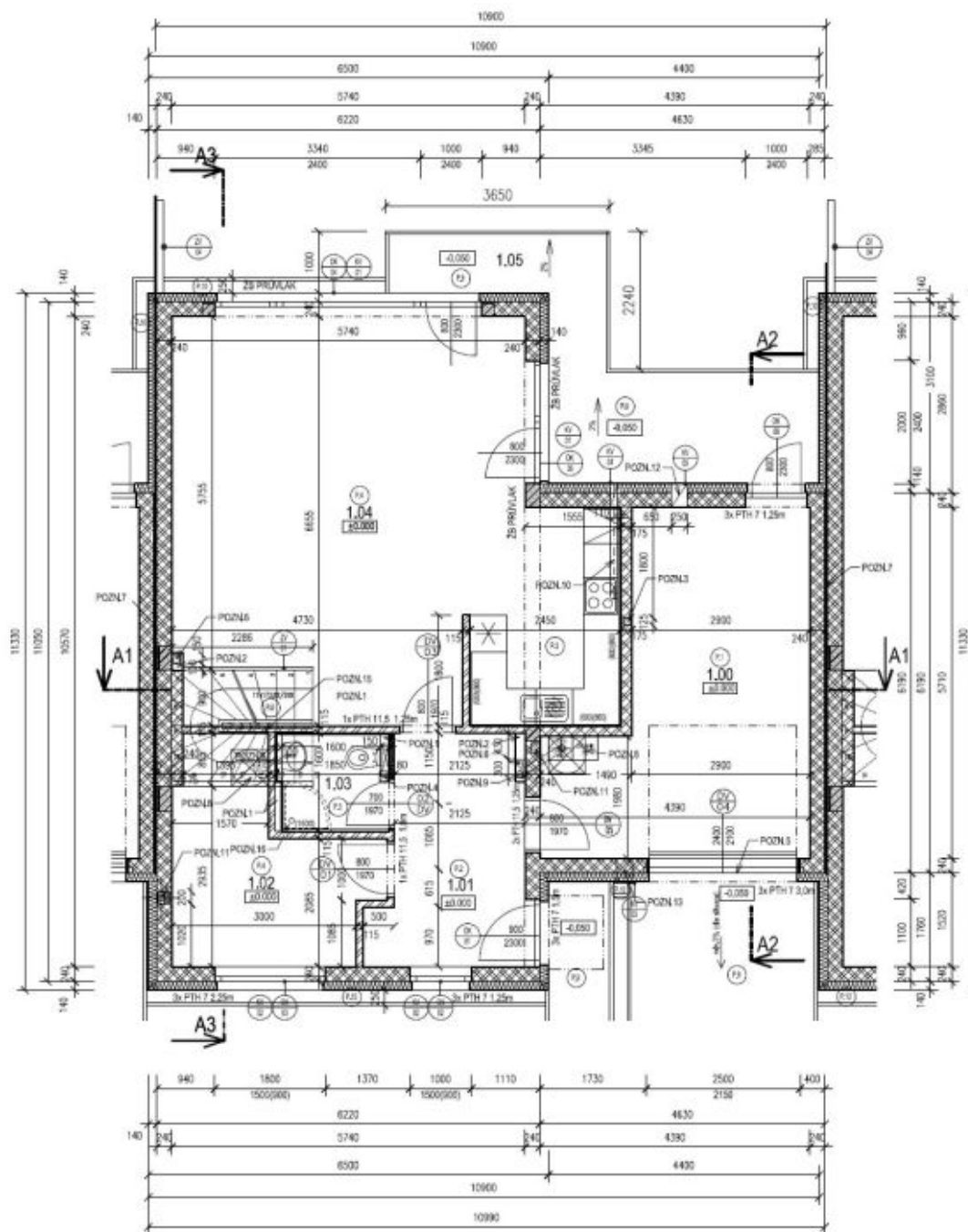




# House Four-bedroom (5+kk)

141 m<sup>2</sup>, Prague 4, Cholupice, Lhenická

Sold





# House Four-bedroom (5+kk)

141 m<sup>2</sup>, Prague 4, Cholupice, Lhenická

**Sold**

