



## Farmhouse estate Five-bedroom (6+kk)

Sold

Kladno, Kamenné Žehrovice, Na Spáleníšti





## Farmhouse estate Five-bedroom (6+kk)

**Sold**

Kladno, Kamenné Žehrovice, Na Spáleníšti

Total area	550 m <sup>2</sup>
Foot print	2 142 m <sup>2</sup>
Plot	3 537 m <sup>2</sup>
Parking	Garage for 3 cars, additional parking on the plot
PENB	E
Reference number	21684

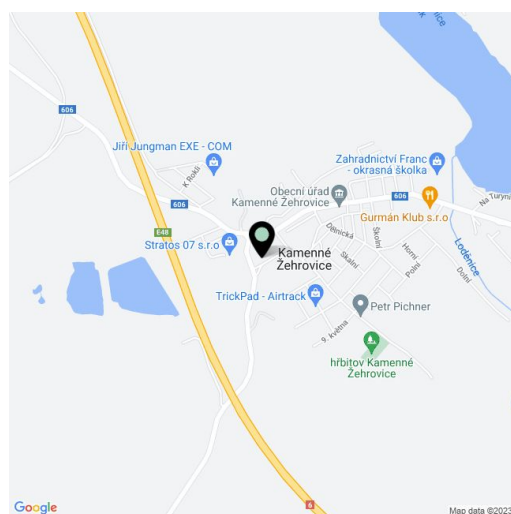
**Completely renovated large homestead with fireplace, summer kitchen and a carefully landscaped garden, situated opposite a park in the residential area of Kamenné Žehrovice, just a 25-minute drive via the R6 expressway from the metro station and shopping center in Zličín.**

The homestead consists of the main building with basement, guest house connected to the workshop and garage for three cars, and a large barn. The ground floor of the main building consists of a generous living room with **glazed fireplace**, dining area, kitchen and pantry; there is also a bedroom, study, bathroom with bathtub, shower and toilet, hall and storage room. From the living room and the bedroom you can enter the covered patio connected to the **summer kitchen with brick barbecue**. On the first floor you can find a spacious living room with a kitchen, built-in mezzanine and two balconies, a bedroom and a bathroom (walk through to the attic). The guest house consists of a lounge with a kitchen and separate toilet; the attic consists of an open space suitable for dividing into several bedrooms. There is a garage for 3 cars, workshop and storage space for garden tools and furniture. The barn is currently used as a sports hall with golf simulator.

Amenities include **solid wood floors and windows**, large format tiles, 3x fully equipped kitchen, **massage shower**, a large amount of storage space, exposed ceiling beams. The purchase price includes custom made furniture.

Quiet residential location with basic amenities and good access to Prague. The village has a kindergarten and elementary school, restaurant, shop and children's playground, complete services are available in nearby Kladno, about 10 minutes away by car.

Interior 550 m<sup>2</sup>, footprint 2 142 m<sup>2</sup>, plot 3 537 m<sup>2</sup>.



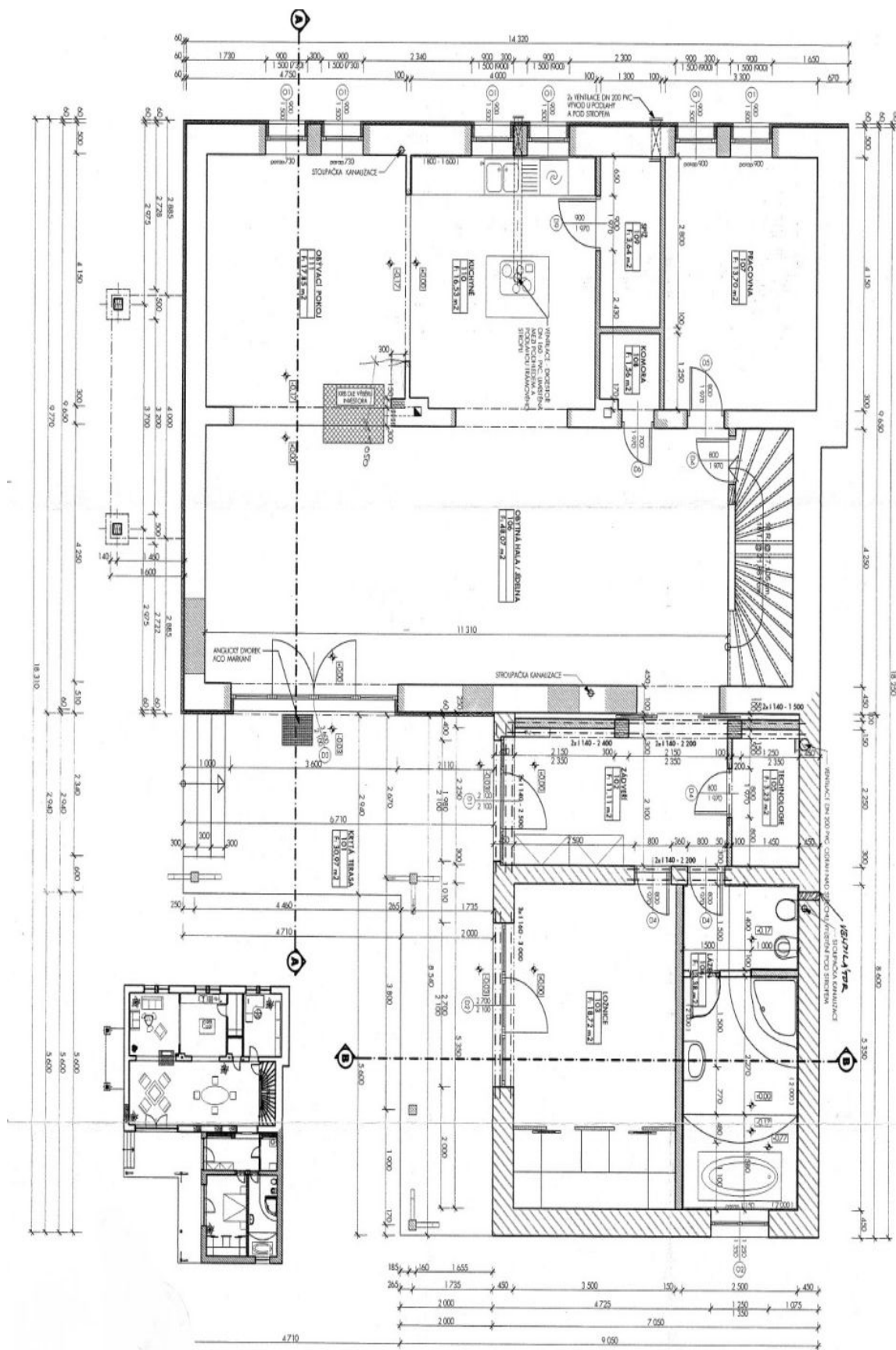




# Farmhouse estate Five-bedroom (6+kk)

Sold

Kladno, Kamenné Žehrovice, Na Spáleníšti





# Farmhouse estate Five-bedroom (6+kk)

Sold

Kladno, Kamenné Žehrovice, Na Spáleníšti

