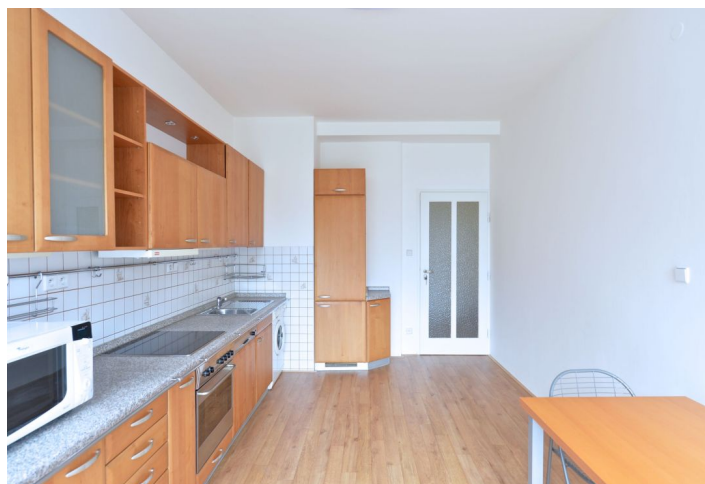




Apartment One-bedroom (2+1)

Rented

81 m², Prague 1, Nové Město, Klimentská





Apartment One-bedroom (2+1)

Rented

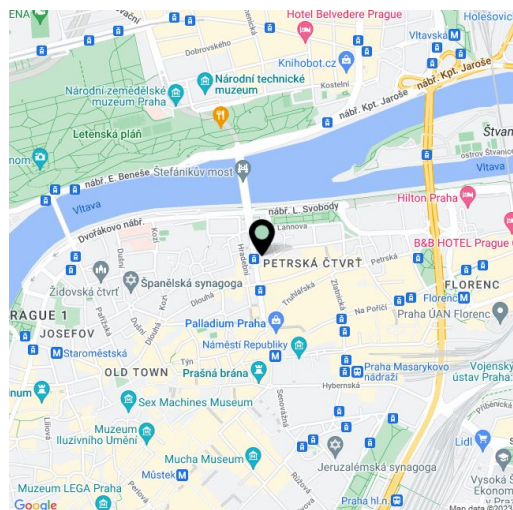
81 m², Prague 1, Nové Město, Klimentská

Total area	86 m ²
Floor area*	81 m ²
Balcony	5 m ²
Parking	-
Cellar	Yes
PENB	G
Reference number	21692
Available from	Immediately

Bright renovated furnished 2-bedroom flat with a balcony overlooking a green park, situated on the second floor of a fully refurbished and well maintained Functionalist building with a lift. Located in the city center just moments from the D1 highway exit and Vltava riverbank with a bike path and Lannova Park, a few minute walk to Florenc metro station and bus terminal, and Náměstí Republiky metro station and Palladium shopping mall. Full amenities within walking distance.

The interior features one bedroom, living room, a fully fitted eat-in kitchen, full bathroom (massage tub and shower), storage room, guest toilet, and a spacious entry hall with built-in storage.

Preserved original details, solid wood parquet floors, outdoor wooden blinds, central heating, washing machine, dishwasher, microwave oven, TV, video entry phone, basement storage unit, chip entry to the building. Parking can be arranged nearby. Monthly deposit for common building charges, water and gas CZK 6,500/month. Electricity will be transferred to the tenant's name.



* Area of the unit according to the Civil Code. The area consists of the sum total area of the entire unit bounded by perimeter walls.