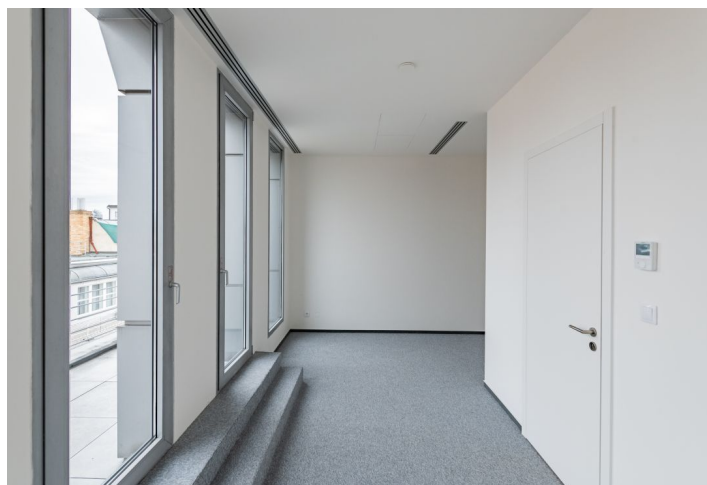
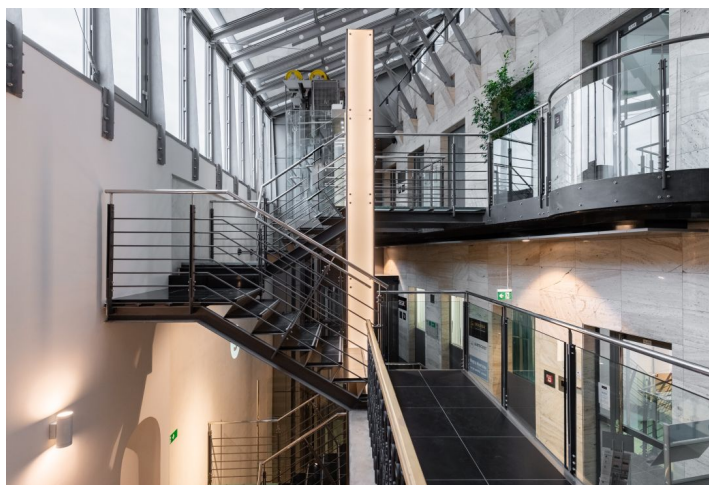
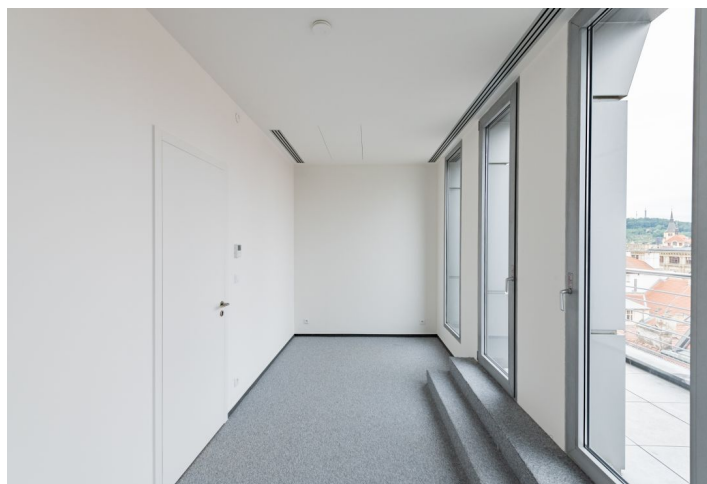




## Office space

Rented

Prague 1, Staré Město, Na příkopě





Prague 1, Staré Město, Na příkopě

Service price	170 CZK monthly per m <sup>2</sup>
Available area	72 m <sup>2</sup>
Cellar	-
Terrace	23 m <sup>2</sup>
Parking	EUR 180 / pp / month
PENB	G
Reference number	21698

Office building situated at the most prestigious business address in Prague offers office space for lease. The building was created by converting and joining two houses from the years 1893 and 1865, and successfully combines classic and modern styles. It was possible to retain the historic facades and a large part of the Classicist inner rooms, combining them with new spaces. The round steel extension and extensive glazing allows for beautiful views of Prague's Old Town. It is the work of SHArchitects in cooperation with the organization for cultural heritage and monument preservation and won the prestigious "Interior of the Year" prize in 1997. Possibility of 1 parking space for every 150 sq. m of leasable area.

**Location:**

Easy access by public transport - the Náměstí Republiky (line B) and Můstek (line A, B) metro stations and tram stops are only a few minutes' walk away.

**Features and Services:**

- Reception
- Atrium
- Modern glass lifts
- Magnetic card access
- Openable windows
- Air conditioning
- Floor duct system and outlets
- Parking

Rental and service charges are listed without VAT. Lessee pays no commission.

