



Apartment Four-bedroom (5+1)

Rented

280 m², Prague 2, Vinohrady, Ibsenova





Apartment Four-bedroom (5+1)

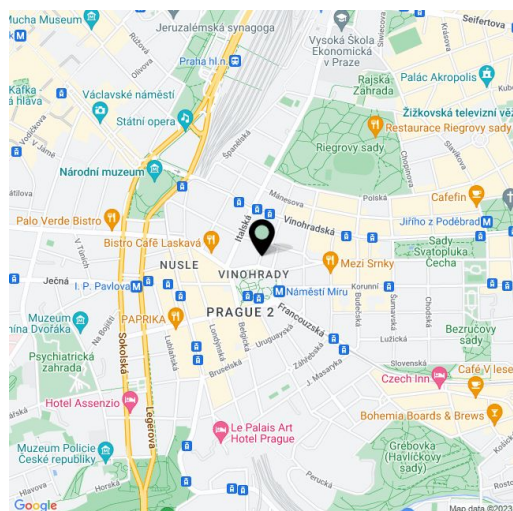
Rented280 m², Prague 2, Vinohrady, Ibsenova

Total area	304 m ²
Floor area*	280 m ²
Terrace	24 m ²
Parking	Underground parking space EUR 200/month.
Cellar	-
PENB	G
Reference number	2176
Available from	Immediately

Exceptional two level partly furnished 3-bedroom 3-bathroom flat with a spectacular terrace and view of the Prague Castle on one side, and pretty views of Namesti Miru on the other. The building is one of the highest level, finely finished and detailed restorations of an Art Nouveau building in Prague, and the quality of the finishes in the apartment are superb. Walk to the center or take a tram or metro just across the road.

Located in the heart of Vinohrady, the flat offers unique rooms, one in the tower, an open kitchen, dining area and quite large living room, 3 bedrooms, 3 bathrooms, guest toilet, storage, laundry, and 3 galleries.

Features include high ceilings, large windows, parquet and stone floors, marble bathrooms, stone kitchen counters, high speed Internet, and alarm. The building has been retrofitted with a lift that goes from the garage to the top with stops on each floor, and has double security at the building entrance. Parking space available at CZK 200 Eur/month. Common building charges and deposit for energies CZK 10,000/month. Despite the photos the apartment is partly furnished. Available from September 2022.



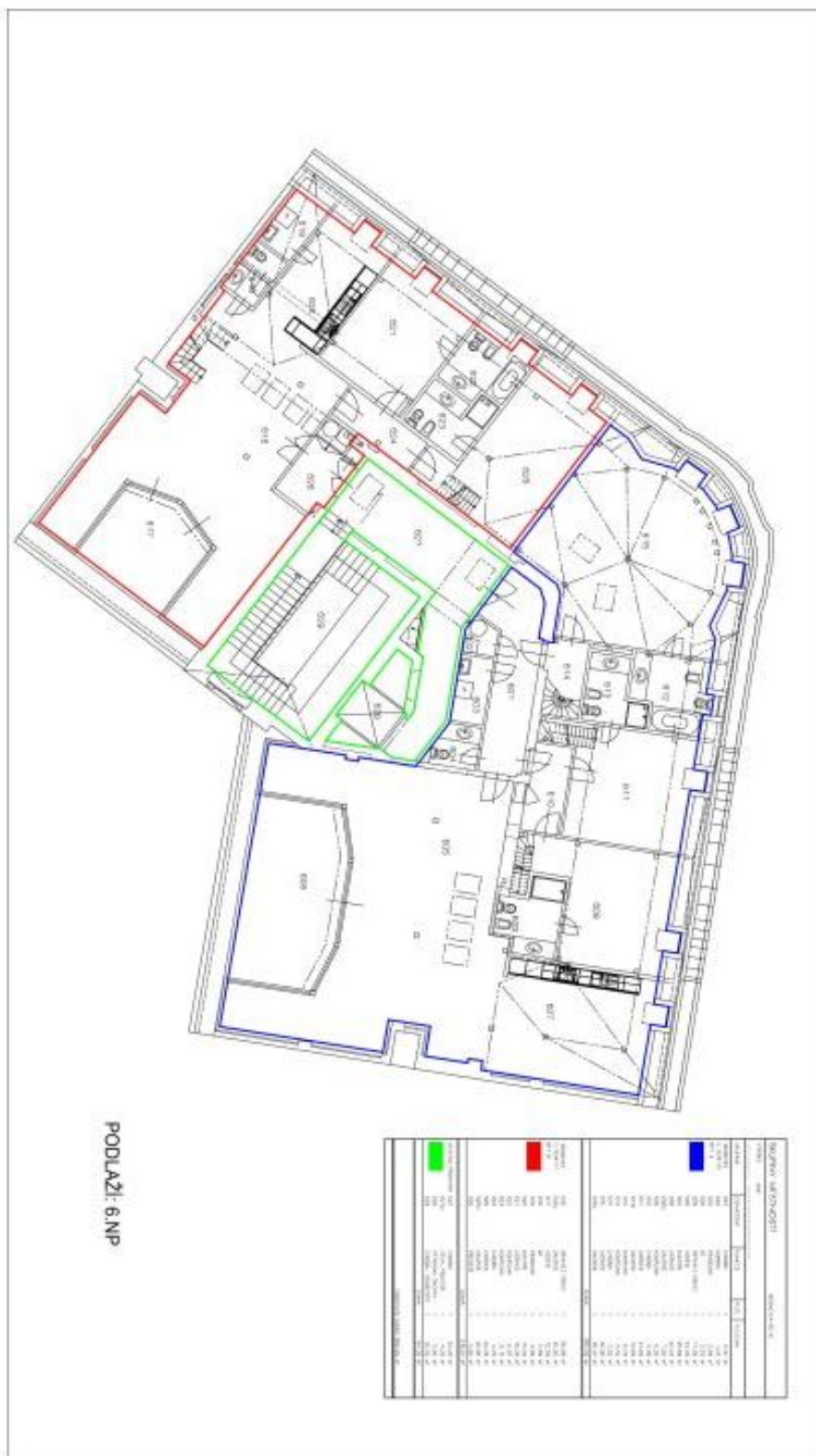
* Area of the unit according to the Civil Code. The area consists of the sum total area of the entire unit bounded by perimeter walls.



Apartment Four-bedroom (5+1)

280 m², Prague 2, Vinohrady, Ibsenova

Rented





Apartment Four-bedroom (5+1)

280 m², Prague 2, Vinohrady, Ibsenova

Rented

