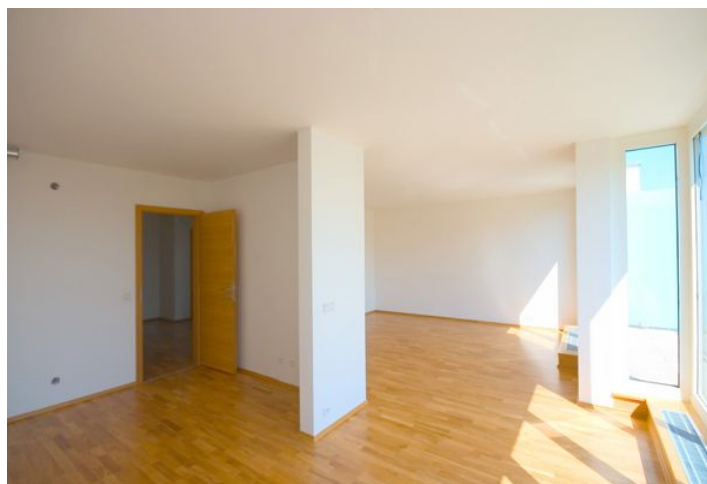
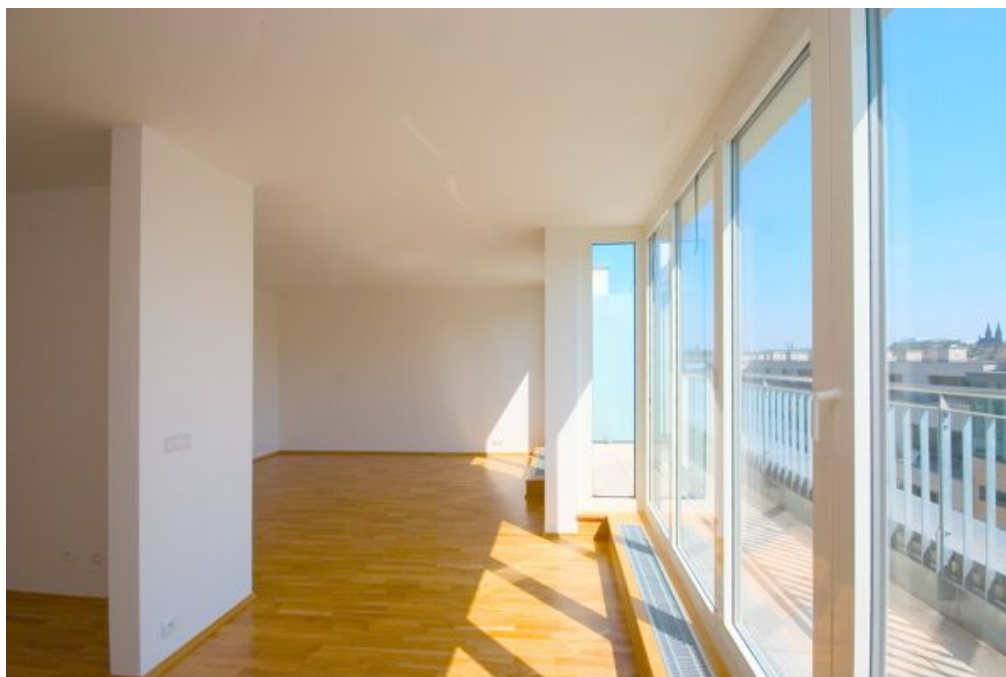




Apartment Two-bedroom (3+kk)

€ 385 512 | CZK 9 701 409

122 m², Prague 5, Smíchov, Anđel





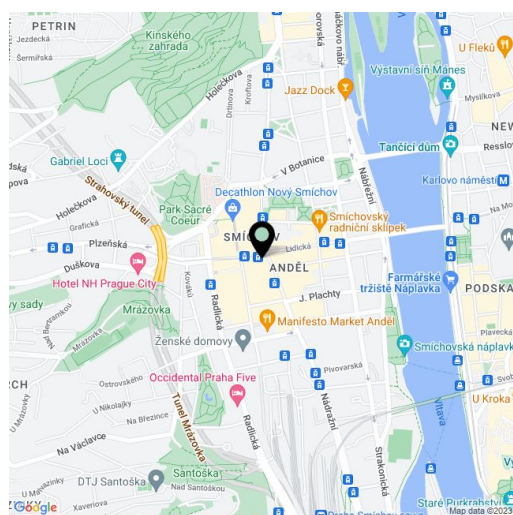
Apartment Two-bedroom (3+kk)

€ 385 512 | CZK 9 701 409

122 m², Prague 5, Smíchov, Andel

Total area	129 m ²
Floor area*	122 m ²
Balcony	7 m ²
Parking	Yes
Cellar	-
PENB	G
Reference number	2181

Spacious apartment on the 5th floor of a new residential project in the heart of the Andel neighborhood, one of Prague's fastest developing city center areas, with new office buildings, design hotels, fancy restaurants, bars and cafes, shopping malls, cinemas, and many more entertainment facilities. A stone's throw from the Anděl metro station with great connections to the city center. Kinského Garden, the Petřín park and the lush green Kampa park are easy to reach on foot. This apartment comprises open plan living, dining and kitchen (kitchen ready) area, 2 bedrooms (one with a balcony), bathroom, additional toilet, walk-in closet, utility room and entry hall. Option to buy a parking space in the underground garage for a price of EUR 25.000. Apartment 122,2 m², balcony 7 m². Dynamic location for city center life! Purchase price is a subject to VAT



* Area of the unit according to the Civil Code. The area consists of the sum total area of the entire unit bounded by perimeter walls.