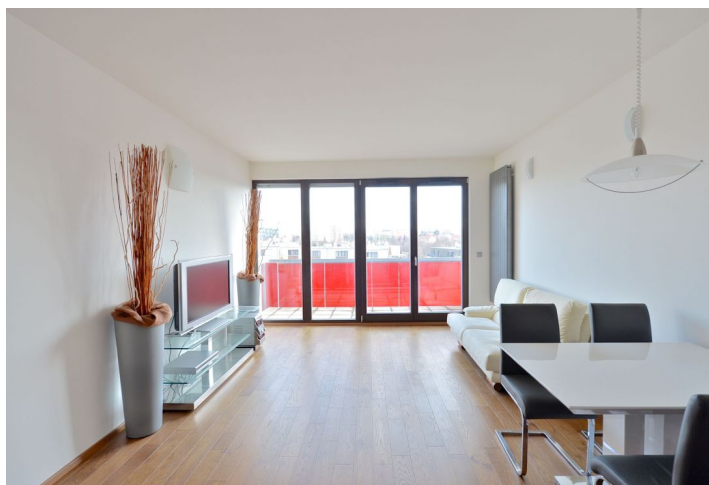




## Apartment One-bedroom (2+kk)

Rented

56 m<sup>2</sup>, Prague 8, Libeň, Lhotákova





## Apartment One-bedroom (2+kk)

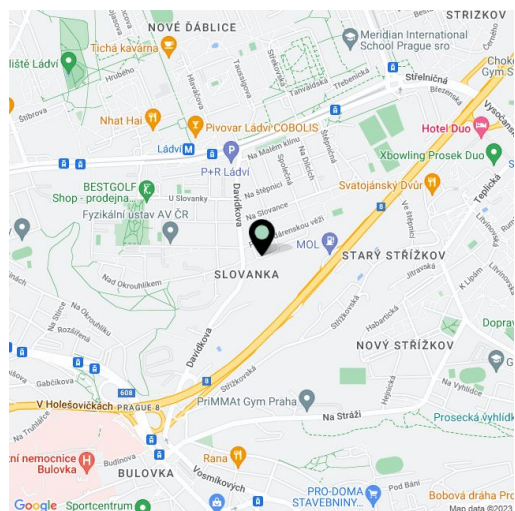
**Rented**56 m<sup>2</sup>, Prague 8, Libeň, Lhotákova

Total area	60 m <sup>2</sup>
Floor area*	56 m <sup>2</sup>
Balcony	4 m <sup>2</sup>
Parking	Garage parking.
Garage	Yes
Cellar	Yes
Service price	Deposit for building charges CZK 3,800/month. Electricity is billed separately.
PENB	G
Reference number	21815
Available from	Immediately

**Benefiting from far-reaching views, this furnished modern apartment is on the third floor of a residential project with underground parking. Located in a quiet Prague 8 area with quick access to the city center, within easy reach of public amenities incl. a swimming pool, just a 5-minute walk to the Ládví metro station (line C).**

The apartment includes a living room with a fully fitted open plan kitchen, a dining area, and access to the balcony, one bedroom, a walk-in closet, a shower bathroom with a bidet and toilet, a pantry, and an open entry hall.

Basic furniture, wooden floors, tiles, security entry door, French windows, new kitchen, dishwasher, microwave oven, TV, lift, basement storage unit, pram and bike storage in the building. Possible to rent a garage parking space at CZK 1,500/month.



\* Area of the unit according to the Civil Code. The area consists of the sum total area of the entire unit bounded by perimeter walls.