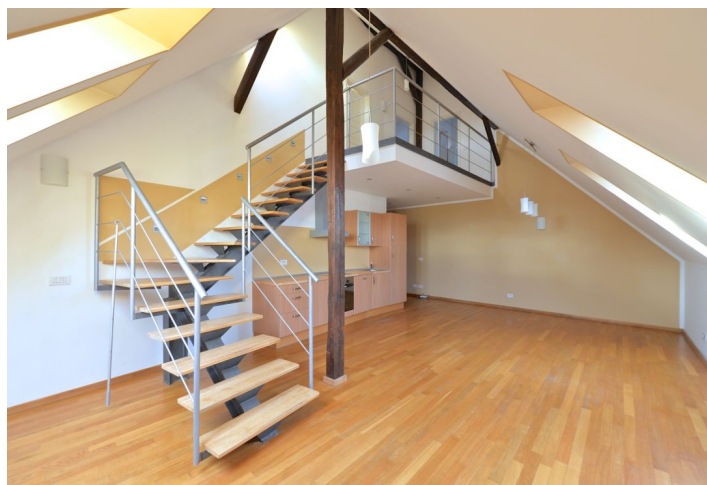
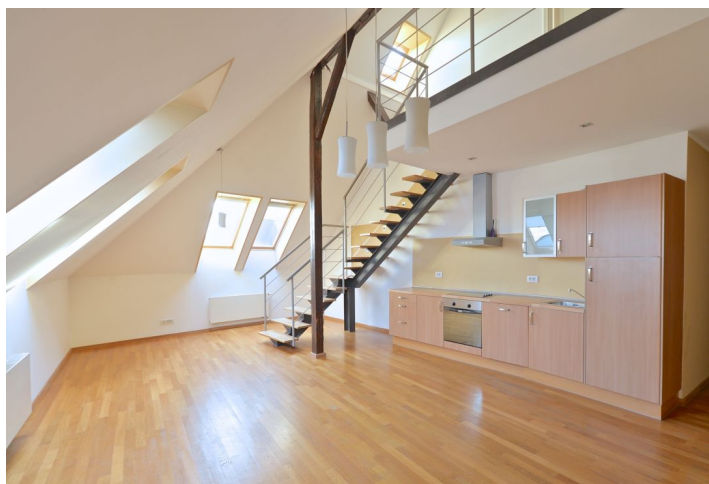




## Apartment Two-bedroom (3+kk)

Sold

101 m<sup>2</sup>, Praha 10, Vršovice, Slovinská





## Apartment Two-bedroom (3+kk)

**Sold**101 m<sup>2</sup>, Praha 10, Vršovice, Slovinská

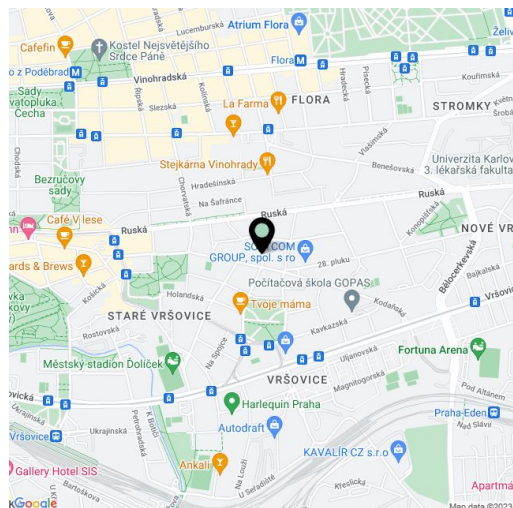
Total area	116 m <sup>2</sup>
Floor area*	101 m <sup>2</sup>
Terrace	15 m <sup>2</sup>
Parking	-
Cellar	-
Service price	2 400 CZK monthly
PENB	G
Reference number	21874

**Bright split-level attic flat with terrace on the 5th and 6th floors of a lovely neo-Gothic style building, close to convenient tram stops and the Náměstí Svatopluka Čecha square.**

The lower floor consists of a living room with kitchen, separate toilet, walk-in closet, utility room, and a hallway. The upper floor, which is accessible by stairs from the living room, features a gallery, 2 bedrooms (one of them with a west-facing terrace), and bathroom with bathtub, toilet and bidet. Equipped with **hardwood floors**, ceramic tiles, wooden skylights, combined gas boiler, fully fitted kitchen. **The house has been renovated in recent years**, including the installation of a **new elevator**. Painting of the facade and common area is scheduled for 2016.

Location with full amenities and excellent access to public transportation, only few minutes from the center. In the vicinity there are parks, playgrounds, kindergartens and schools, while the Eden shopping mall is a 10-minute walk away.

Interior 101 m<sup>2</sup>, terrace 15 m<sup>2</sup>.



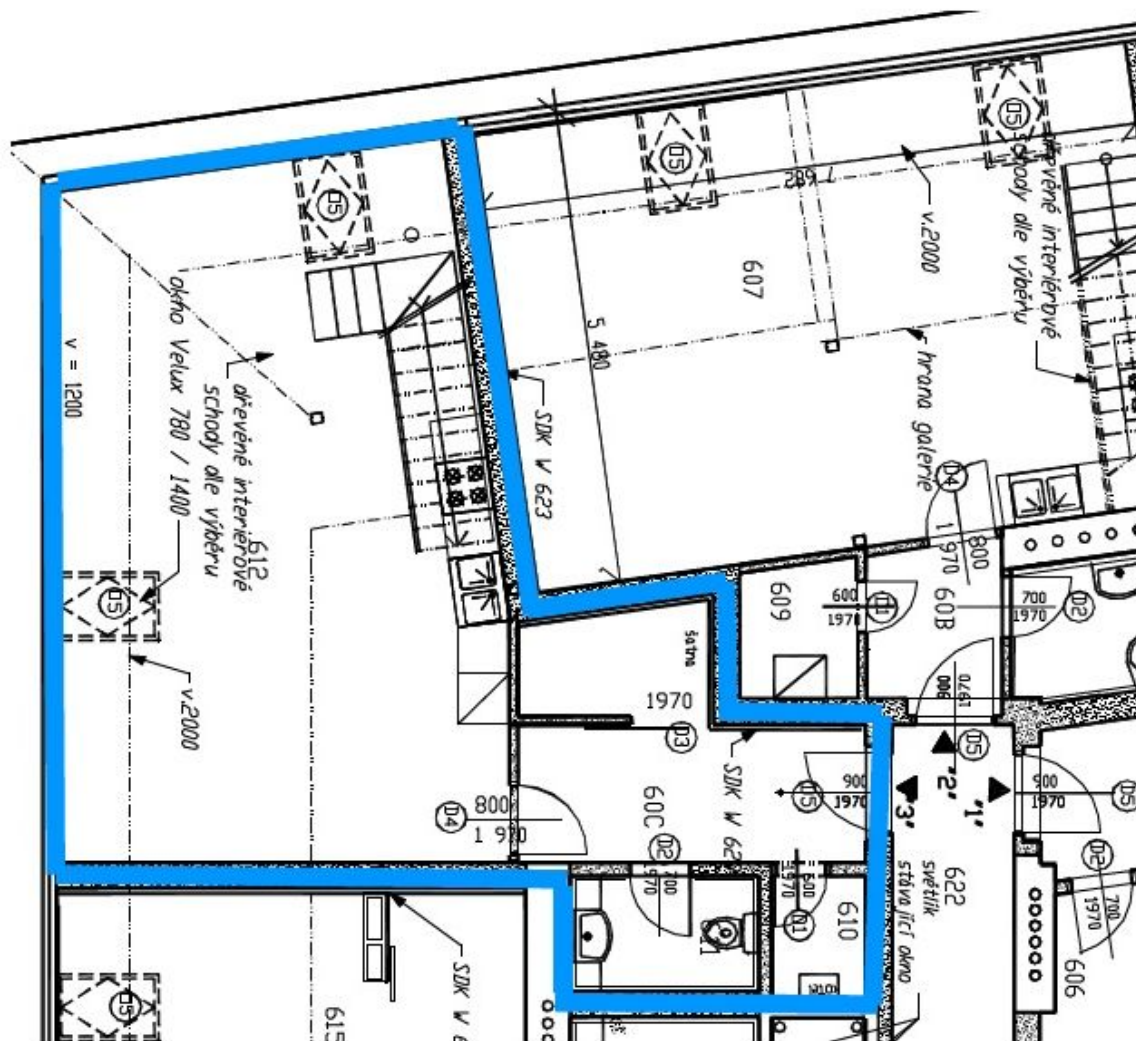
\* Area of the unit according to the Civil Code. The area consists of the sum total area of the entire unit bounded by perimeter walls.



## Apartment Two-bedroom (3+kk)

101 m<sup>2</sup>, Praha 10, Vršovice, Slovinská

Sold

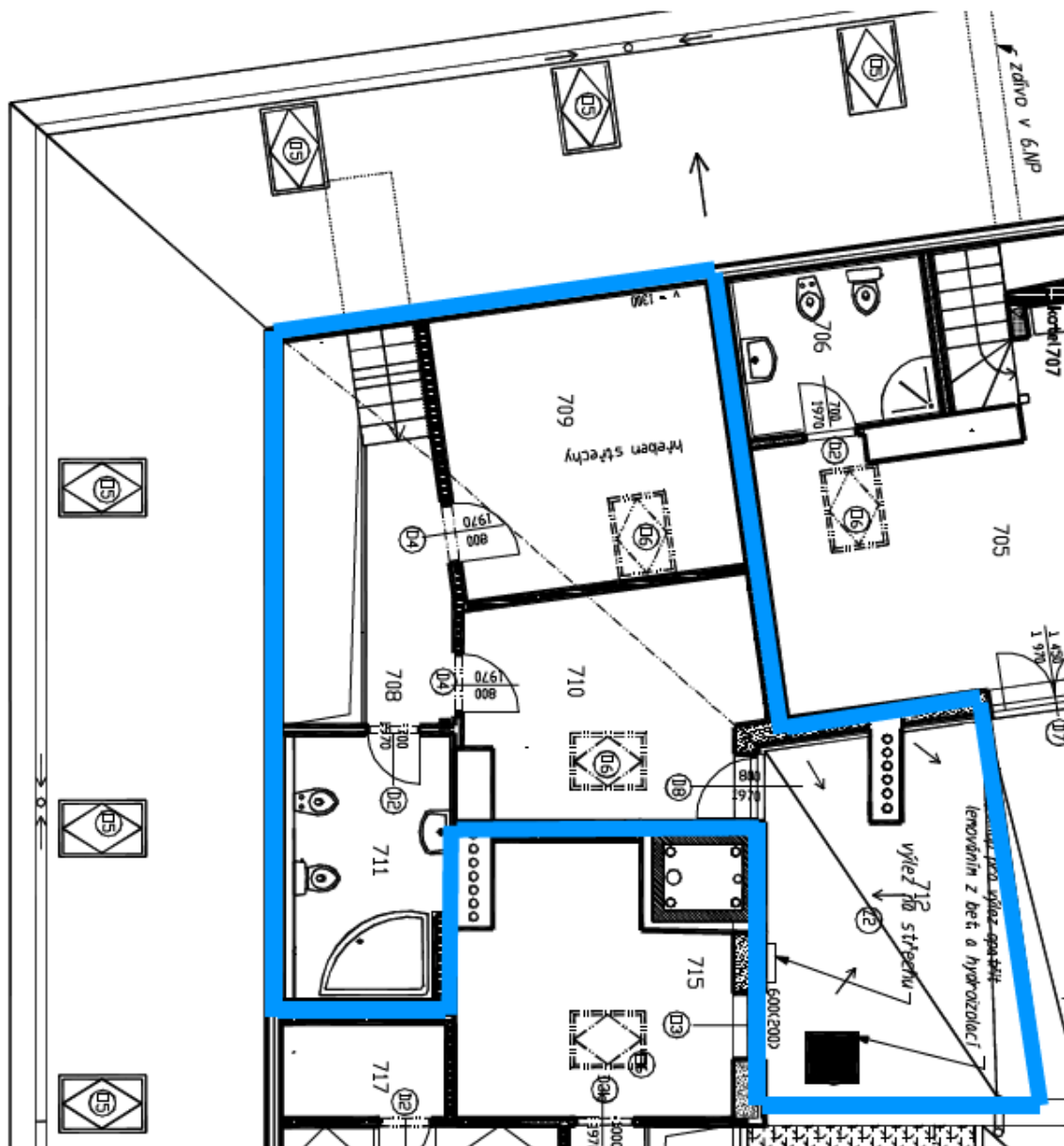




## Apartment Two-bedroom (3+kk)

101 m<sup>2</sup>, Praha 10, Vršovice, Slovinská

Sold





## Apartment Two-bedroom (3+kk)

101 m<sup>2</sup>, Praha 10, Vršovice, Slovinská

Sold

<b>BYT 6/3 = 5485 6NP + 4662 7NP = 101,47 m<sup>2</sup> + terasa 1668 m<sup>2</sup></b>						
610	kotel	1,73	keram. dlažba	štuková omítka, SDK	pohled SDK v. 2300	
611	WC	2,91	keram. dlažba s hydroizolací	štuková omítka, SDK	ker. obkl. v. 2000 pohled SDK v. 2300	
612	hala + jídelna + kuch. kout	43,71	parkety	štuková omítka, SDK	ker. obkl. 800-1400 za kuch. linkou	
60C	předstín	6,50	parkety	štuková omítka, SDK	pohled SDK v. 2300	

**Apartment Two-bedroom (3+kk)**101 m<sup>2</sup>, Praha 10, Vršovice, Slovinská**Sold**

<b>BYT 6/3 = 5485 6NP + 4662 7NP = 10147 m<sup>2</sup> + terasa 1668 m<sup>2</sup></b>						
708	chodba	8,14	keram. dlažba	štuková omítka, SDK		
709	pokoje	15,00	keram. dlažba s hydroizolací	štuková omítka, SDK	ker. okladi v. 2000	pohled SDK v. 2300
710	pokoje	12,42	parkety	štuková omítka, SDK		
711	koupelna	8,27	keram. dlažba	štuková omítka, SDK	ker. okladi v. 2000	pohled SDK v. 2300
712	terasa	15,25	keram. dlažba s hydroizolací	štuková omítka, SDK		